

MACON valves and accessories

Model 64512 Lower valve for tank level gauge



Specifications

Operating pressure: PN6

Temperature: from 0°C to +80°C

Material: 316 stainless steel

EPDM and Silicone gaskets

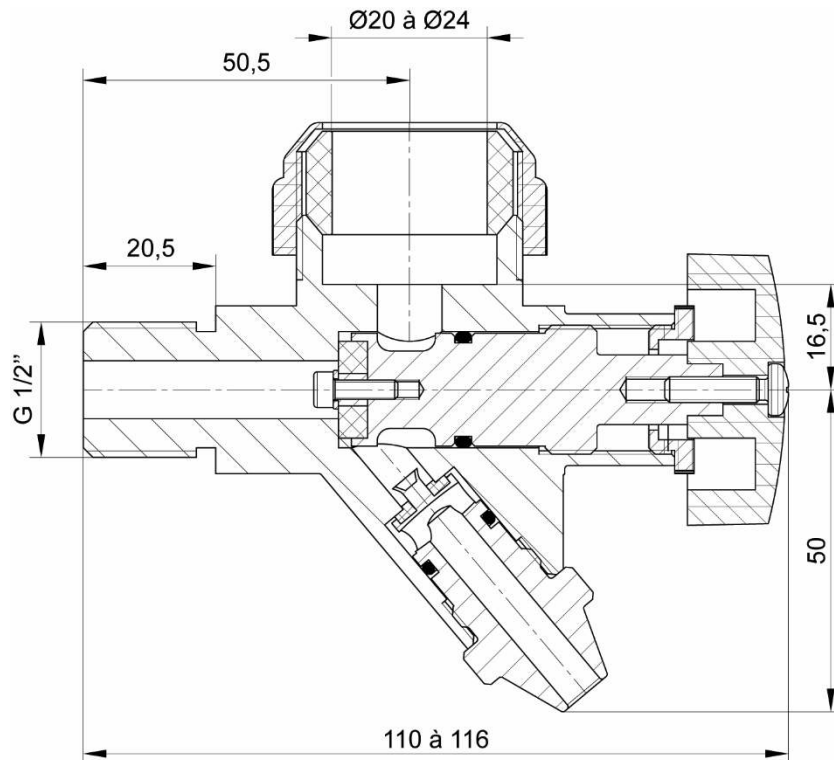
Connection: BSPP or oval flange



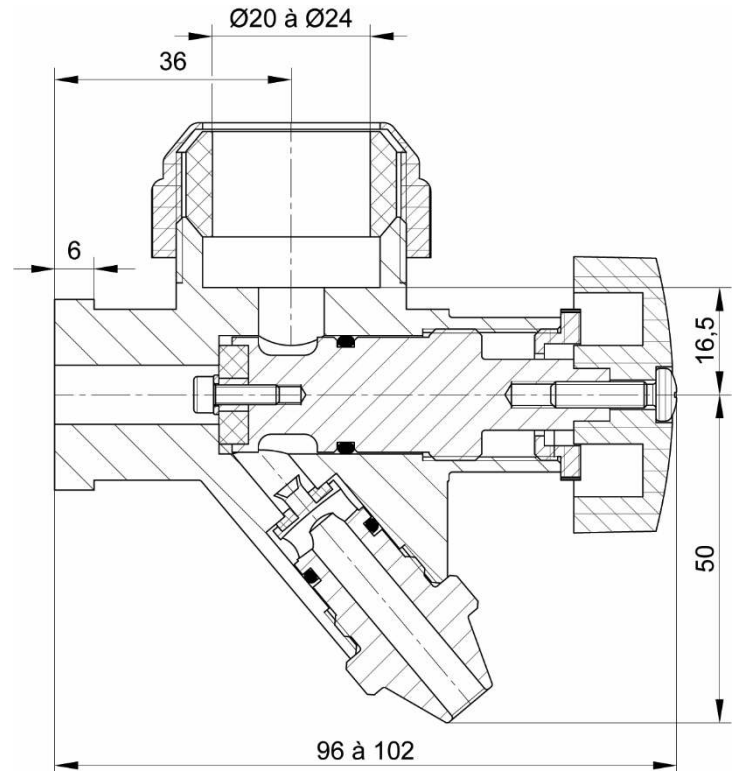
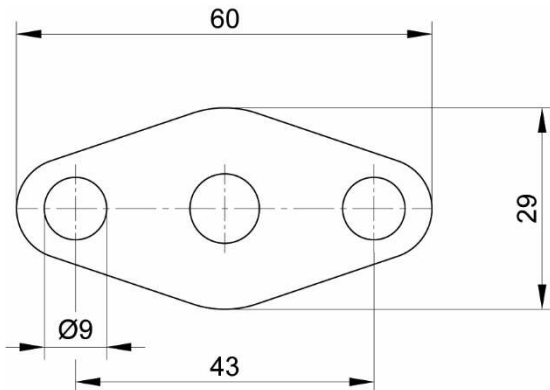
Béné Inox – 11 chemin de la Pierre Blanche – 69800 SAINT-PRIEST – S.A.S with 240 000 € share capital – SIREN N° 311 810 287 Tel. N°: +33 (0)4 78 90 48 22 – Fax N°: +33 (0)4 78 90 69 59 – www.bene-inox.com – bene@bene-inox.com

Technical information, illustrations and photographs are provided for information only, they are not contractual. Some may vary according to the tolerances accepted in the profession and the applicable standards. All instructions for use, disassembly and maintenance are recommendations only. These could also vary depending on product usage conditions, its installation environment and purchaser requirements – of which the purchaser alone is responsible for their definition.

Male thread tank connection



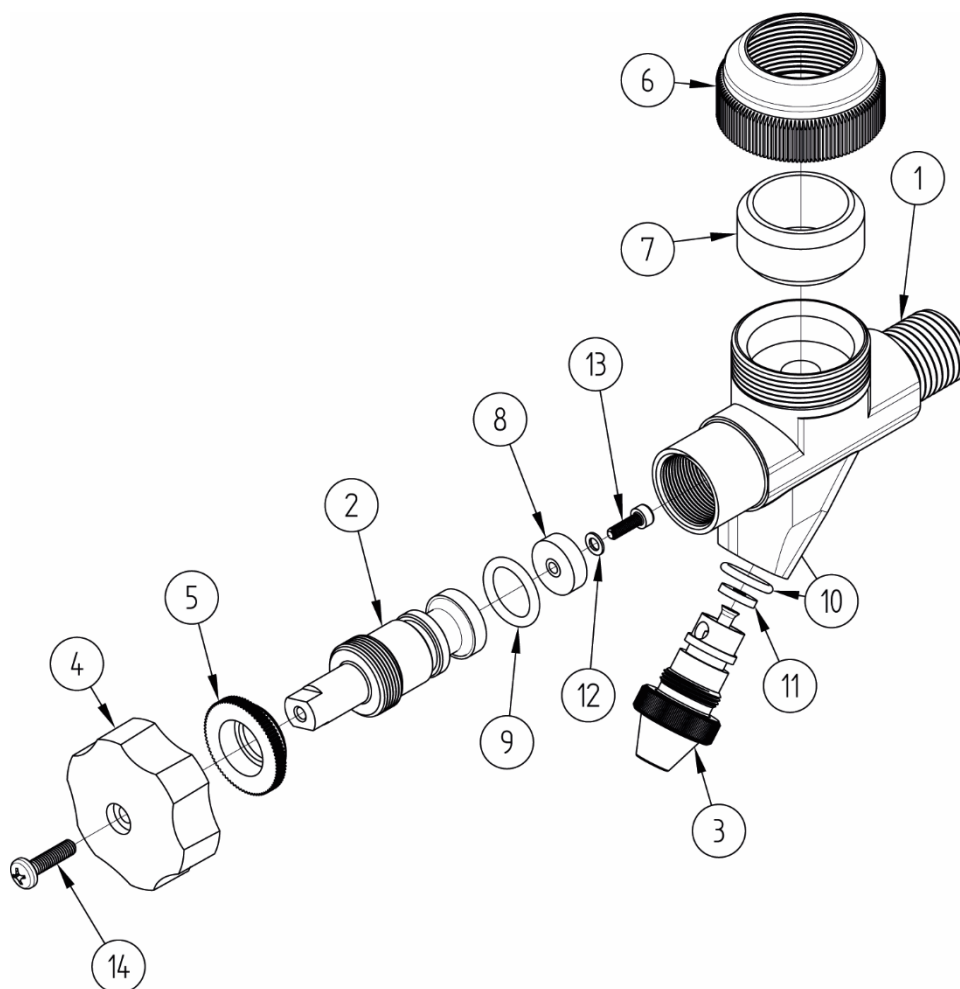
Oval flange tank connection



Version	Tank connection	Part number
With plastic clamping ring	BSPP G 1/2" male thread	464512-1220
With stainless steel clamping ring	BSPP G 1/2" male thread	464512-1220IN
All stainless steel	BSPP G 1/2" male thread	464512-1220TI
With plastic clamping ring	Oval flange	464512-BR
With stainless steel clamping ring	Oval flange	464512-BRIN
All stainless steel	Oval flange	464512-BRTI

Béné Inox – 11 chemin de la Pierre Blanche – 69800 SAINT-PIERRE – S.A.S with 240 000 € share capital – SIREN N° 311 810 287 Tel. N°: +33 (0)4 78 90 48 22 – Fax N°: +33 (0)4 78 90 69 59 – www.bene-inox.com – bene@bene-inox.com

Technical information, illustrations and photographs are provided for information only, they are not contractual. Some may vary according to the tolerances accepted in the profession and the applicable standards. All instructions for use, disassembly and maintenance are recommendations only. These could also vary depending on product usage conditions, its installation environment and purchaser requirements – of which the purchaser alone is responsible for their definition.



N°	Part Name	Material
1	BODY	AISI 316
2	VALVE SHAFT	AISI 316
3	BLEED SPOUT	AISI 316
4	OPERATING WHEEL	NYLON / 304 STAINLESS STEEL
5	KNURLED WASHER	NYLON / 304 STAINLESS STEEL
6	TUBE CLAMPING RING	NYLON / 304 STAINLESS STEEL
7	TUBE CLAMPING GASKET	SILICONE
8	FLAT GASKET (SHAFT/BODY)	EPDM
9	GASKET (SHAFT/BODY)	EPDM
10	GASKET (SPOUT/BODY)	EPDM
11	FLAT GASKET (SPOUT/BODY)	EPDM
12	WASHER	AISI 304
13	CHC SCREW	AISI 304
14	ROUND HEAD SCREW	AISI 304

Use

When the lower valve for the tank level gauge is assembled onto the lower part of a ruler with graduations it will display the level of product contained inside a tank.

Loosen the operating wheel **4** to align the gauge with the level of the tank.

You must tighten this wheel after you have aligned the gauge.

If you need to bleed or empty the fluid present in the gauge, first partially loosen the bleed spout **3**, then open the operating wheel **4**.

You must tighten both of these parts again afterwards.

You must use a flat gasket (for BSP ISO 228-1 threading) to make sure the threaded connections are correctly sealed.

Accessories

- Replacement tube clamping gasket(**7**) - Silicone: **964903-20**
- Replacement tube clamping gasket(**7**) - FKM BNIC: **964904-20**
- Replacement tube clamping ring (**6**) - INOX: **264900-1**
- Replacement operating wheel (**4**) - INOX: **264901-1**
- Selection of replacement gaskets (excluding Ø20 tube clamping gasket) (**8**, **9**, **10**, **11**) - EPDM: **964512-12**

Oval flange connection accessories:

- FKM oval flange gas ket: **964950-BR**
- FKM BNIC oval flange gasket: **964951-BR**
- Oval flange - smooth holes: **264952-BR**

Standards

- Connection: the BSPP male thread of this part is in accordance with ISO 228-1
- This part complies with EC Directive 1935/2004
- FDA

Operating principle

