

MACON valves and accessories

Model 64511 Upper mounting part for tank level gauge



Specifications

Operating pressure: PN6

Temperature: from 0°C to +80°C

Material: 316 stainless steel

EPDM and Silicone gaskets

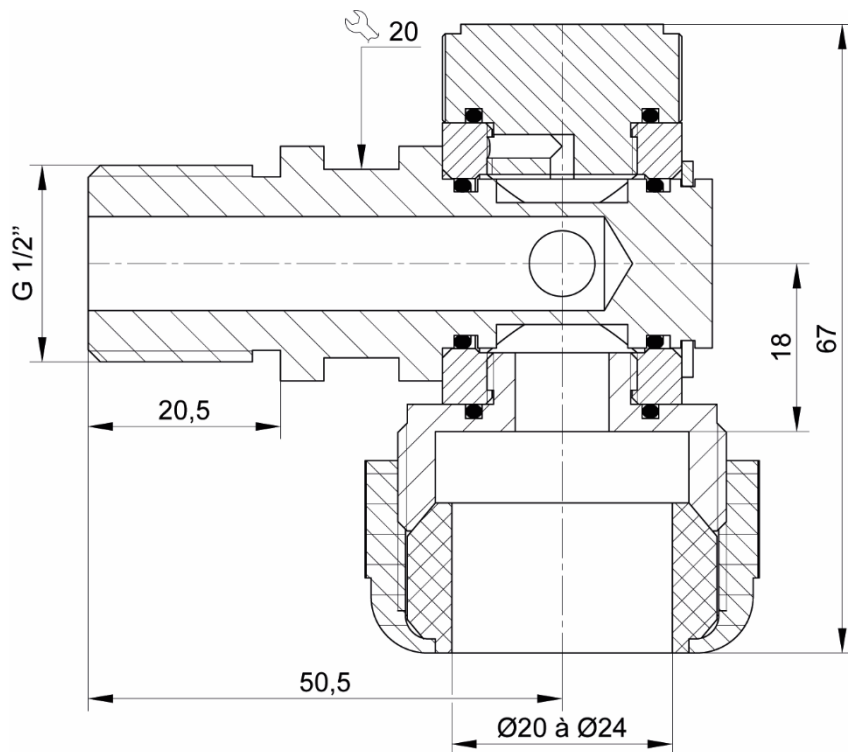
Connection: BSPP or oval flange



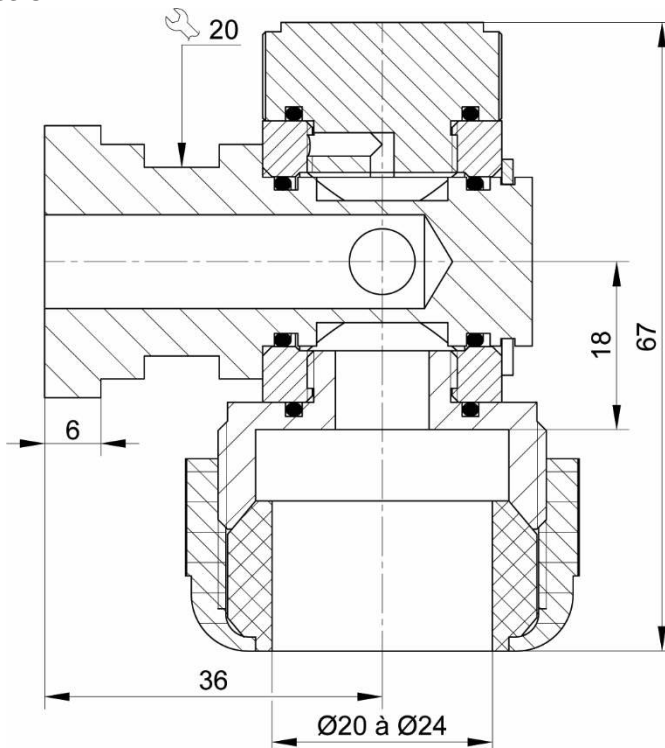
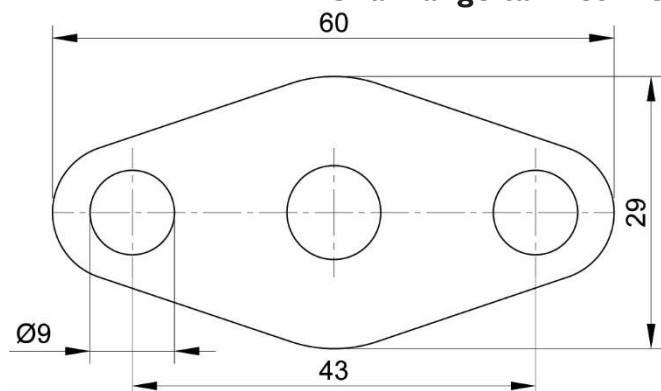
Béné Inox – 11 chemin de la Pierre Blanche – 69800 SAINT-PRIEST – S.A.S with 240 000 € share capital – SIREN N° 311 810 287 Tel. N°: +33 (0)4 78 90 48 22 – Fax N°: +33 (0)4 78 90 69 59 – www.bene-inox.com – bene@bene-inox.com

Technical information, illustrations and photographs are provided for information only, they are not contractual. Some may vary according to the tolerances accepted in the profession and the applicable standards. All instructions for use, disassembly and maintenance are recommendations only. These could also vary depending on product usage conditions, its installation environment and purchaser requirements – of which the purchaser alone is responsible for their definition.

Male thread tank connection



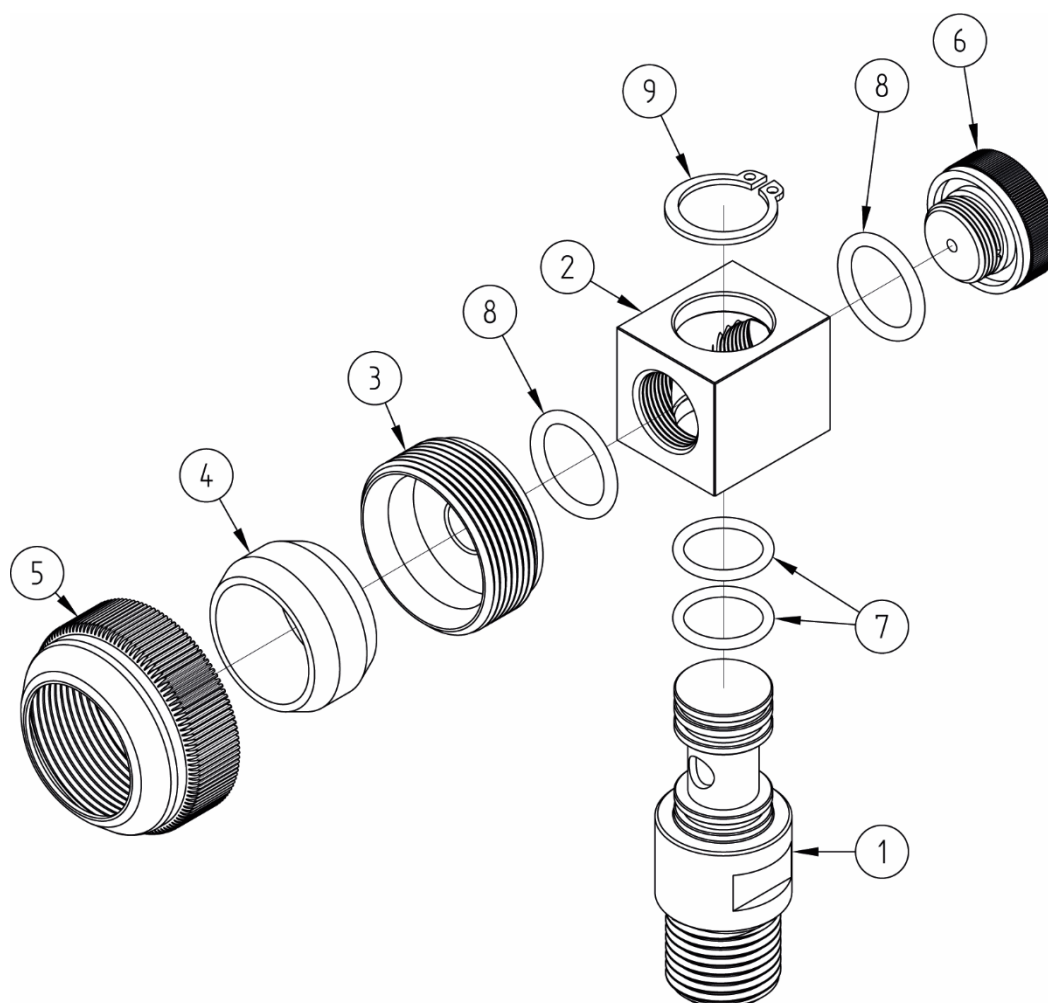
Oval flange tank connection



| Version | Tank connection | Part number |
|------------------------------------|-------------------------|---------------|
| With plastic clamping ring | BSPP G 1/2" male thread | 464511-1220 |
| With stainless steel clamping ring | BSPP G 1/2" male thread | 464511-1220IN |
| With plastic clamping ring | Oval flange | 464511-BR |
| With stainless steel clamping ring | Oval flange | 464511-BRIN |

Béné Inox – 11 chemin de la Pierre Blanche – 69800 SAINT-PIERRE – S.A.S with 240 000 € share capital – SIREN N° 311 810 287 Tel. N°: +33 (0)4 78 90 48 22 – Fax N°: +33 (0)4 78 90 69 59 – www.bene-inox.com – bene@bene-inox.com

Technical information, illustrations and photographs are provided for information only, they are not contractual. Some may vary according to the tolerances accepted in the profession and the applicable standards. All instructions for use, disassembly and maintenance are recommendations only. These could also vary depending on product usage conditions, its installation environment and purchaser requirements – of which the purchaser alone is responsible for their definition.



| N° | Part Name | Material | Quantity |
|----|--------------------------|------------------------------|----------|
| 1 | THREADED CONNECTING ROD | 316 STAINLESS STEEL | 1 |
| 2 | BODY | 316 STAINLESS STEEL | 1 |
| 3 | CONNECTOR | 316 STAINLESS STEEL | 1 |
| 4 | TUBE CLAMPING GASKET | SILICONE | 1 |
| 5 | TUBE CLAMPING RING | NY LON / 304 STAINLESS STEEL | 1 |
| 6 | BLEED PLUG | 316 STAINLESS STEEL | 1 |
| 7 | GASKET (ROD/BODY) | EPDM | 2 |
| 8 | GASKET (BODY /CONNECTOR) | EPDM | 2 |
| 9 | CIRCLIP | STAINLESS STEEL | 1 |

Use

When the upper mounting part for the tank level gauge is assembled onto the top of a ruler with graduations it will display the level of product contained inside a tank.

In some cases, when a tank has no air entry point and it operates in a closed circuit, fluid could become trapped within the level gauge and you will not be able to read the level correctly. If you loosen the bleed plug 6, air will enter into the gauge and bring it back to the level of the tank.

You must tighten the plug once the correct level is obtained, otherwise if the plug is loose it could leak.

Accessories

- Replacement tube clamping gasket(4) - Silicone: 964903-20
- Replacement tube clamping gasket(4) - FKM BNIC: 964904-20
- Replacement tube clamping ring (5) - Stainless Steel: 264900-1

Oval flange connection accessories:

- FKM oval flange gasket: 964950-BR
- FKM BNIC oval flange gasket: 964951-BR
- Oval flange - smooth holes: 264952-BR

Standards

- Connection: the BSPP male thread of this part is in accordance with ISO 228-1
- This part complies with EC Directive 1935/2004
- FDA

Operating principle

