

Butterfly valve accessories

Model 61523 Electric actuator UMA with fixing bracket



Specifications

Dimensions: For agri-foodstuff butterfly valves
DN25 to DN100 (1" to 4")

Supply voltage: 230VAC / 24VDC or VAC

Ambient temperature: -10C to +50C

Actuator torque:

- DN25 to DN76 valves: 35 Nm
- DN80 to DN100 valves: 100 Nm

Material: Plastic actuator

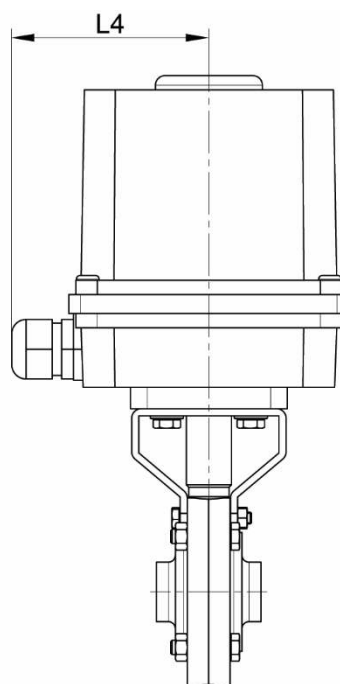
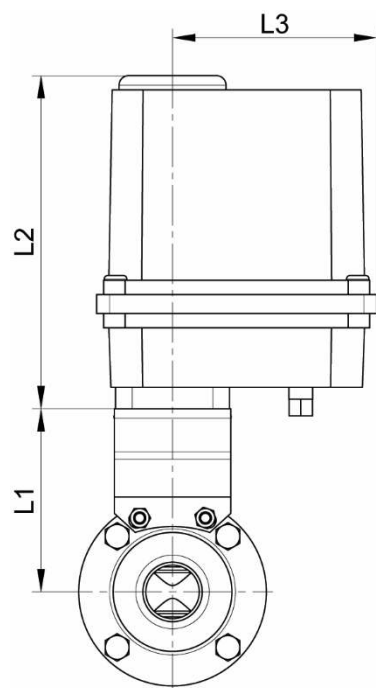
Bracket and coupler in 304 stainless steel

DN25 to DN76 valves

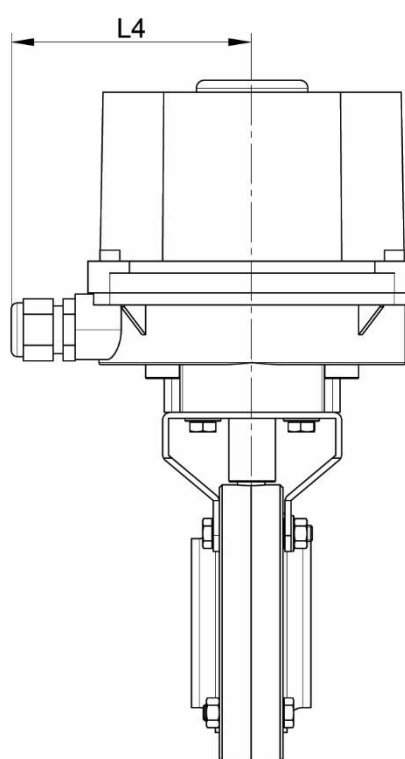
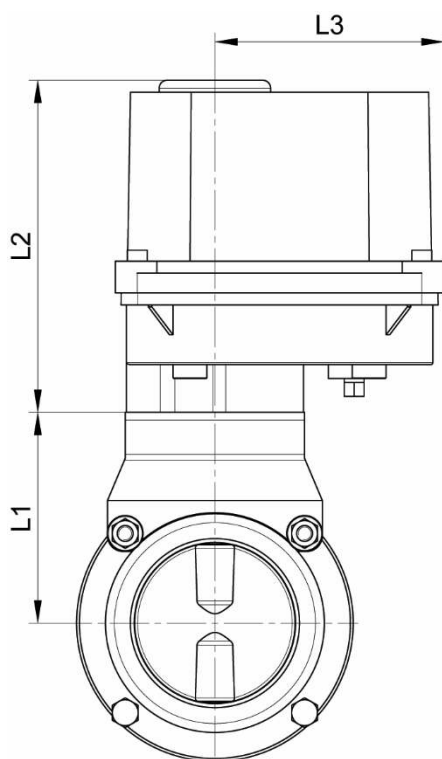
Range

61

SMS STANDARD



DN80 to DN100 valves



Valve DN (mm)	Valve standard	L1 (mm)	L2 (mm)	L3 (mm)	L4 (mm)	Valve shaft (mm)
25	SMS / DIN / CLAMP	77	144	86	85	8 (f lat side)
32 / 38 / 40	SMS / DIN / CLAMP / MACON	84	144	86	85	8 (f lat side)
50 / 51	SMS / DIN / CLAMP / MACON	90	144	86	85	8 (f lat side)
60 / 63	SMS / MACON	94	144	86	85	8 (f lat side)
65 / 70 / 76	SMS / DIN / CLAMP / MACON	100	144	86	85	8 (f lat side)
80	DIN	106	167	115	125	9.5 x 9.5 (square)
100 / 104	SMS / DIN	115	167	115	125	9.5 x 9.5 (square)

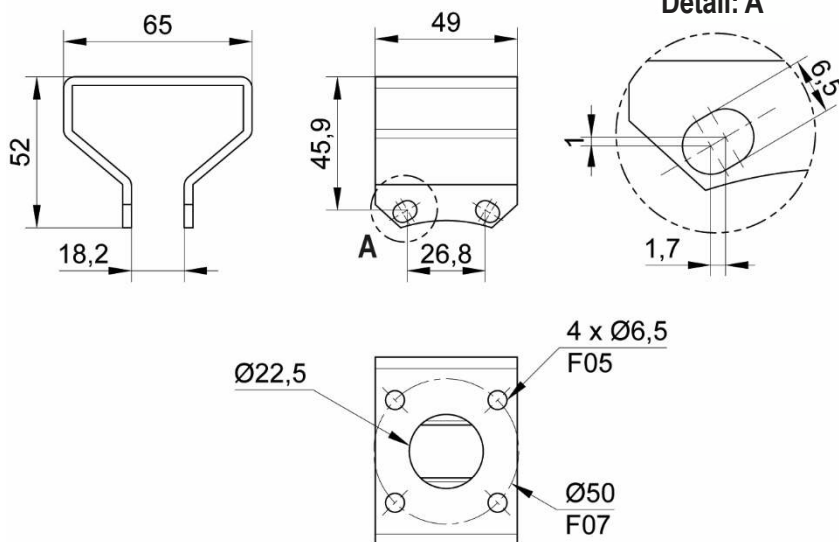
Béné Inox – 11 chemin de la Pierre Blanche – 69800 SAINT-PRIEST – S.A.S with 240 000 € share capital – SIREN N° 311

810 287 Tel. N°: +33 (0)4 78 90 48 22 – Fax N°: +33 (0)4 78 90 69 59 – www.bene-inox.com – bene@bene-inox.com

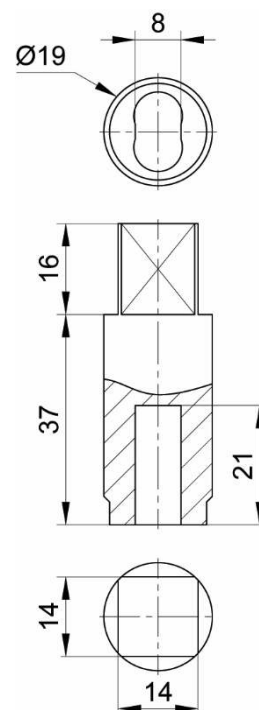
Technical information, illustrations and photographs are provided for information only, they are not contractual. Some may vary according to the tolerances accepted in the profession and the applicable standards. All instructions for use, disassembly and maintenance are recommendations only. These could also vary depending on product usage conditions, its installation environment and purchaser requirements – of which the purchaser alone is responsible for their definition.

DN25 to DN76 valves

Fixing bracket

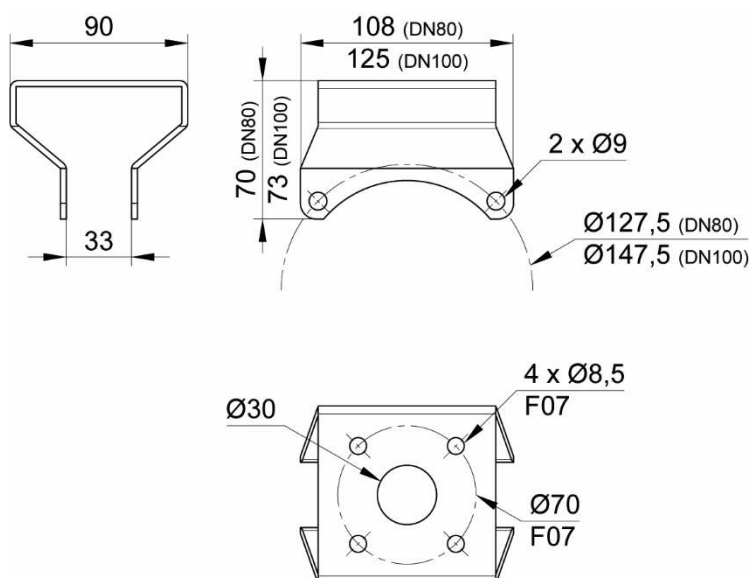


Coupler

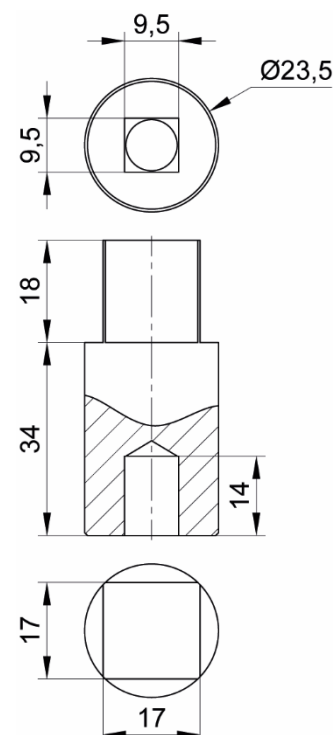


DN80 and DN100 valves

Fixing bracket



Coupler

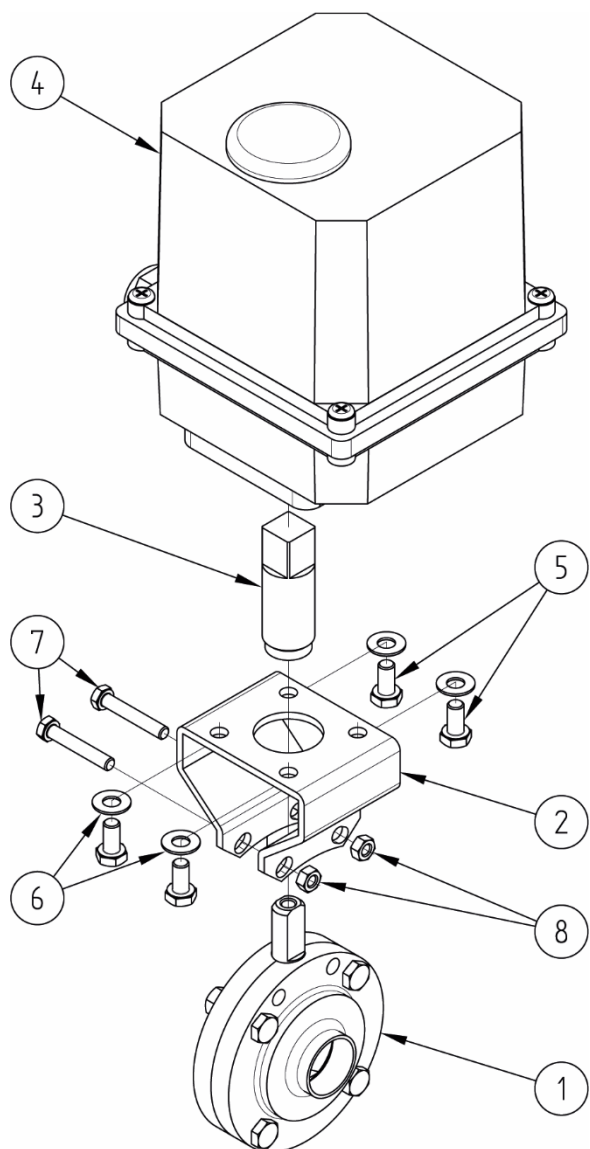


Valve DN (mm)	Valve NB (inches)	Power supply	Weight without valve (kg)	Part number
25 to 76	1" to 3"	230 VAC 50/60 Hz	1.88	961523-2576A
25 to 76	1" to 3"	24 VAC 50/60 Hz	1.88	961523-2576B
25 to 76	1" to 3"	24 VDC	1.88	961523-2576C
80	3"1/2	230 VAC 50/60 Hz	4.84	961523-80A
100 and 104	4"	230 VAC 50/60 Hz	4.88	961523-104A

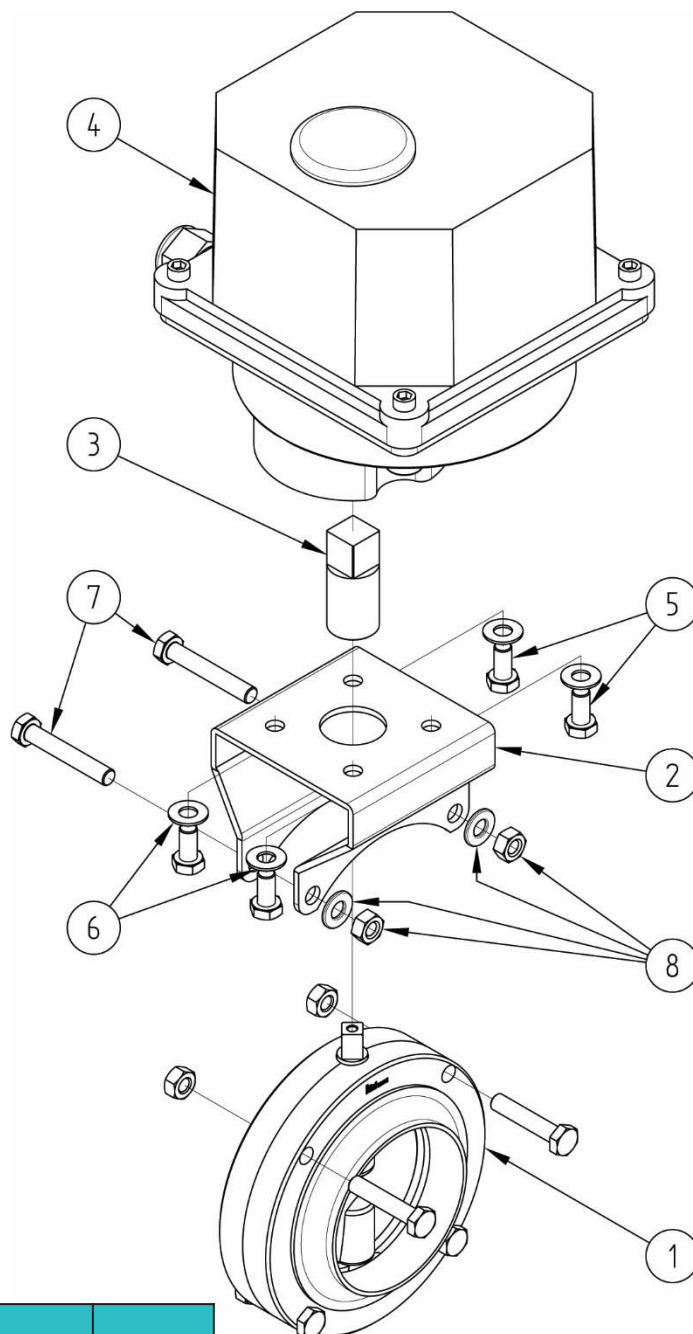
Béné Inox – 11 chemin de la Pierre Blanche – 69800 SAINT-PRIEST – S.A.S with 240 000 € share capital – SIREN N° 311 810 287 Tel. N°: +33 (0)4 78 90 48 22 – Fax N°: +33 (0)4 78 90 69 59 – www.bene-inox.com – bene@bene-inox.com

Technical information, illustrations and photographs are provided for information only, they are not contractual. Some may vary according to the tolerances accepted in the profession and the applicable standards. All instructions for use, disassembly and maintenance are recommendations only. These could also vary depending on product usage conditions, its installation environment and purchaser requirements – of which the purchaser alone is responsible for their definition.

DN25 to DN76 valves



DN80 and DN100 valves



N°	Part Name	Material	Quantity
1	BUTTERFLY VALVE	STAINLESS STEEL / ELASTOMERE	1
2	FIXING BRACKET	304 STAINLESS STEEL	1
3	COUPLER	304 STAINLESS STEEL	1
4	ACTUATOR	PLASTIC	1
5	FIXING SCREW (BRACKET / ACTUATOR)	A2 STAINLESS STEEL	4
6	WASHER (BRACKET / ACTUATOR)	A2 STAINLESS STEEL	4
7	FIXING BOLT (BRACKET / VALVE)	A2 STAINLESS STEEL	2
8	NUTS (BRACKET / VALVE)	A2 STAINLESS STEEL	2

Béné Inox – 11 chemin de la Pierre Blanche – 69800 SAINT-PRIEST – S.A.S with 240 000 € share capital – SIREN N° 311

810 287 Tel. N°: +33 (0)4 78 90 48 22 – Fax N°: +33 (0)4 78 90 69 59 – www.bene-inox.com – bene@bene-inox.com

Technical information, illustrations and photographs are provided for information only, they are not contractual. Some may vary according to the tolerances accepted in the profession and the applicable standards. All instructions for use, disassembly and maintenance are recommendations only. These could also vary depending on product usage conditions, its installation environment and purchaser requirements – of which the purchaser alone is responsible for their definition.

Assembly and maintenance instructions

Installation

It is best to install the actuator vertically with the actuator at the top or horizontally. You must avoid installing the actuator with the actuator pointing downwards.

Check that there is enough space to install the actuator and to carry out maintenance operations where you are planning to install it.

Maintenance

The actuator does not require any specific maintenance if it is used under normal operating conditions.

If the actuator is never opened or closed during normal operation then you should regularly open and close the actuator to check that it is still working correctly.

Assembly / Disassembly

The maintenance and removal/installation of the actuator must be carried out by personnel who are qualified and trained for this type of intervention.



Warning: Before you work on the actuator, check that its electrical supply has been correctly turned off.
Warning: If the actuator is used with fluids that have a temperature above 60°C then people could burn themselves if they touch the actuator.
Warning: Beware of hazardous materials - follow the instructions provided by the suppliers.

DN25 to DN76 valves

Insert the coupler **3** into the actuator drive **4**, check that you put the flat sections in the right way.

Attach the fixing bracket **2** to the actuator **4** using the screws **5** and the washers **6**.

Place the assembly onto the butterfly valve's shaft **1** and push it as far as it will go.
Screw the resulting assembly together with the bolts **7** and the nuts **8**.

DN80 and DN100

Attach the fixing bracket **2** to the actuator **4** using the screws **5** and the washers **6**.

Place the coupler **3** onto the butterfly valve's shaft **1**.
Remove the bolts on the upper part of the valve **1**.

Place the actuator assembly **4** + the fixing bracket **2** onto the valve **1** and push it as far as it will go.
Screw the resulting assembly together with the bolts **7** and the nuts **8**.

Product compatibility

You can assemble the electric actuator UMA with fixing bracket, **61523**, onto the following valve models:

Series 61 - SMS standard

Models **61310 - 61410 - 61510**: Butterfly valves with plain ends

Models **61312 - 61622 - 61632**: Butterfly valves with plain end/male end

Models **61313 - 61623 - 61624**: Butterfly valves with male ends

Models **61314 - 61351 - 61352**: Butterfly valves with plain end/female end + nut

Models **61315 - 61356 - 61357**: Butterfly valves with male end/female end + nut

Models **61358 - 61359 - 61360**: Butterfly valves with female ends + nuts

Series 62 - DIN standard

Models **62311 - 62630 - 62631**: Butterfly valves with plain ends

Models **62312 - 62622 - 62632**: Butterfly valves with plain end/male end

Models **62313 - 62623 - 62624**: Butterfly valves with male ends

Models **62314 - 62351 - 62352**: Butterfly valves with plain end/female end + nut

Models **62315 - 62356 - 62357**: Butterfly valves with male end/female end + nut

Models **62316 - 62358 - 62359**: Butterfly valves with female ends + nuts

Series 63 – CLAMP

Models **63451 - 63455 - 63456**: Butterfly valves with clamp ferrule ends

Models **63453 - 63457 - 63458**: Butterfly valves with plain end/clamp ferrule end

Series 64 – MACON

Models **64311 - 64331 - 64341**: Butterfly valves with plain ends

Models **64312 - 64332 - 64342**: Butterfly valves with plain end/male end

Models **64313 - 64333 - 64343**: Butterfly valves with male ends

Models **64315 - 64334 - 64344**: Butterfly valves with male end/female end + nut

Models **64321 - 64335 - 64345**: Butterfly valves with male end/square flange

Please contact us if you want to order an actuator for assembly with any other valve.

You can refer to the following product data sheets for more technical information:

- **50835-LMOD1**: Electric actuator 90 - IP65