

SMS plug cocks

Model **61384** **3-way plug cock with T-shaped bore, male ends**



Specifications

Dimensions: DN25 to DN76 (1" to 3")

Connection: SMS thread

Operating pressure: 4 bar

Temperature: 0°C to +50°C

Material: 304 or 316L stainless steel

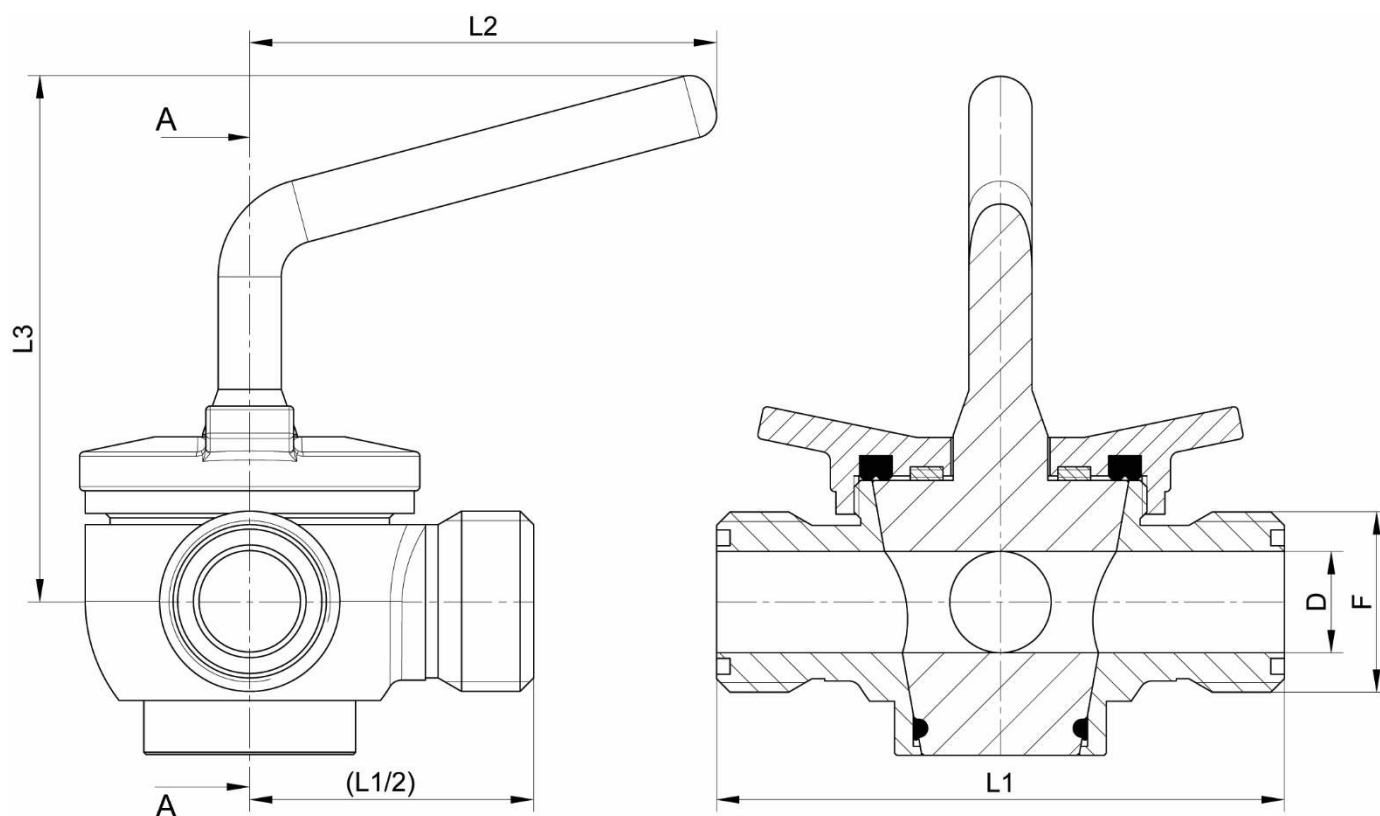
(for the parts that can come into contact with the transported fluid)

NBR/ PTFE gaskets



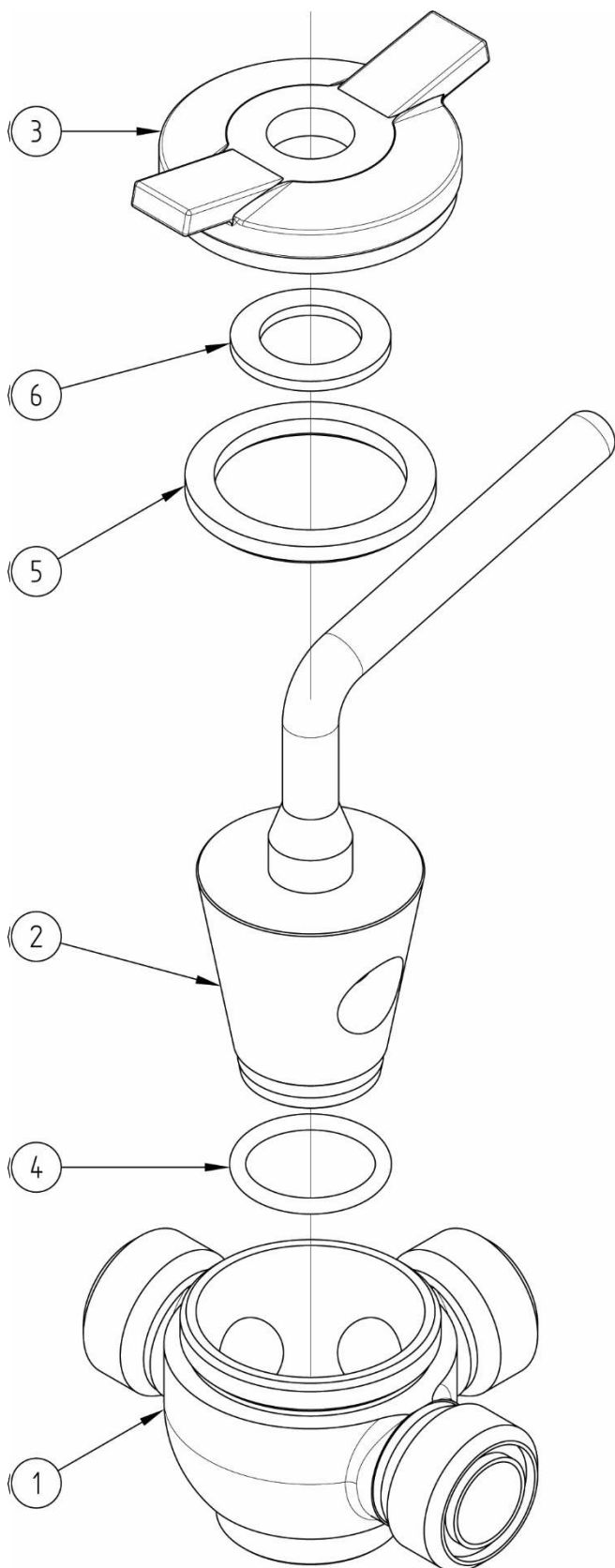
Béné Inox – 11 chemin de la Pierre Blanche – 69800 SAINT-PRIEST – S.A.S with 240 000 € share capital – SIREN N° 311 810 287 Tel. N°: +33 (0)4 78 90 48 22 – Fax N°: +33 (0)4 78 90 69 59 – www.bene-inox.com – bene@bene-inox.com

Technical information, illustrations and photographs are provided for information only, they are not contractual. Some may vary according to the tolerances accepted in the profession and the applicable standards. All instructions for use, disassembly and maintenance are recommendations only. These could also vary depending on product usage conditions, its installation environment and purchaser requirements – of which the purchaser alone is responsible for their definition.



A-A CROSS SECTION

DN (mm)	NB (inches)	D (mm)	F (mm)	L1 (mm)	L2 (mm)	L3 (mm)	Weight (kg)	Part number SS 304	Par number SS 316L
25	1"	22	Rd 40x1/6"	126	100	100	1.95	261384-25	661384-25
38	1 1/2"	35	Rd 60x1/6"	160	115	122	4.25	261384-38	661384-38
51	2"	48	Rd 70x1/6"	170	140	130	6.50	261384-51	661384-51
63	2 1/2"	59.5	Rd 85x1/6"	200	160	150	12.50	261384-63	661384-63
76	3"	72.1	Rd 98x1/6"	230	160	150	16.50	261384-76	661384-76

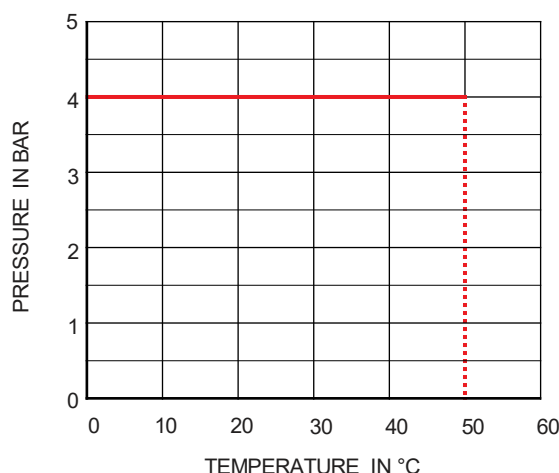


N°	Part Name	Material
1	BODY	304/316L STAINLESS STEEL
2	CONICAL PLUG	304/316L STAINLESS STEEL
3	CAP	304/316L STAINLESS STEEL
4	GASKET (CONICAL PLUG/BODY)	NBR
5	SEALING RING	NBR
6	FRICTION RING	PTFE

Use

Pressure and temperature

For pressure/temperature ratings, see the graph below.



Fluids

This valve is suitable for non-abrasive and non-coagulable fluids, as long as the fluids are chemically compatible with the valve parts that they can come into contact with.

Assembly and maintenance instructions

Installation

You can install the plug cock in any position. However, check that all fluids can flow through it freely.

Check that there is enough space to move the plug cock's handle and to carry out maintenance operations where you are planning to install the plug cock.

Check that all piping is perfectly aligned and that the piping support structure is dimensioned so that the valve is not subject to any external stresses. The piping support structure must only support the pipes, not the plug cock.

How to install a plug cock:

You must not use the plug cock's handle when you are tightening the assembly (this could damage the valve).

Clean the installation and check that the equipment is clean and free from foreign bodies that could damage the plug cock.

Pressure test the installation according to the relevant standards (e.g. EN 12266-1), but do not exceed the plug cock's specifications.

Maintenance

The plug cock does not require any specific maintenance if it is used in normal operating conditions. This plug cock is designed so that it can be disassembled easily, without any tools, to make it easier for you to clean it.

If the plug cock is never opened or closed during normal operation then you should regularly open and close the valve to check that it is still working correctly.



Due to its design, the cap 3 will probably unscrew itself when the plug cock is opened or closed. You can stop this from happening by holding the cap 3 when you open or close the plug cock.

You may need to change some of the plug cock's parts due to wear and tear, or if a fluid has damaged the valve and caused a leak or malfunction.

If this is the case see the "Assembly / Disassembly" section below.

Assembly / Disassembly

The maintenance and removal/installation of the plug cock must be carried out by personnel who are qualified and trained for this type of intervention.



Warning: Before you work on the valve, check that the installation has been stopped and that the piping is empty and is not pressurised.

Warning: Beware of hazardous materials - follow the instructions provided by the suppliers.

Unscrew the cap 3.

Remove the rings 5 and 6.

Remove the conical plug 2 by pulling on its handle.

Change the worn gaskets, model 61385 contains spare parts for this plug cock. Follow the disassembly steps in reverse order to reassemble the plug cock.



You can manually tighten and loosen the cap.

However, if you overtighten it you will not be able to open or close the plug cock valve.

If you do not tighten it enough, the plug cock's body could leak.

Standards and compliance

- This check valve complies with European Pressure Equipment Directive (PED) 2014/68/EU, Article 4 paragraph 3 (formerly 97/23/EC Article 3 paragraph 3)
- This check valve complies with EC Directive 1935/2004.

Béné Inox – 11 chemin de la Pierre Blanche – 69800 SAINT-PRIEST – S.A.S with 240 000 € share capital – SIREN N° 311 810 287 Tel. N°: +33 (0)4 78 90 48 22 – Fax N°: +33 (0)4 78 90 69 59 – www.bene-inox.com – bene@bene-inox.com

Technical information, illustrations and photographs are provided for information only, they are not contractual. Some may vary according to the tolerances accepted in the profession and the applicable standards. All instructions for use, disassembly and maintenance are recommendations only. These could also vary depending on product usage conditions, its installation environment and purchaser requirements – of which the purchaser alone is responsible for their definition.