

Butterfly valve accessories

Model 61323 Stainless steel multi-position pull tab handle for butterfly valves - Ø25 to Ø104



Specifications

Dimensions: DN25 to DN104 (1" to 4")

Ambient temperature: +90°C max.

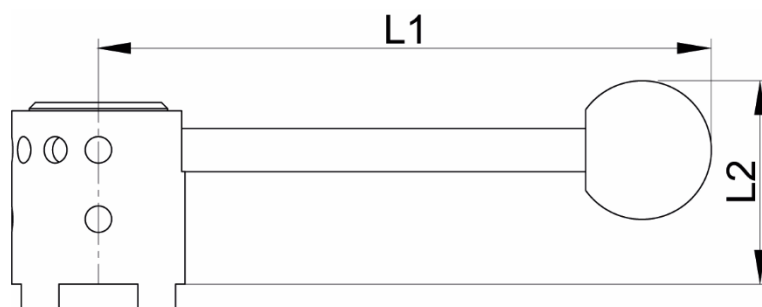
Material: Stainless Steel

ISO 9001

BUREAU VERITAS
Certification

Béné inox – 11 chemin de la Pierre Blanche – 69800 SAINT-PRIEST – S.A.S with 240 000 € share capital – SIREN N° 311 810 287 Tel. N°: +33 (0)4 78 90 48 22 – Fax N°: +33 (0)4 78 90 69 59 – www.bene-inox.com – bene@bene-inox.com

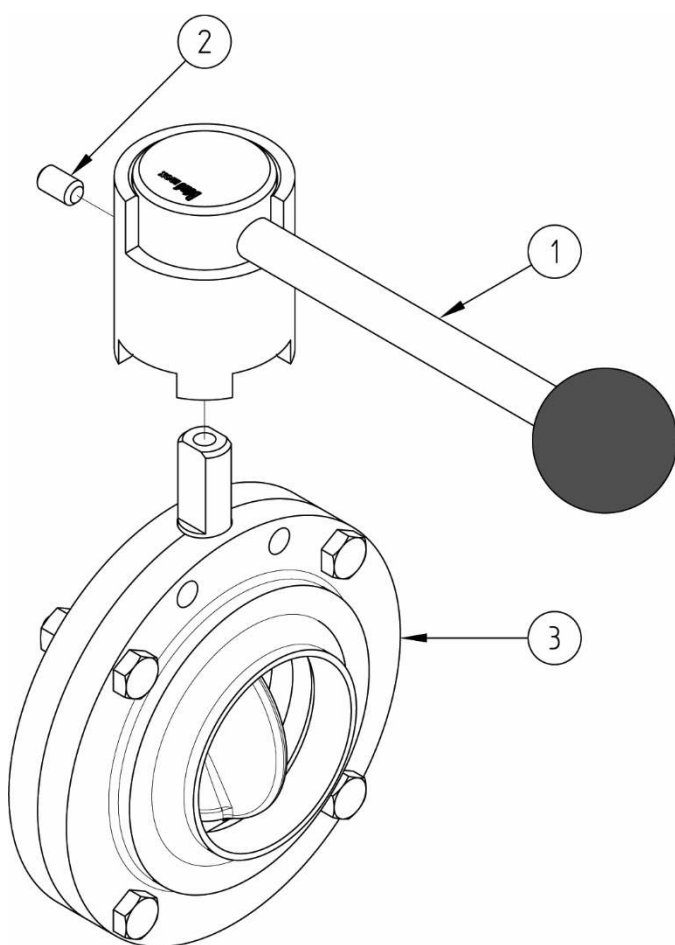
Technical information, illustrations and photographs are provided for information only, they are not contractual. Some may vary according to the tolerances accepted in the profession and the applicable standards. All instructions for use, disassembly and maintenance are recommendations only. These could also vary depending on product usage conditions, its installation environment and purchaser requirements – of which the purchaser alone is responsible for their definition.



Valve DN (mm)	Valve NB (inches)	L1 (mm)	L2 (mm)	Valve shaft (mm)	Weight (kg)	Part number
25 to 76	1" to 3"	141	46	8 (flat side)	0.38	261323-2576
80 to 104	3"1/2 to 4"	170	57	9.5 x 9.5 (square)	0.80	261323-104

4-position handle (within 90°) from DN25 to DN76

2-position handle open/closed from DN80 to DN104

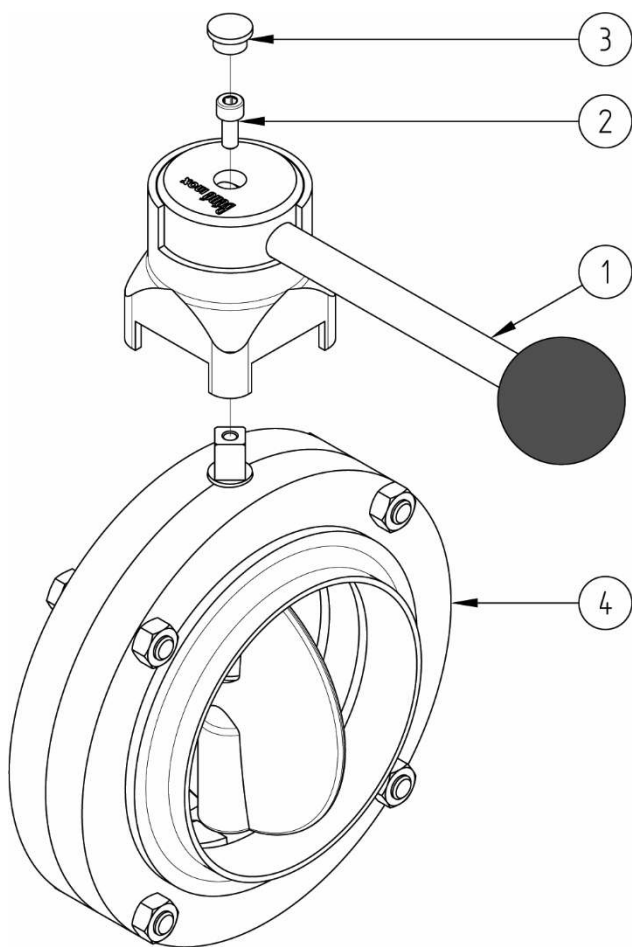


N°	Part Name	Material	Quantity
1	HANDLE	STAINLESS STEEL	1
2	CLAMPING SCREW	A2 STAINLESS STEEL	1
3	BUTTERFLY VALVE	STAINLESS STEEL	1

Assembly (valve DN25 to DN76)

Place the handle **1** onto the butterfly valve's shaft **3**.

Screw the clamping screw **2** into the handle **1** as far as it will go.



N°	Part Name	Material	Quantity
1	HANDLE	STAINLESS STEEL	1
2	SCREW	A2 STAINLESS STEEL	1
3	PLUG	PLASTIC	1
4	BUTTERFLY VALVE	STAINLESS STEEL	1

Assembly (valve DN80 to DN104)

Place the handle **1** onto the butterfly valve's shaft **4**.

Pull the handle to insert the screw **2** as shown and then screw it into the butterfly valve's shaft **4**.

Clip the plug **3** on top of the screw in the handle **1**.