

Ball valves

Model 50290 3-part ball valve with flanges and ISO mounting plate (58259) and aluminium pneumatic actuator (50800)



Specifications

⇒ Valve

Dimensions: DN15 to DN100 (1/2" to 4")

Connection: flanges in accordance with EN 1092-1

Pressure: PN depending on flange dimensions

Operating Temperature: -29°C to +175°C

Material: 316 or CF8M stainless steel

(for the stainless steel parts that can come into contact with the transported fluid)

⇒ Pneumatic actuator

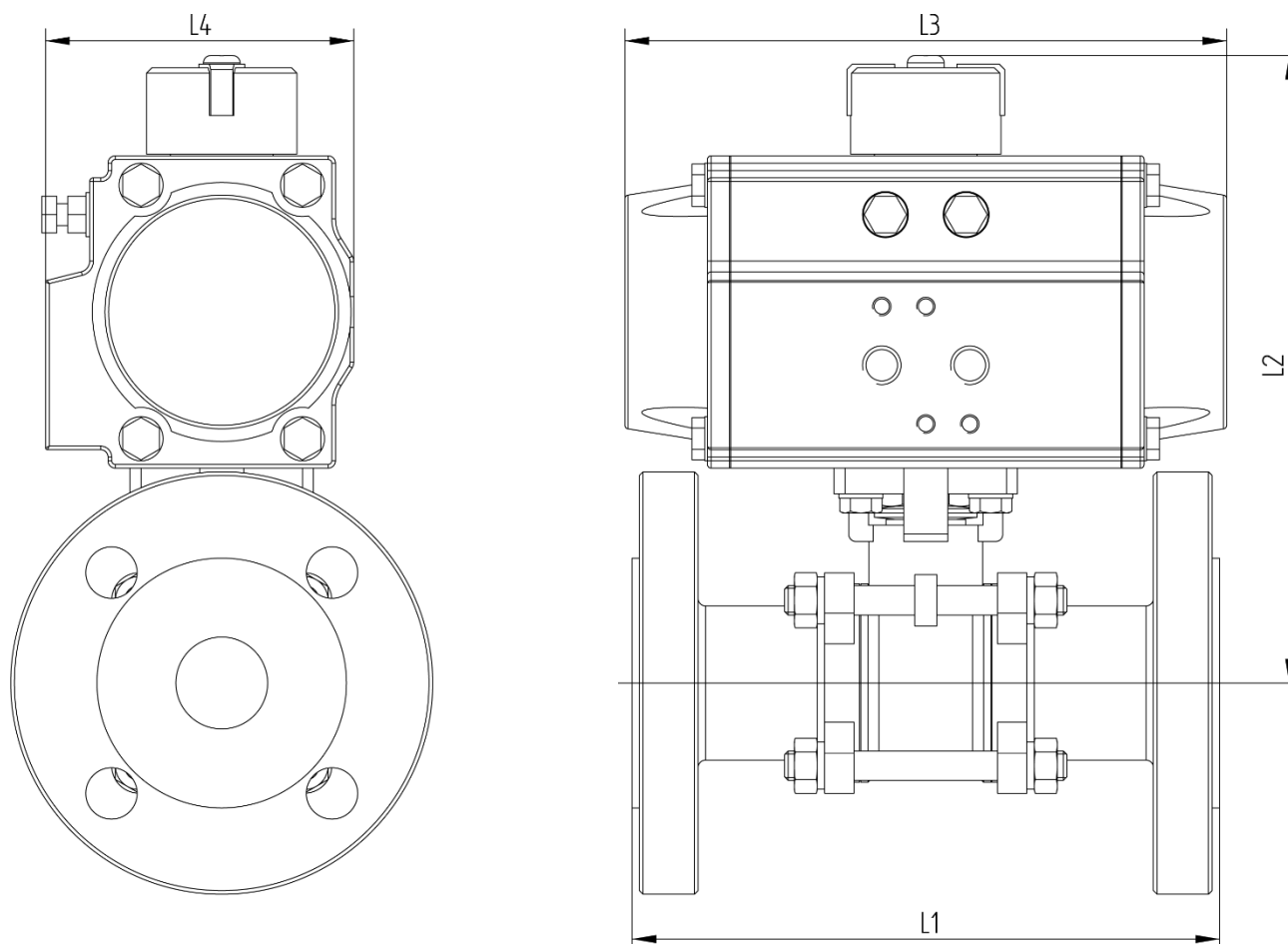
Air connection: 1/8" (VP50 to VP88) or

1/4" (VP100 to VP200)

Operating pressure: 6 to 8 bar

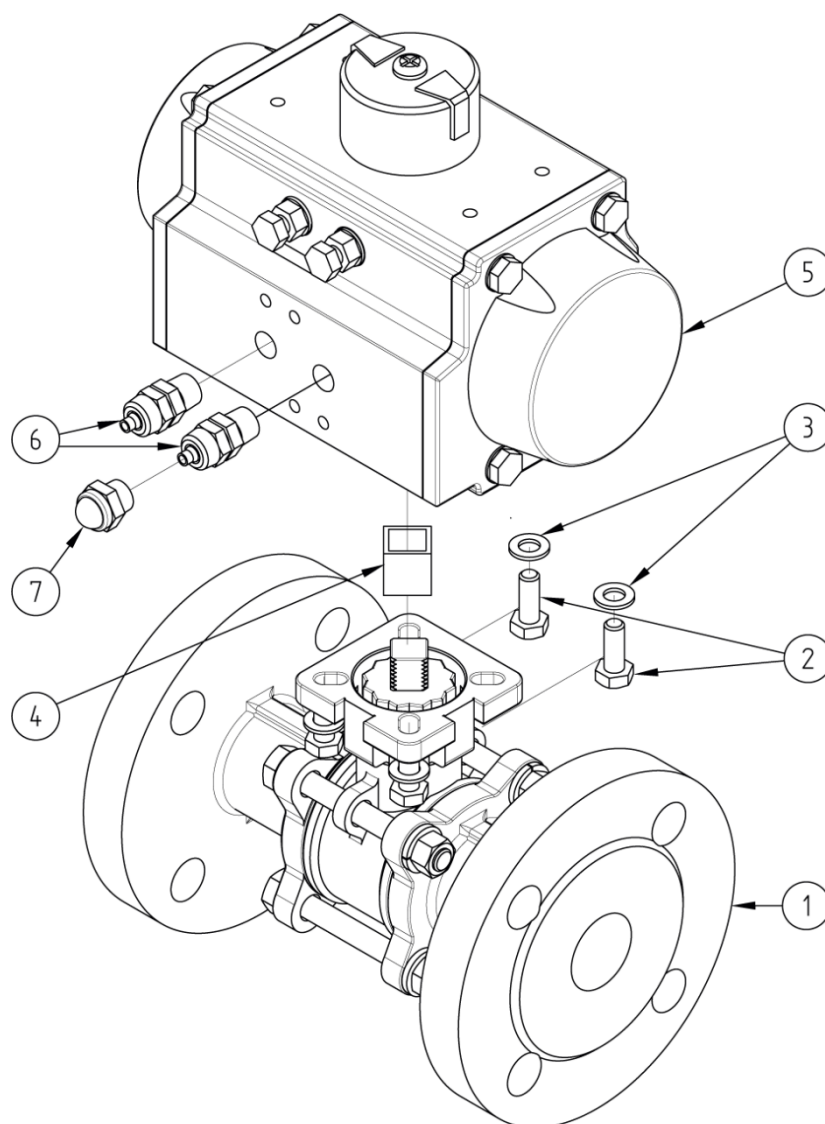
Operating temperature: -20°C to +80°C

Material: Aluminium



DN (mm)	NB (inches)	L1 (mm)	L2 (mm)	L3 (mm)	L4 (mm)	Weight (kg)	Spring return Part No.	Double- acting type Part No.
15	1/2"	130	114	72	148	3.40	450290-15SE	450290-15DE
20	3/4"	150	134	84	164	4.80	450290-20SE	-
20	3/4"	150	121	72	148	4.80	-	450290-20DE
25	1"	160	144	164	84	5.80	450290-25SE	450290-25DE
32	1 1/4"	180	148	164	84	7.60	450290-32SE	450290-32DE
40	1 1/2"	200	175	208	96	10.55	450290-40SE	450290-40DE
50	2"	230	181	208	96	13.55	450290-50SE	450290-50DE
65	2 1/2"	290	228	268	123	20.70	450290-65SE	-
65	2 1/2"	290	216	248	108	20.70	-	450290-65DE
80	3"	310	237	268	123	26.80	450290-80SE	450290-80DE
100	4"	350	299	347	151	46.60	450290-100SE	450290-100DE

N.B. For DN15 and DN20 valves the actuator is assembled perpendicularly to the valve.



N°	Part Name	Material	Quantity
1	3-PART VALVE WITH FLANGES (58259)	CF8M	1
2	FIXING BOLT	STAINLESS STEEL	4
3	WASHER	STAINLESS STEEL	4
4	COUPLING	STAINLESS STEEL	0 or 1
5	PNEUMATIC ACTUATOR (50800)	ALUMINIUM	1
6	CAPPED PNEUMATIC CONNECTOR	NICKEL-PLATED BRASS	1 (SE*) or 2 (DE**)
7	EXHAUST SILENCER	NICKEL-PLATED BRASS	1 (SE*)

*Spring return pneumatic actuator **Double-acting type pneumatic actuator

You can refer to the following product data sheets for more technical information:

- **58259** : 3-part valve with flanges
- **50800SE** : Spring return pneumatic actuator
- **50800DE** : Double-acting type pneumatic actuator

Béné Inox – 11 chemin de la Pierre Blanche – 69800 SAINT-PRIEST – S.A.S with 240 000 € share capital – SIREN N° 311 810 287
Tel. N°: +33 (0)4 78 90 48 22 – Fax N°: +33 (0)4 78 90 69 59 – www.bene-inox.com – bene@bene-inox.com

Technical information, illustrations and photographs are provided for information only, they are not contractual. Some may vary according to the tolerances accepted in the profession and the applicable standards. All instructions for use, disassembly and maintenance are recommendations only. These could also vary depending on product usage conditions, its installation environment and purchaser requirements – of which the purchaser alone is responsible for their definition.