

Ball valves

Model 50286 Wafer ball valve with ISO mounting plate (58249) and fail-safe ATEX electric actuator IP68 (50849)



Specifications

⇒ Valve

Dimensions: DN25 to DN150 (1" to 6")

Connection: flanges in accordance with EN 1092-1

Pressure: PN depending on flange dimensions

Operating Temperature: -29°C to +175°C

Material: 316 or CF8M stainless steel

(for the stainless steel parts that can come into contact with the transported fluid)

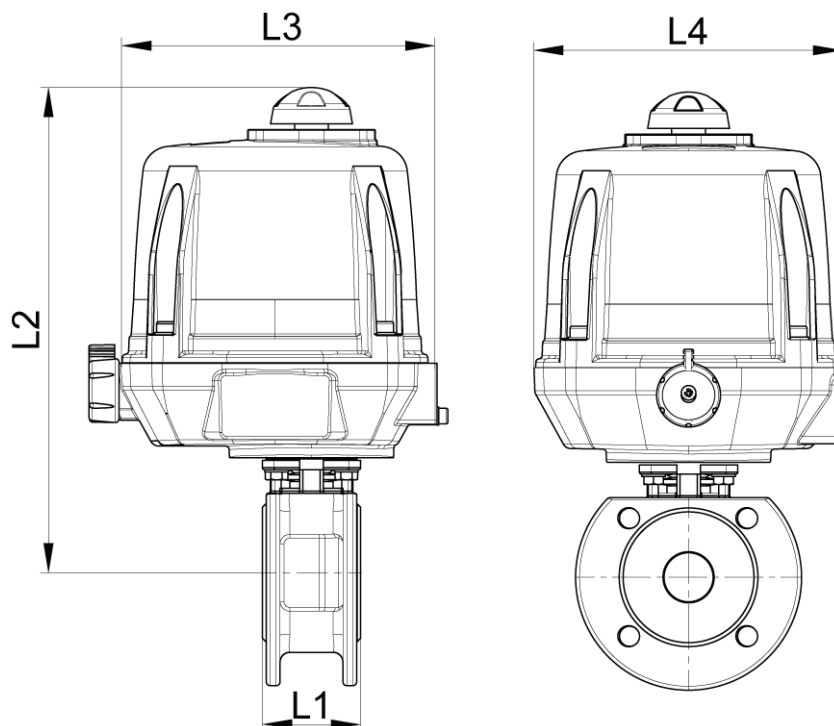
⇒ Electric actuator

Operating temperature: -10°C to +40°C

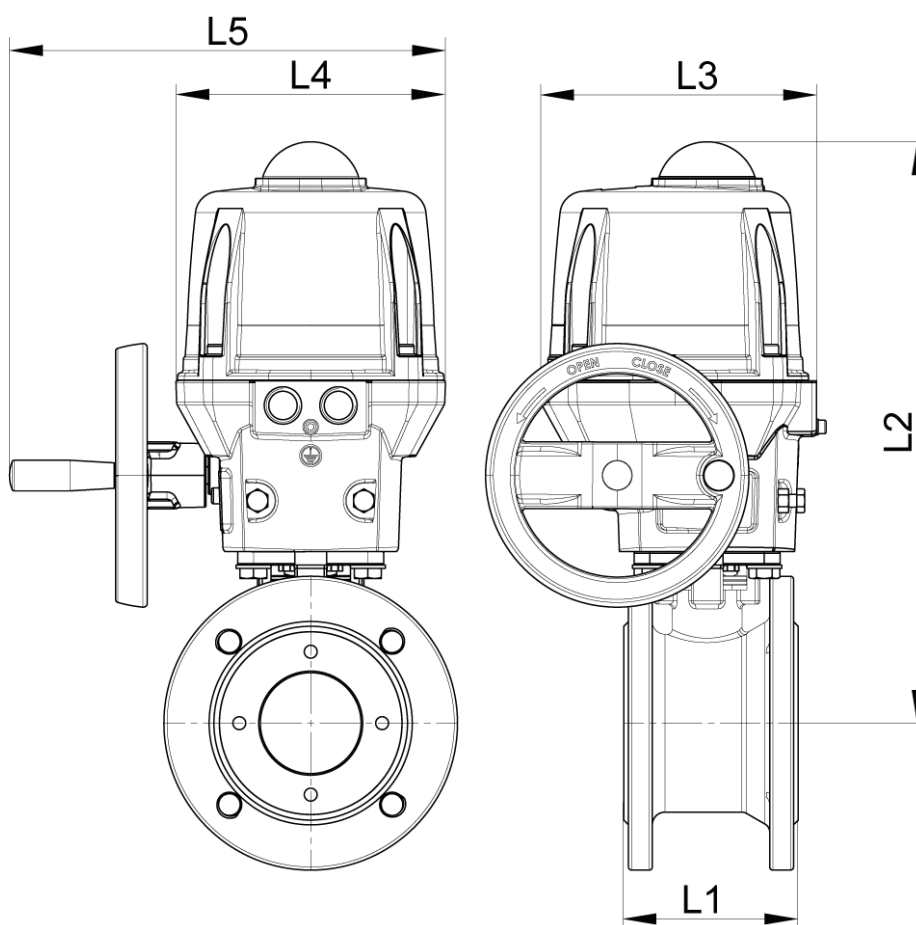
Aluminium housing and cap IP68

Visual position indicator

Anti-condensation heater



DN25 to DN50



DN65 to DN100

Béné Inox – 11 chemin de la Pierre Blanche – 69800 SAINT-PRIEST – S.A.S with 240 000 € share capital – SIREN N° 311 810 287
Tel. N°: +33 (0)4 78 90 48 22 – Fax N°: +33 (0)4 78 90 69 59 – www.bene-inox.com – bene@bene-inox.com

Technical information, illustrations and photographs are provided for information only, they are not contractual. Some may vary according to the tolerances accepted in the profession and the applicable standards. All instructions for use, disassembly and maintenance are recommendations only. These could also vary depending on product usage conditions, its installation environment and purchaser requirements – of which the purchaser alone is responsible for their definition.

DN (mm)	NB (inches)	L1 (mm)	L2 (mm)	L3 (mm)	L4 (mm)	L5 (mm)	Opening/ closing time (90°) (s)	Weight (kg)	Part No. 100-230V AC and 100-350V DC	Part No. 15-30V AC and 12-48V DC
25	1"	50	260	192	170	x	7	7.00	450286-25A	450286-25B
32	1"1/4	60	264	192	170	x	7	7.90	450286-32A	450286-32B
40	1"1/2	65	273	192	170	x	15	9.20	450286-40A	450286-40B
50	2"	78	279	192	170	x	20	11.10	450286-50A	450286-50B
65	2"1/2	110	358	209	170	275	15	16.50	450286-65A	450286-65B
80	3"	120	367	209	170	275	30	21.20	450286-80A	450286-80B
100	4"	150	398	209	170	275	60	28.90	450286-100A	450286-100B

ATEX 1/4 turn (90°) electric actuator with aluminium housing and cap IP68.

Visual position indicator. Manual override control with safe clutch disengagement.

Configurable limit switches. Torque limiting device. Anti-condensation heater.

Actuator operating temperature: -10°C to +40°C.

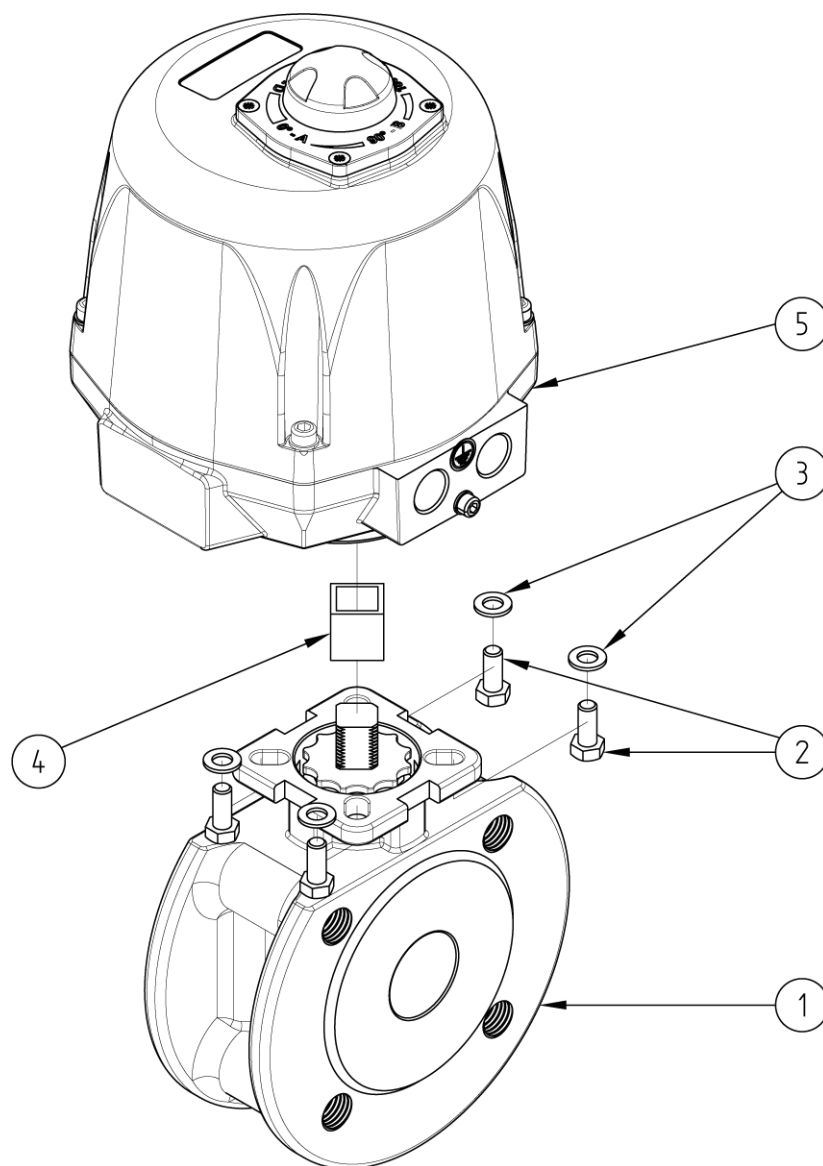
Duty cycle: 50%. Number of starts per hour: 150.

Actuator sized for a valve $\Delta P = \max$. 16 bar. For $\Delta P > 16$ bar, please contact us.

Fail-safe version: The internal fail-safe backup unit (circuit board + battery) makes sure that the valve returns to the closed position if there is a power cut.

You must order earthing braids separately.

Cable glands are not supplied.



N°	Part Name	Material	Quantity
1	WAFFER VALVE (58249)	CF8M	1
2	FIXING BOLT	STAINLESS STEEL	4
3	WASHER	STAINLESS STEEL	4
4	COUPLING	STAINLESS STEEL	0 or 1
5	ELECTRIC ACTUATOR (50849)	ALUMINIUM	1

You can refer to the following product data sheets for more technical information:

- **58249** : Wafer valve
- **50849** : Fail-safe ATEX 1/4 turn (90°) electric actuator - IP68