

Ball valves

Model 50270

**Wafer ball valve with ISO mounting plate
(58249)
and aluminium pneumatic actuator
(50800)**



Specifications

⇒ Valve

Dimensions: DN15 to DN150 (1/2" to 6")

Connection: flanges in accordance with EN 1092-1

Pressure: PN depending on flange dimensions

Operating Temperature: -29°C to +175°C

Material: 316 or 1.4408 stainless steel

(for the stainless steel parts that can come into contact with the transported fluid)

⇒ Pneumatic actuator

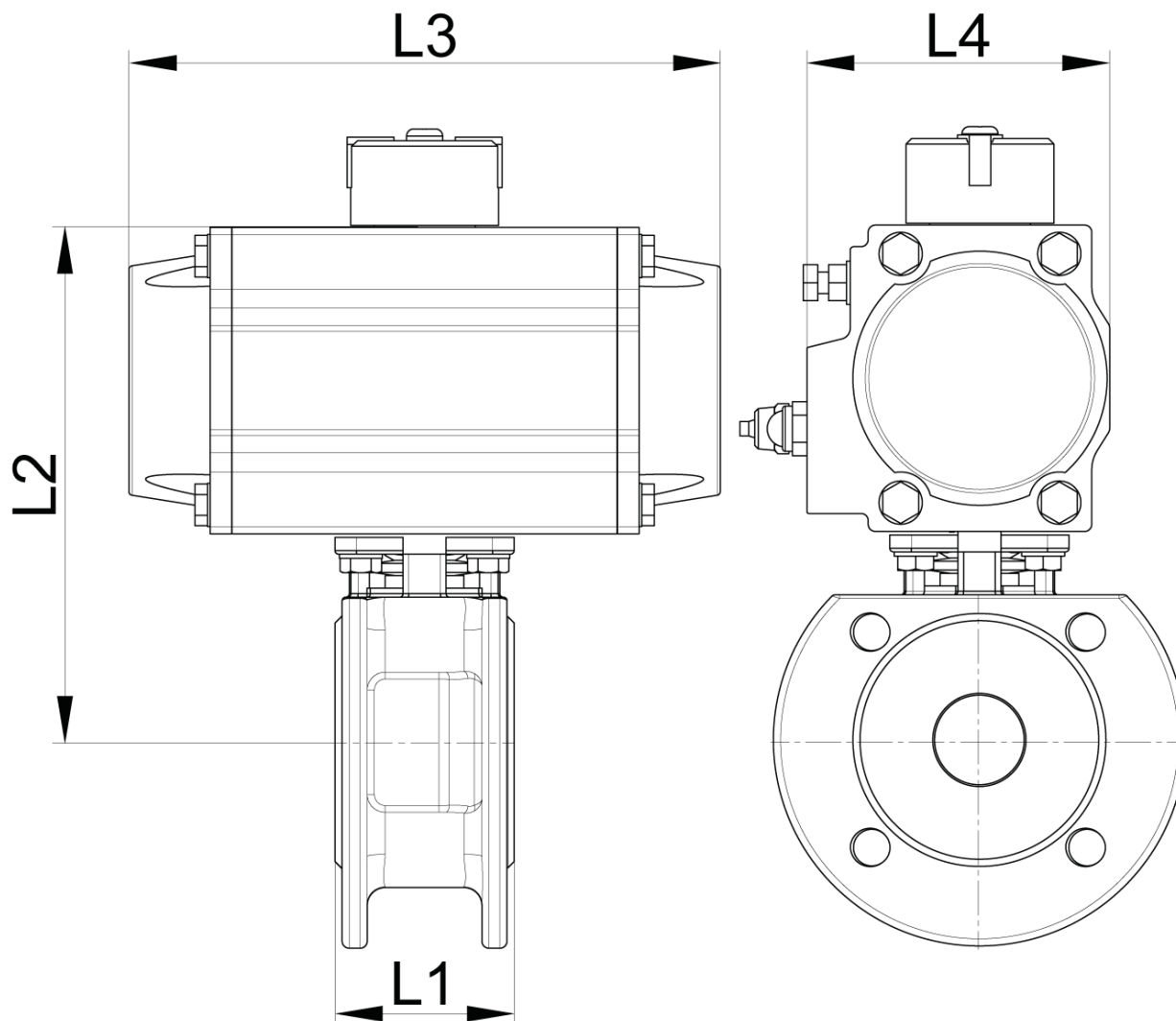
Air connection: 1/8" (VP50 to VP88) or

1/4" (VP100 to VP200)

Operating pressure: 6 to 8 bar

Operating temperature: -20°C to +80°C

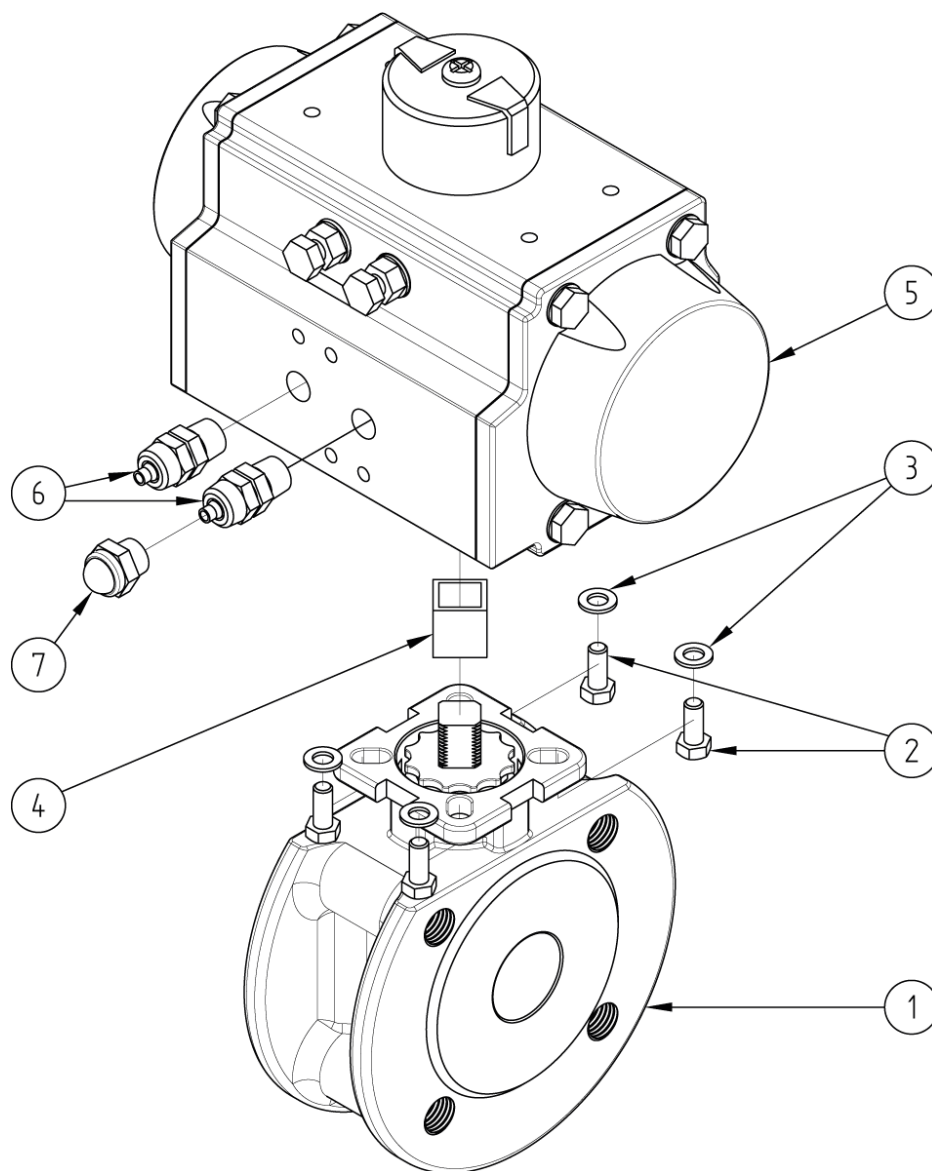
Material: Aluminium



DN (mm)	NB (inches)	PN (bar)	L1 (mm)	L2 (mm)	L3 (mm)	L4 (mm)	Weight (kg)	Spring return Part No.	Double- acting type Part No.
15	1/2"	40	42	118	148	72	2.60	450270-15SE	450270-15DE
20	3/4"	40	43	136	164	84	3.30	450270-20SE	-
20	3/4"	40	43	123	148	72	2.80	-	450270-20DE
25	1"	40	50	147	164	84	4.30	450270-25SE	450270-25DE
32	1 1/4"	40	60	157	164	84	5.20	450270-32SE	450270-32DE
40	1 1/2"	40	65	181	208	96	8.05	450270-40SE	450270-40DE
50	2"	40	78	189	208	96	9.95	450270-50SE	450270-50DE
65	2 1/2"	16	110	236	268	123	16.10	450270-65SE	-
65	2 1/2"	16	110	224	248	108	14.50	-	450270-65DE
80	3"	16	120	244	268	123	20.80	450270-80SE	450270-80DE
100	4"	16	150	298	347	151	33.80	450270-100SE	450270-100DE
125	5"	16	180	373	475	202	56.40	-	450270-125DE
150	6"	16	225	389	475	202	73.90	-	450270-150DE

Béné Inox – 11 chemin de la Pierre Blanche – 69800 SAINT-PRIEST – S.A.S with 240 000 € share capital – SIREN N° 311 810 287
Tel. N°: +33 (0)4 78 90 48 22 – Fax N°: +33 (0)4 78 90 69 59 – www.bene-inox.com – bene@bene-inox.com

Technical information, illustrations and photographs are provided for information only, they are not contractual. Some may vary according to the tolerances accepted in the profession and the applicable standards. All instructions for use, disassembly and maintenance are recommendations only. These could also vary depending on product usage conditions, its installation environment and purchaser requirements – of which the purchaser alone is responsible for their definition.



N°	Part Name	Material	Quantity
1	WAFFER VALVE (58249)	1.4408	1
2	FIXING BOLT	STAINLESS STEEL	4
3	WASHER	STAINLESS STEEL	4
4	COUPLING	STAINLESS STEEL	0 or 1
5	PNEUMATIC ACTUATOR (50800)	ALUMINIUM	1
6	CAPPED PNEUMATIC CONNECTOR	NICKEL-PLATED BRASS	1 (SE*) or 2 (DE**)
7	EXHAUST SILENCER	NICKEL-PLATED BRASS	1 (SE*)

*Spring return pneumatic actuator **Double-acting type pneumatic actuator

You can refer to the following product data sheets for more technical information:

- **58249** : Wafer valve with female threaded holes
- **50800SE** : Spring return pneumatic actuator
- **50800DE** : Double-acting type pneumatic actuator

Béné Inox – 11 chemin de la Pierre Blanche – 69800 SAINT-PRIEST – S.A.S with 240 000 € share capital – SIREN N° 311 810 287
Tel. N°: +33 (0)4 78 90 48 22 – Fax N°: +33 (0)4 78 90 69 59 – www.bene-inox.com – bene@bene-inox.com

Technical information, illustrations and photographs are provided for information only, they are not contractual. Some may vary according to the tolerances accepted in the profession and the applicable standards. All instructions for use, disassembly and maintenance are recommendations only. These could also vary depending on product usage conditions, its installation environment and purchaser requirements – of which the purchaser alone is responsible for their definition.