

# Ball valves

## Model 50246 3-way ball valve with flanges and L-shaped bore (58229) and electric actuator IP65 (50835)



### Specifications

#### ⇒ Valve

**Dimensions:** DN15 to DN80 (1/2" to 3")

**Connection:** flanges in accordance with EN 1092-1

**Pressure:** PN depending on flange dimensions

**Operating Temperature:** -29°C to +175°C

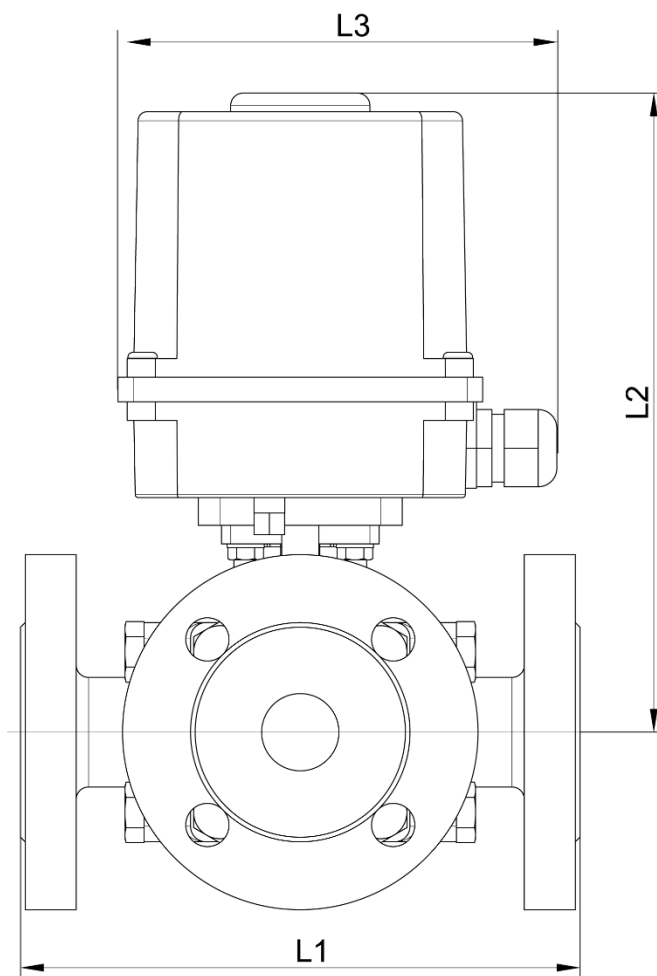
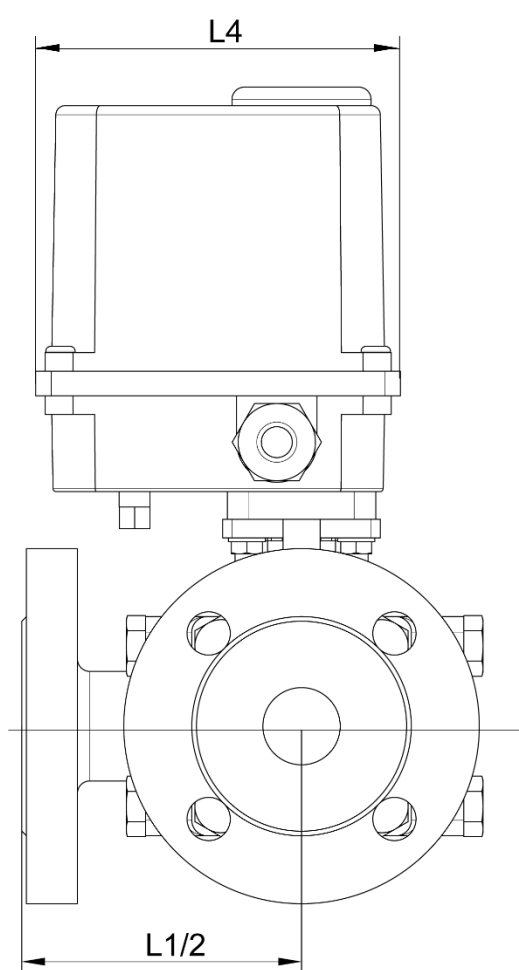
**Material:** 316 or 1.4408 stainless steel

(for the stainless steel parts that can come into contact with the transported fluid)

#### ⇒ Electric actuator

**Operating temperature:** -10°C to +50°C

**Material:** Plastic

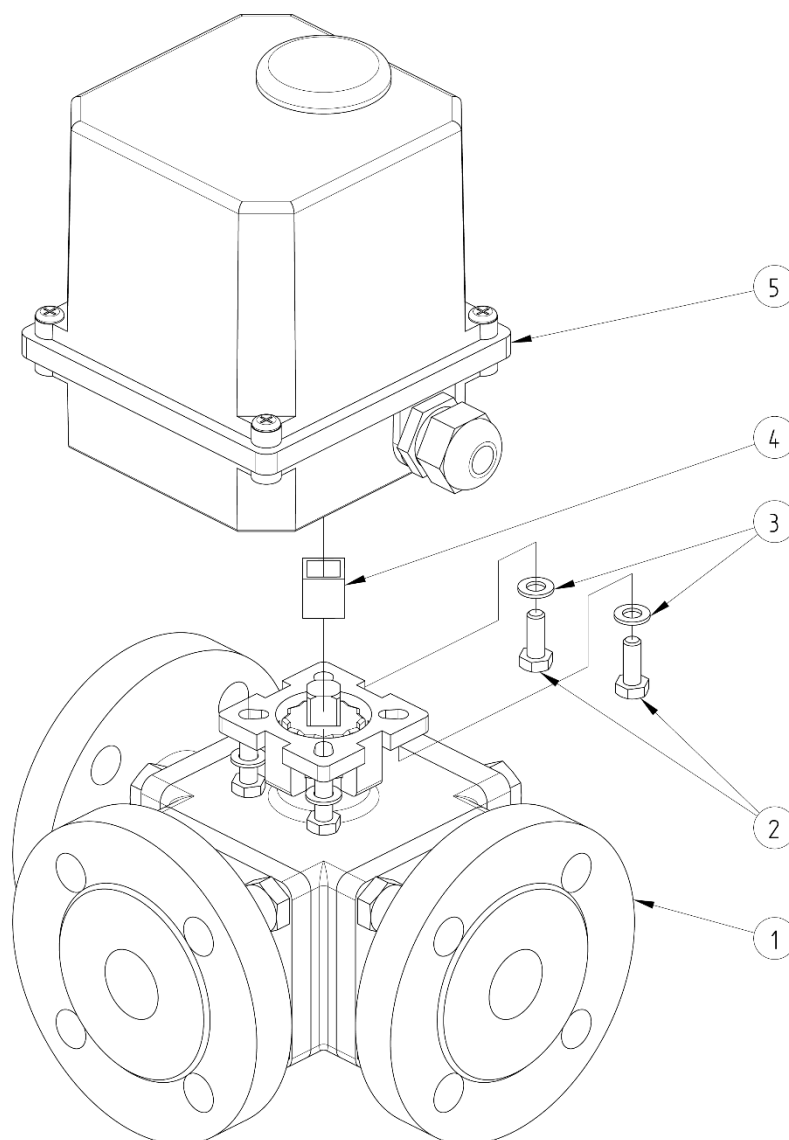


DN (mm)	NB (inches)	L1 (mm)	L2 (mm)	L3 (mm)	L4 (mm)	Opening/ closing time (s)	Weight (kg)	Part No. 230V 50Hz
15	1/2"	150	196	143	118	10	7.90	450246-15A
20	3/4"	165	200	143	118	10	8.90	450246-20A
25	1"	181	211	143	118	10	10.40	450246-25A
32	1"1/4	190	215	143	118	10	12.40	450246-32A
40	1"1/2	212	228	143	118	10	14.80	450246-40A
50	2"	230	259	204	165	8	26.40	450246-50A
65	2"1/2	290	274	204	165	8	35.70	450246-65A
80	3"	310	286	204	165	8	50.70	450246-80A

DN (mm)	NB (inches)	Opening/ closing time (s)	Part No. 24V 50Hz	Opening/ closing time (s)	Part No. 24V DC
15	1/2"	15	450246-15B	16	450246-15C
20	3/4"	15	450246-20B	16	450246-20C
25	1"	15	450246-25B	16	450246-25C
32	1"1/4	15	450246-32B	16	450246-32C
40	1"1/2	15	450246-40B	16	450246-40C

**Béné Inox** – 11 chemin de la Pierre Blanche – 69800 SAINT-PRIEST – S.A.S with 240 000 € share capital – SIREN N° 311 810 287  
Tel. N°: +33 (0)4 78 90 48 22 – Fax N°: +33 (0)4 78 90 69 59 – [www.bene-inox.com](http://www.bene-inox.com) – [bene@bene-inox.com](mailto:bene@bene-inox.com)

Technical information, illustrations and photographs are provided for information only, they are not contractual. Some may vary according to the tolerances accepted in the profession and the applicable standards. All instructions for use, disassembly and maintenance are recommendations only. These could also vary depending on product usage conditions, its installation environment and purchaser requirements – of which the purchaser alone is responsible for their definition.



N°	Part Name	Material	Quantity
1	3-WAY VALVE WITH FLANGES (58229)	1.4408	1
2	FIXING BOLT	STAINLESS STEEL	4
3	WASHER	STAINLESS STEEL	4
4	COUPLING	STAINLESS STEEL	0 or 1
5	ELECTRIC ACTUATOR (50835)	PLASTIC	1

You can refer to the following product data sheets for more technical information:

- **58229** : 3-way valve with flanges - L-shaped bore
- **50835** : Electric actuator