

Ball valves

Model 50240 3-way ball valve with flanges and L-shaped bore (58229) with aluminium pneumatic actuator (50800)



Specifications

⇒ Valve

Dimensions: DN15 to DN100 (1/2" to 4")

Connection: flanges in accordance with EN 1092-1

Pressure: PN depending on flange dimensions

Operating Temperature: -29°C to +175°C

Material: 316 or 1.4408 stainless steel

(for the stainless steel parts that can come into contact with the transported fluid)

⇒ Pneumatic actuator

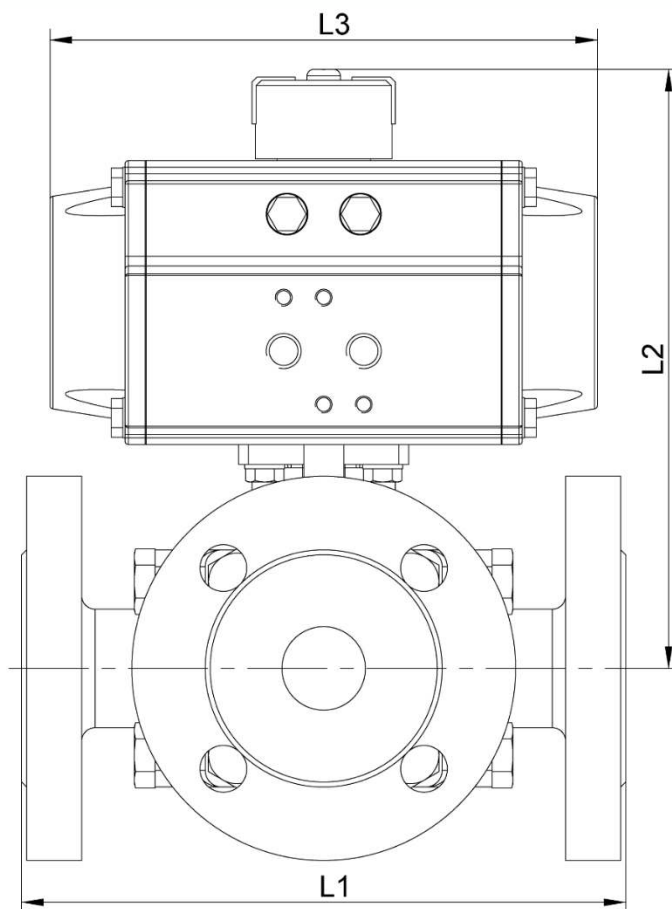
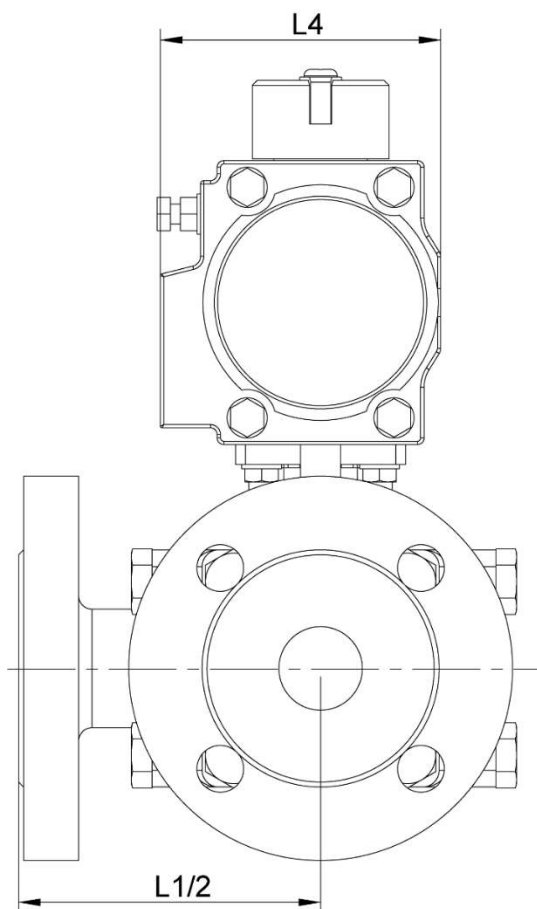
Air connection: 1/8" (VP50 to VP88) or

1/4" (VP100 to VP200)

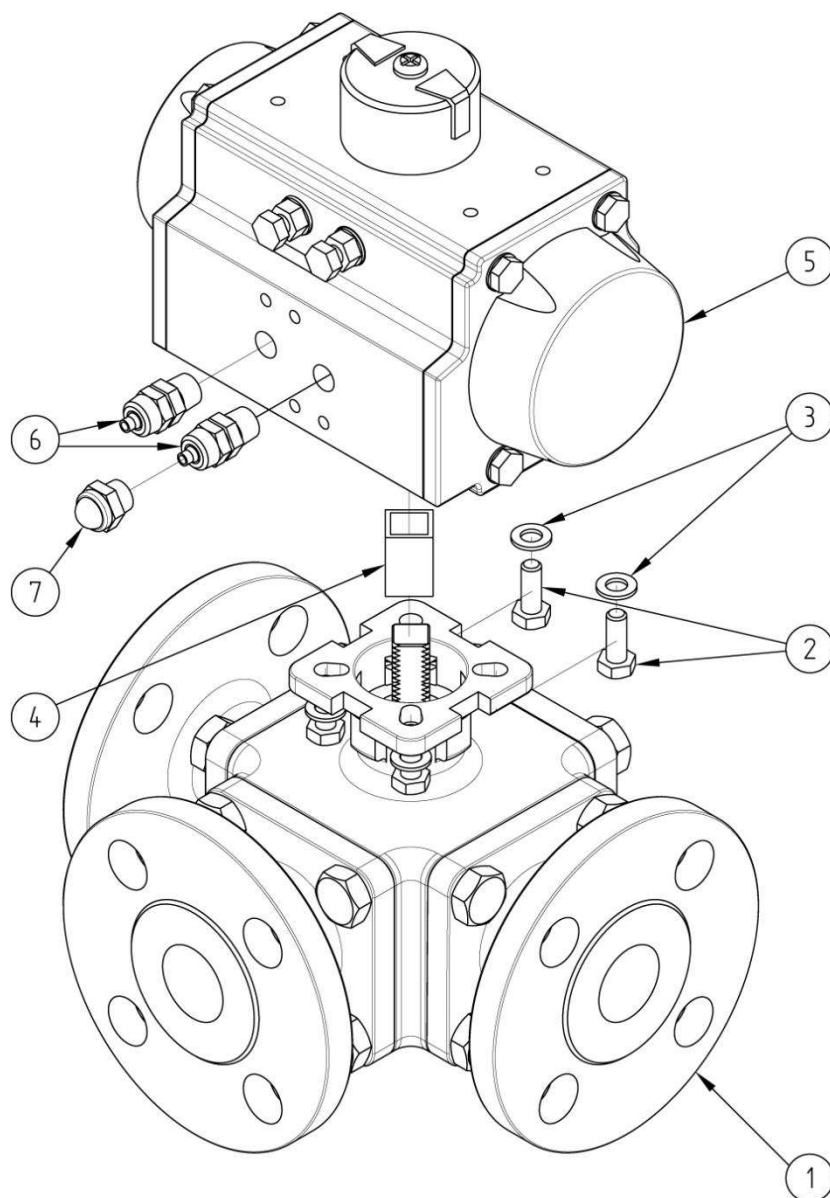
Operating pressure: 6 to 8 bar

Operating temperature: -20°C to +80°C

Material: Aluminium



DN (mm)	NB (inches)	L1 (mm)	L2 (mm)	L3 (mm)	L4 (mm)	Weight (kg)	Spring return Part No.	Double- acting type Part No.
15	1/2"	150	125	148	72	7.50	450240-15SE	450240-15DE
20	3/4"	165	142	164	84	9.00	450240-20SE	-
20	3/4"	165	129	148	72	8.50	-	450240-20DE
25	1"	181	153	164	84	10.50	450240-25SE	450240-25DE
32	1 1/4"	190	157	164	84	12.50	450240-32SE	450240-32DE
40	1 1/2"	212	188	208	96	16.45	450240-40SE	450240-40DE
50	2"	230	195	208	96	25.45	450240-50SE	450240-50DE
65	2 1/2"	290	235	268	123	37.50	450240-65SE	-
65	2 1/2"	290	223	248	108	35.90	-	450240-65DE
80	3"	310	247	268	123	52.50	450240-80SE	450240-80DE
100	4"	352	309	347	151	83.80	450240-100SE	450240-100DE



N°	Part Name	Material	Quantity
1	3-WAY VALVE WITH FLANGES (58229)	1.4408	1
2	FIXING BOLT	STAINLESS STEEL	4
3	WASHER	STAINLESS STEEL	4
4	COUPLING	STAINLESS STEEL	0 or 1
5	PNEUMATIC ACTUATOR (50800)	ALUMINIUM	1
6	CAPPED PNEUMATIC CONNECTOR	NICKEL-PLATED BRASS	1 (SE*) or 2 (DE**)
7	EXHAUST SILENCER	NICKEL-PLATED BRASS	1 (SE*)

*Spring return pneumatic actuator **Double-acting type pneumatic actuator

You can refer to the following product data sheets for more technical information:

- **58229** : 3-way valve with flanges - L-shaped bore
- **50800SE** : Spring return pneumatic actuator
- **50800DE** : Double-acting type pneumatic actuator

Béné Inox – 11 chemin de la Pierre Blanche – 69800 SAINT-PRIEST – S.A.S with 240 000 € share capital – SIREN N° 311 810 287
Tel. N°: +33 (0)4 78 90 48 22 – Fax N°: +33 (0)4 78 90 69 59 – www.bene-inox.com – bene@bene-inox.com

Technical information, illustrations and photographs are provided for information only, they are not contractual. Some may vary according to the tolerances accepted in the profession and the applicable standards. All instructions for use, disassembly and maintenance are recommendations only. These could also vary depending on product usage conditions, its installation environment and purchaser requirements – of which the purchaser alone is responsible for their definition.