

Ball valves

Model 50227

**3-way F/F/F ball valve with T-shaped bore
(58217)
and fail-safe electric actuator IP66 (50841)**



Specifications

⇒ Valve

Dimensions: DN8 to DN50 (1/4" to 2")

Connection: BSP female thread

Pressure: PN63 (1000 lbs)

Operating temperature: -29°C to +175°C

Material: 316 or CF8M stainless steel
(for the stainless steel parts that can come into contact with the transported fluid)

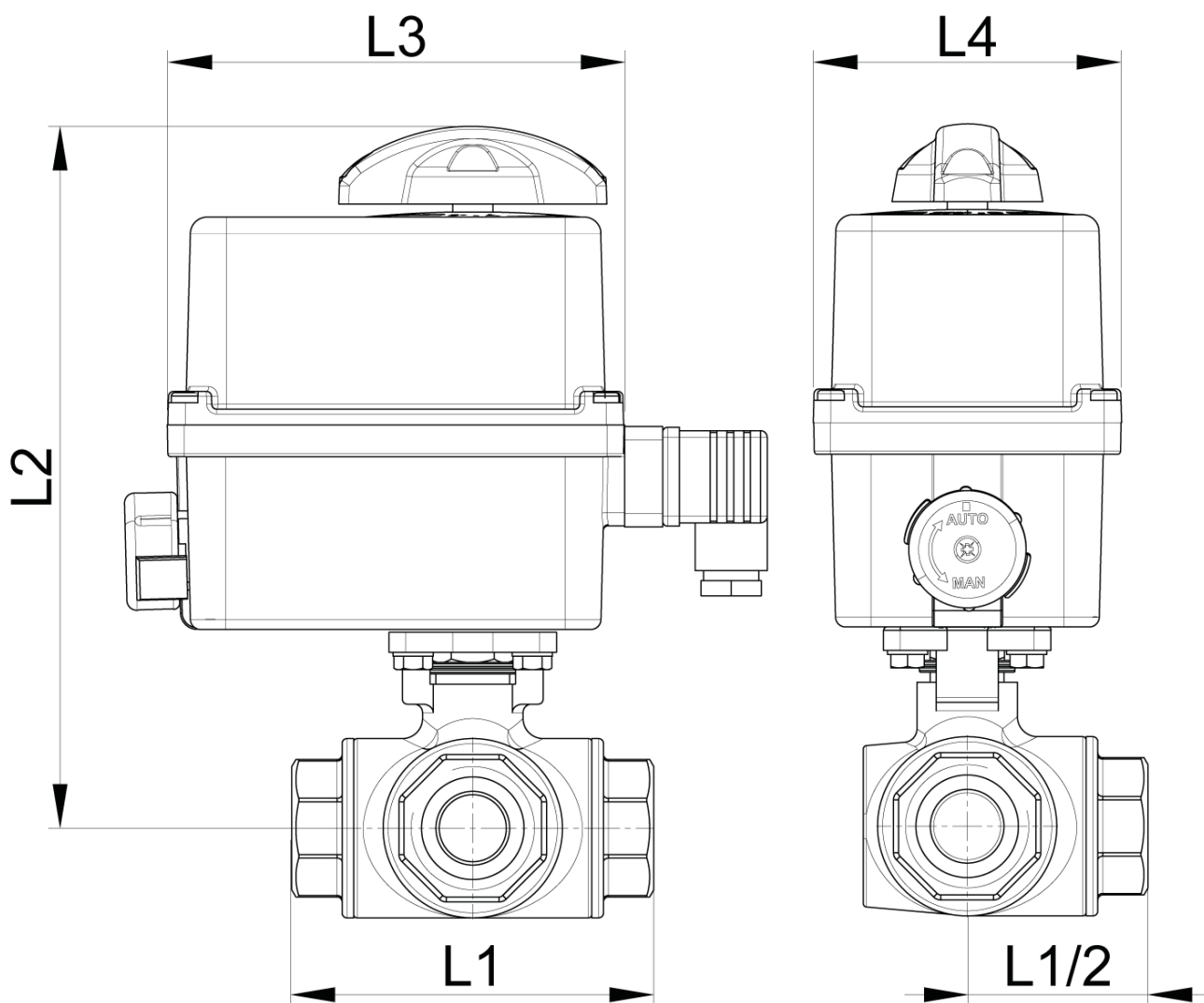
⇒ Electric actuator

Operating temperature: -10°C to +40°C

Plastic housing IP66

Visual position indicator

Anti-condensation heater



DN (mm)	NB (inches)	L1 (mm)	L2 (mm)	L3 (mm)	L4 (mm)	Opening/ closing time (90°) (s)	Weight (kg)	Part No. 100-230V AC and 100-350V DC	Opening/ closing time (90°) (s)	Part No. 15-30V AC and 12-48V DC
8	1/4"	79	194	136	92	12	1.75	450227-8A	12	450227-8B
10	3/8"	79	194	136	92	12	1.75	450227-10A	12	450227-10B
15	1/2"	79	194	136	92	12	1.75	450227-15A	12	450227-15B
20	3/4"	90	201	136	92	12	2.30	450227-20A	12	450227-20B
25	1"	108	212	136	92	12	2.80	450227-25A	12	450227-25B
32	1"1/4	124	239	151	128	7	4.80	450227-32A	7	450227-32B
40	1"1/2	135	250	151	128	12	5.90	450227-40A	12	450227-40B
50	2"	164	259	151	128	12	8.80	450227-50A	12	450227-50B

Electric actuator with plastic housing with IP66 protection rating.

Visual position indicator. Manual override control with safe clutch disengagement.

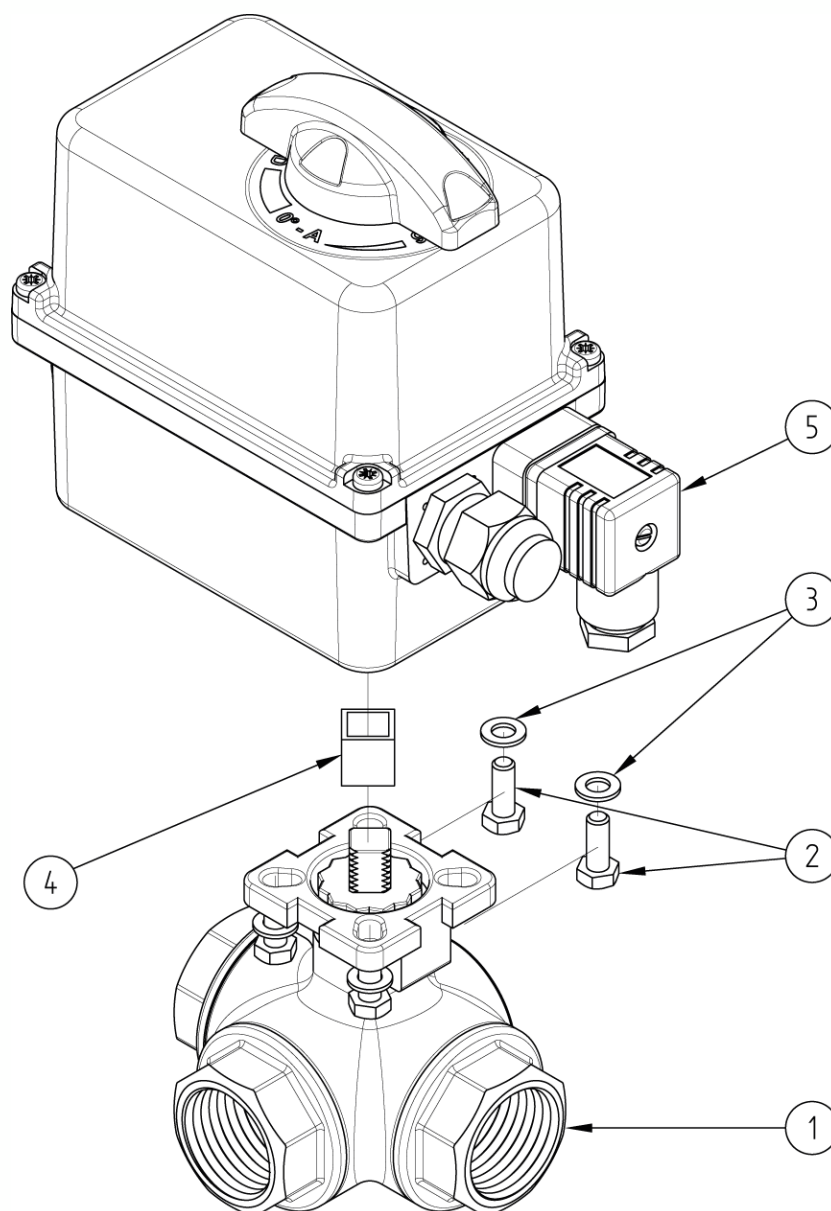
Configurable limit switches. Torque limiting device. Anti-condensation heater.

Actuator operating temperature: -10°C to +40°C.

Duty cycle: 50%. Number of starts per hour: 150.

Actuator sized for a valve $\Delta P = \max. 16 \text{ bar}$. For $\Delta P > 16 \text{ bar}$, please contact us.

Fail-safe version: The internal fail-safe backup unit (circuit board + battery) makes sure that the valve returns to the initial position if there is a power cut.



N°	Part Name	Material	Quantity
1	3-WAY VALVE (58217)	CF8M	1
2	FIXING BOLT	STAINLESS STEEL	4
3	WASHER	STAINLESS STEEL	4
4	COUPLING	STAINLESS STEEL	0 or 1
5	ELECTRIC ACTUATOR (50841)	PLASTIC	1

You can refer to the following product data sheets for more technical information:

- **58217** : 3-way F/F/F valve - T-shaped bore
- **50841** : Fail-safe ¼ turn (90°) electric actuator - IP66

Béné Inox – 11 chemin de la Pierre Blanche – 69800 SAINT-PRIEST – S.A.S with 240 000 € share capital – SIREN N° 311 810 287
Tel. N°: +33 (0)4 78 90 48 22 – Fax N°: +33 (0)4 78 90 69 59 – www.bene-inox.com – bene@bene-inox.com

Technical information, illustrations and photographs are provided for information only, they are not contractual. Some may vary according to the tolerances accepted in the profession and the applicable standards. All instructions for use, disassembly and maintenance are recommendations only. These could also vary depending on product usage conditions, its installation environment and purchaser requirements – of which the purchaser alone is responsible for their definition.