

# Ball valves

**Model 50223** 3-way F/F/F ball valve with T-shaped bore (58217) and electric actuator IP66 (50840)



## Specifications

### ⇒ Valve

**Dimensions:** DN8 to DN50 (1/4" to 2")

**Connection:** BSP female thread

**Pressure:** PN63 (1000 lbs)

**Operating temperature:** -29°C to +175°C

**Material:** 316 or CF8M stainless steel  
(for the stainless steel parts that can come into contact with the transported fluid)

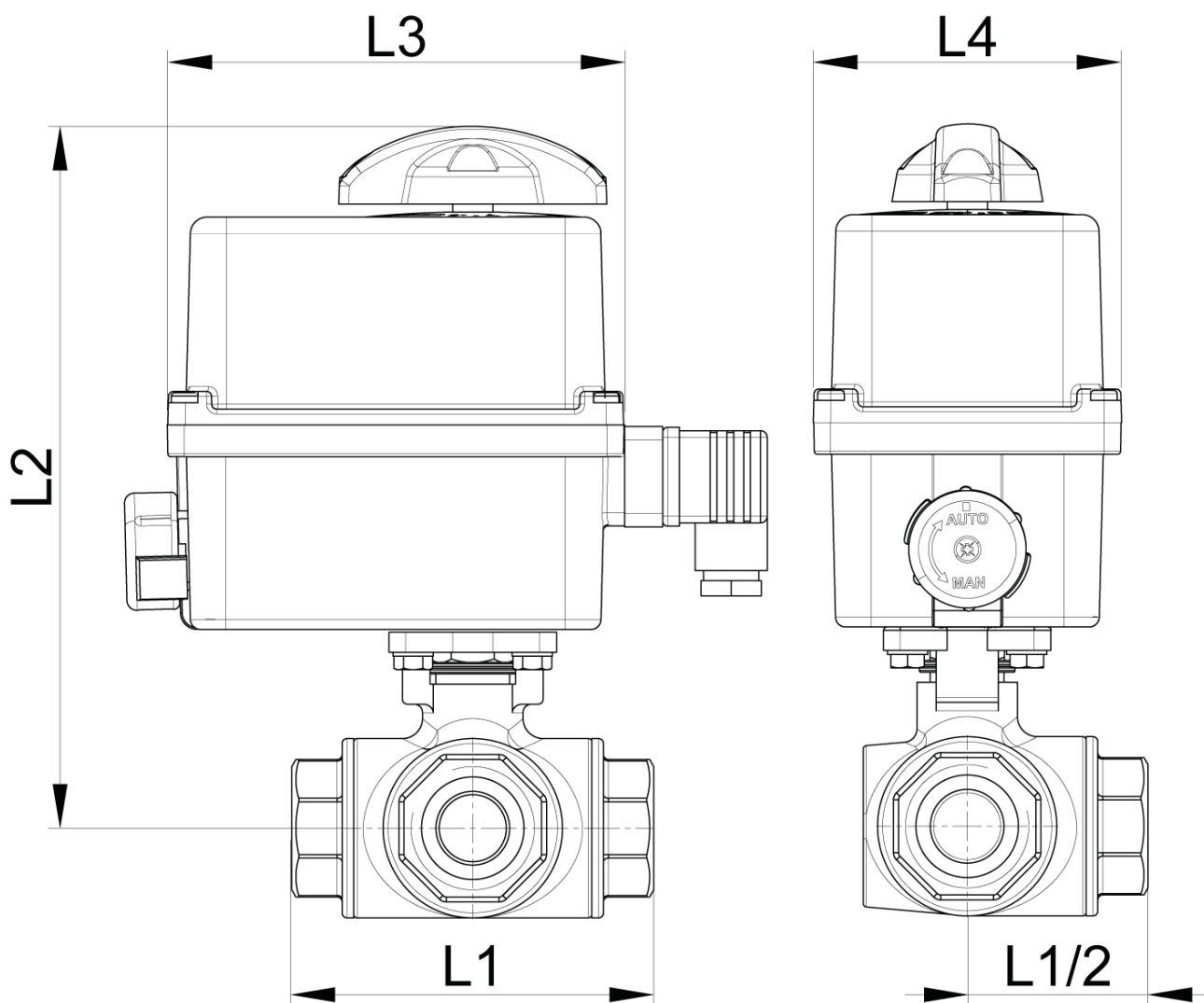
### ⇒ Electric actuator

**Operating temperature:** -10°C to +55°C

Plastic housing IP66

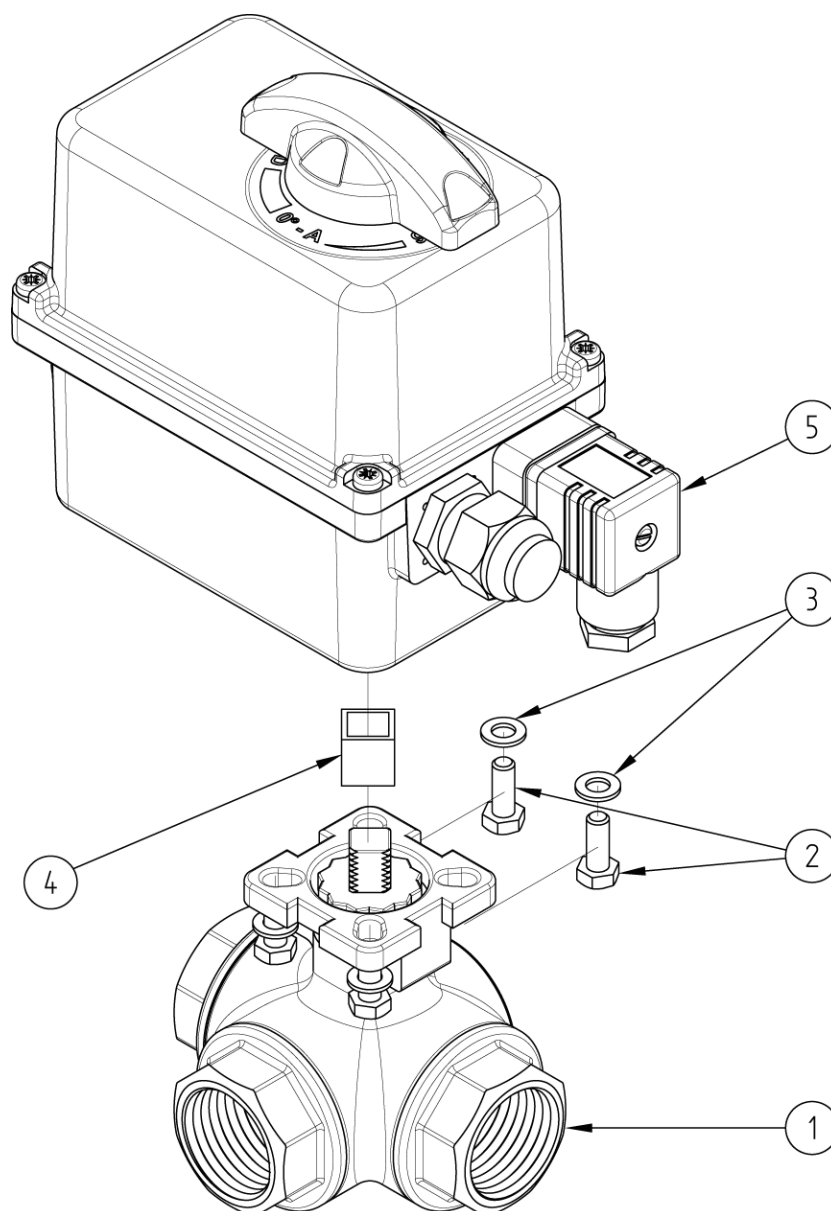
Visual position indicator

Anti-condensation heater



DN (mm)	NB (inches)	L1 (mm)	L2 (mm)	L3 (mm)	L4 (mm)	Opening/ closing time (90°) (s)	Weight (kg)	Part No. 100-230V AC and 100-350V DC	Opening/ closing time (90°) (s)	Part No. 15-30V AC and 12-48V DC
8	1/4"	79	194	136	92	11	1.55	450223-8A	11	450223-8B
10	3/8"	79	194	136	92	11	1.55	450223-10A	11	450223-10B
15	1/2"	79	194	136	92	11	1.55	450223-15A	11	450223-15B
20	3/4"	90	201	136	92	12	2.10	450223-20A	12	450223-20B
25	1"	108	212	136	92	12	2.60	450223-25A	12	450223-25B
32	1"1/4	124	215	136	92	26	3.50	450223-32A1	24	450223-32B1
32	1"1/4	124	239	151	128	7	4.60	450223-32A2	7	450223-32B2
40	1"1/2	135	226	136	92	26	4.60	450223-40A1	24	450223-40B1
40	1"1/2	135	250	151	128	7	5.70	450223-40A2	7	450223-40B2
50	2"	164	259	151	128	12	8.60	450223-50A	12	450223-50B

Electric actuator with plastic housing with IP66 protection rating.  
 Visual position indicator. Manual override control with safe clutch disengagement.  
 Configurable limit switches. Torque limiting device. Anti-condensation heater.  
 Actuator operating temperature: -10°C to +55°C.  
 Duty cycle: 50%. Number of starts per hour: 150.  
 Actuator sized for a valve  $\Delta P = \max.$  16 bar. For  $\Delta P > 16$  bar, please contact us.  
 Standard operation: Opening/closing at 0/90°.



N°	Part Name	Material	Quantity
1	3-WAY VALVE (58217)	CF8M	1
2	FIXING BOLT	STAINLESS STEEL	4
3	WASHER	STAINLESS STEEL	4
4	COUPLING	STAINLESS STEEL	0 or 1
5	ELECTRIC ACTUATOR (50840)	PLASTIC	1

You can refer to the following product data sheets for more technical information:

- **58217** : 3-way F/F/F valve - T-shaped bore
- **50840** : 1/4 turn (90°) electric actuator - IP66

**Béné Inox** – 11 chemin de la Pierre Blanche – 69800 SAINT-PRIEST – S.A.S with 240 000 € share capital – SIREN N° 311 810 287  
Tel. N°: +33 (0)4 78 90 48 22 – Fax N°: +33 (0)4 78 90 69 59 – [www.bene-inox.com](http://www.bene-inox.com) – [bene@bene-inox.com](mailto:bene@bene-inox.com)

Technical information, illustrations and photographs are provided for information only, they are not contractual. Some may vary according to the tolerances accepted in the profession and the applicable standards. All instructions for use, disassembly and maintenance are recommendations only. These could also vary depending on product usage conditions, its installation environment and purchaser requirements – of which the purchaser alone is responsible for their definition.