

Ball valves

Model 50174 3-part ball valve for socket welding (SW) (58471) and electric actuator IP68 with positioning unit (50846)



Specifications

⇒ Valve

Dimensions: DN20 to DN50 (3/4" to 2")

Connection: to be welded (socket welding)

Pressure: PN100 (1500 lbs)

Operating temperature: -29°C to +200°C

Material: 316 or CF8M stainless steel
(for the stainless steel parts that can come into contact with the transported fluid)

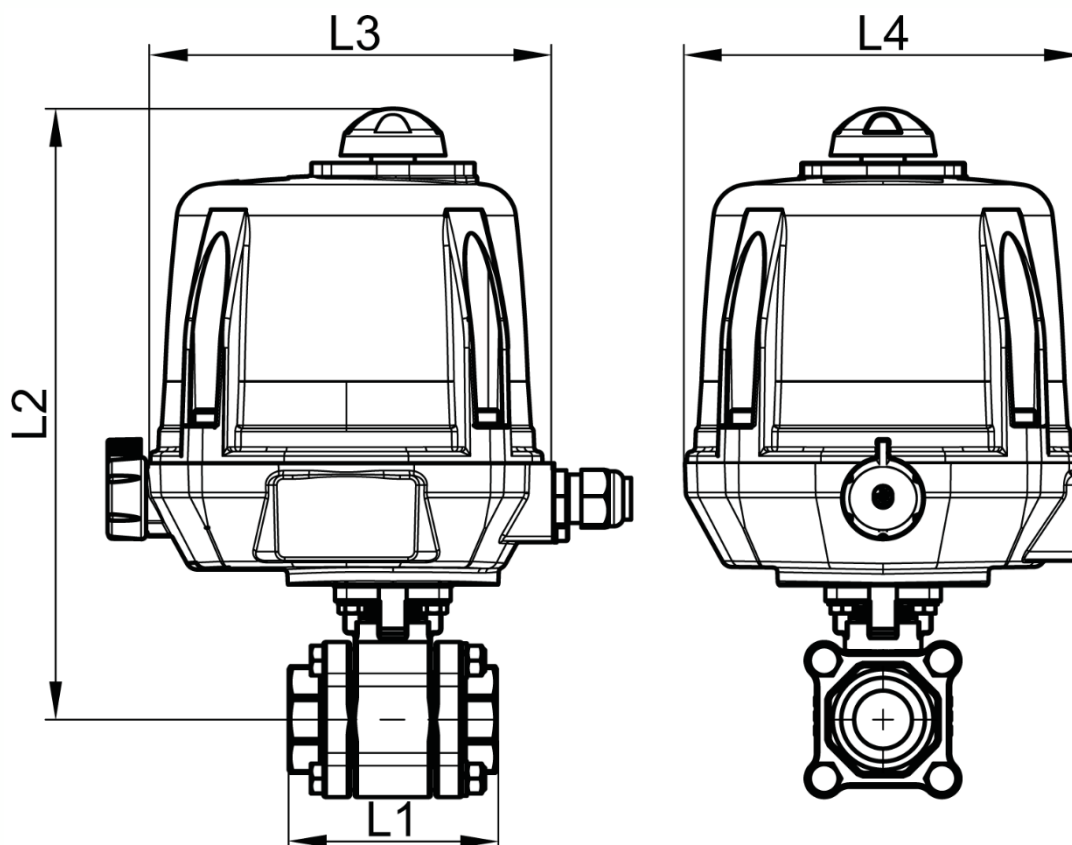
⇒ Electric actuator

Operating temperature: -20°C to +70°C

Aluminium housing and plastic cap IP68

Visual position indicator

Anti-condensation heater



DN (mm)	NB (inches)	L1 (mm)	L2 (mm)	L3 (mm)	L4 (mm)	Opening/ closing time (90°) (s)	Weight (kg)	Part No. 100-230V AC and 100-350V DC	Part No. 15-30V AC and 12-48V DC
20	3/4"	81	244	192	170	15	4.52	450174-20A	450174-20B
25	1"	90	251	192	170	15	4.97	450174-25A	450174-25B
32	1"1/4	110	259	192	170	15	5.60	450174-32A	450174-32B
40	1"1/2	122	264	192	170	15	6.50	450174-40A	450174-40B
50	2"	140	276	192	170	20	8.00	450174-50A	450174-50B

Electric actuator with aluminium housing and plastic cap with IP68 protection rating.

Visual position indicator. Manual override control with safe clutch disengagement.

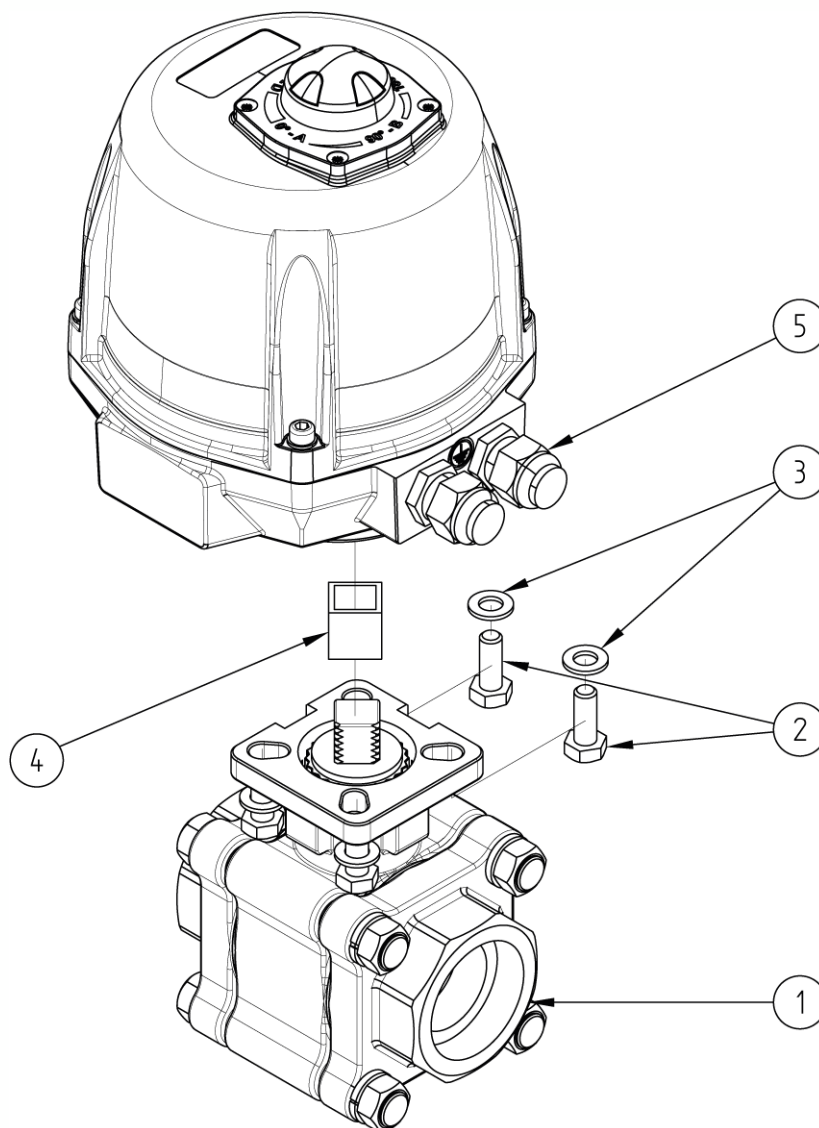
Configurable limit switches. Torque limiting device. Anti-condensation heater.

Actuator operating temperature: -20°C to +70°C.

Duty cycle: 50%. Number of starts per hour: 150.

Actuator sized for a valve $\Delta P = \max$. 16 bar. For $\Delta P > 16$ bar, please contact us.

Positioner version: The integrated positioning unit makes it possible to control the valve (opening/closing regulation) with a 4-20mA (or 0/10V) signal.



N°	Part Name	Material	Quantity
1	3-PART VALVE (58471)	CF8M	1
2	FIXING BOLT	STAINLESS STEEL	4
3	WASHER	STAINLESS STEEL	4
4	COUPLING	STAINLESS STEEL	0 or 1
5	ELECTRIC ACTUATOR (50846)	ALUMINIUM/PLASTIC	1

You can refer to the following product data sheets for more technical information:

- **58471** : 3-part valve to be socket welded (SW)
- **50846** : 1/4 turn (90°) electric actuator with 4/20mA positioning unit - IP68

Béné Inox – 11 chemin de la Pierre Blanche – 69800 SAINT-PRIEST – S.A.S with 240 000 € share capital – SIREN N° 311 810 287
Tel. N°: +33 (0)4 78 90 48 22 – Fax N°: +33 (0)4 78 90 69 59 – www.bene-inox.com – bene@bene-inox.com

Technical information, illustrations and photographs are provided for information only, they are not contractual. Some may vary according to the tolerances accepted in the profession and the applicable standards. All instructions for use, disassembly and maintenance are recommendations only. These could also vary depending on product usage conditions, its installation environment and purchaser requirements – of which the purchaser alone is responsible for their definition.