

Ball valves

Model 50160

**3-part ball valve for butt welding (BW)
(58472)
with fail-safe electric actuator IP66
(50841)**



Specifications

⇒ Valve

Dimensions: DN8 to DN50 (1/4" to 2")

Connection: to be welded (butt welding)

Pressure: PN100 (1500 lbs)

Operating temperature: -29°C to +200°C

Material: 316 or CF8M stainless steel
(for the stainless steel parts that can come into contact with the transported fluid)

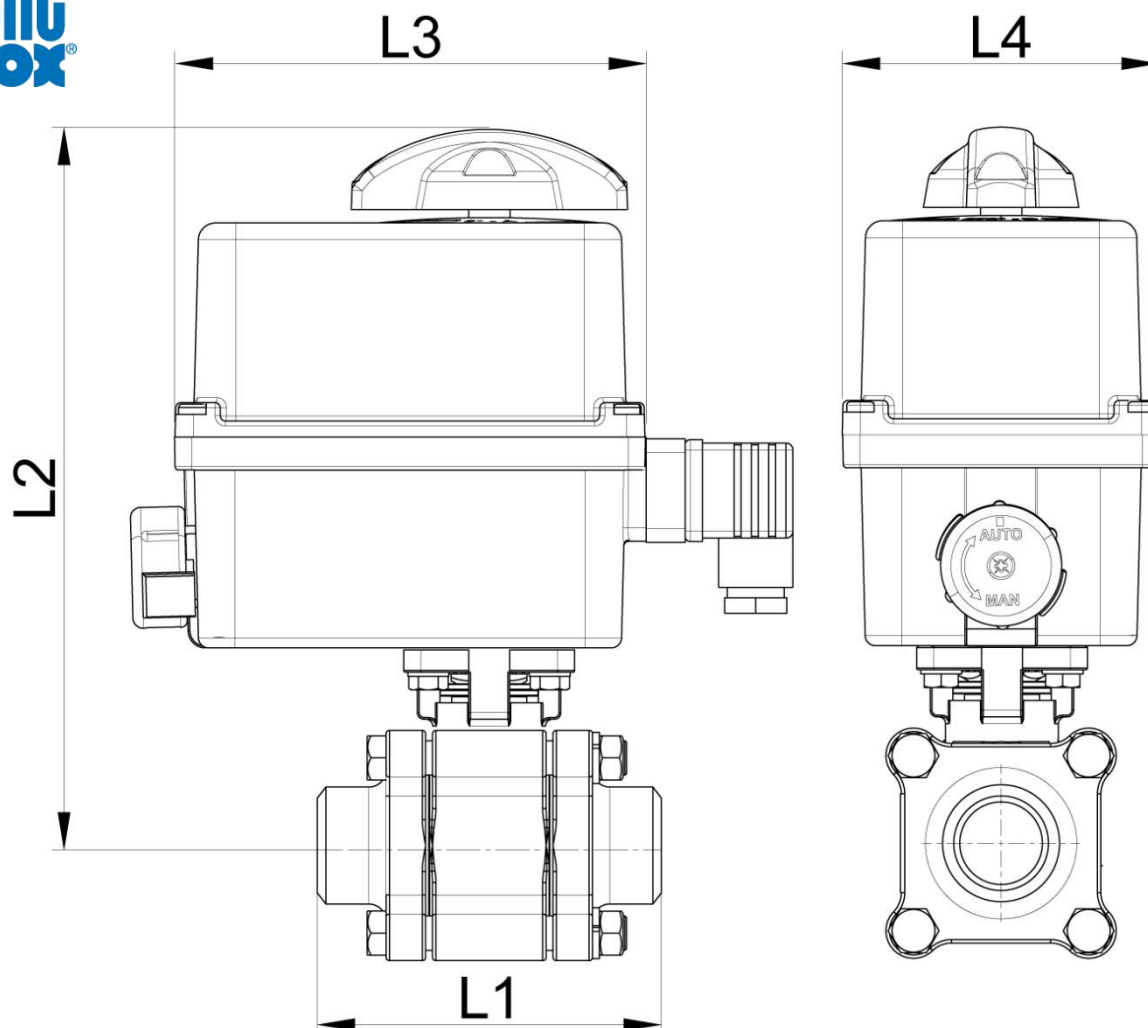
⇒ Electric actuator

Operating temperature: -10°C to +40°C

Plastic housing IP66

Visual position indicator

Self-regulating anti-condensation heater



DN (mm)	NB (inches)	L1 (mm)	L2 (mm)	L3 (mm)	L4 (mm)	Opening/ closing time (90°) (s)	Weight (kg)	Part No. 100-230V AC and 100-350V DC	Opening/ closing time (90°) (s)	Part No. 15-30V AC and 12-48V DC
8	1/4"	70	195	136	92	12	1.85	450160-8A	12	450160-8B
10	3/8"	70	195	136	92	12	1.92	450160-10A	12	450160-10B
15	1/2"	75	195	136	92	12	1.98	450160-15A	12	450160-15B
20	3/4"	92	195	136	92	12	2.22	450160-20A	12	450160-20B
25	1"	100	226	151	128	7	3.77	450160-25A	12	450160-25B
32	1 1/4"	110	234	151	128	7	4.40	450160-32A	7	450160-32B
40	1 1/2"	125	239	151	128	12	5.30	450160-40A	12	450160-40B
50	2"	150	251	151	128	23	6.80	450160-50A	22	450160-50B

Electric actuator with plastic housing with IP66 protection rating.

Visual position indicator. Manual override control with safe clutch disengagement.

Configurable limit switches. Torque limiting device. Anti-condensation heater.

Actuator operating temperature: -10°C to +55°C (except for the fail-safe version: -10°C to +40°C).

Duty cycle: 50%. Number of starts per hour: 150.

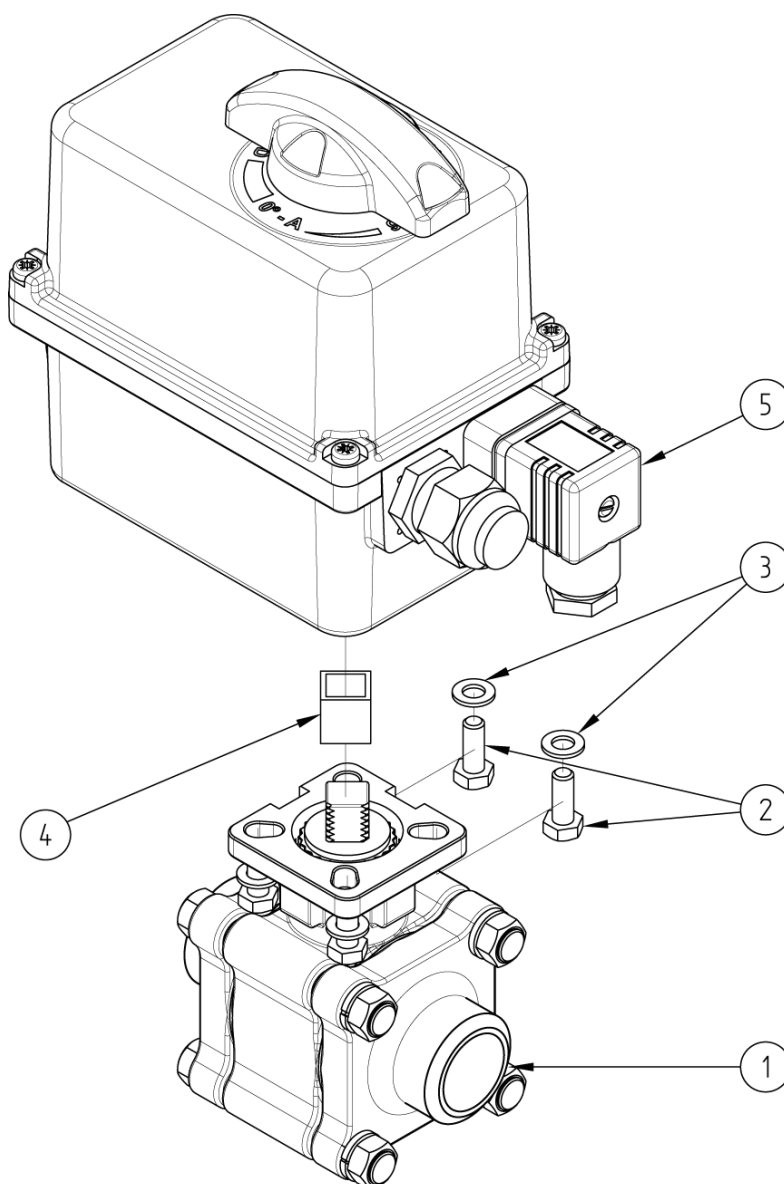
Actuator sized for a valve $\Delta P = \max$. 16 bar. For $\Delta P > 16$ bar, please contact us.

Fail-safe version: The internal fail-safe backup unit (circuit board + battery) makes sure that the valve returns to the closed position if there is a power cut.

Bénéinox – 11 chemin de la Pierre Blanche – 69800 SAINT-PRIEST – S.A.S with 240 000 € share capital – SIREN N° 311 810 287

Tel. N°: +33 (0)4 78 90 48 22 – Fax N°: +33 (0)4 78 90 69 59 – www.bene-inox.com – bene@bene-inox.com

Technical information, illustrations and photographs are provided for information only, they are not contractual. Some may vary according to the tolerances accepted in the profession and the applicable standards. All instructions for use, disassembly and maintenance are recommendations only. These could also vary depending on product usage conditions, its installation environment and purchaser requirements – of which the purchaser alone is responsible for their definition.



N°	Part Name	Material	Quantity
1	3-PART VALVE (58472)	CF8M	1
2	FIXING BOLT	STAINLESS STEEL	4
3	WASHER	STAINLESS STEEL	4
4	COUPLING	STAINLESS STEEL	0 or 1
5	ELECTRIC ACTUATOR (50841)	PLASTIC	1

You can refer to the following product data sheets for more technical information:

- **58472** : 3-part valve to be butt welded (BW)
- **50841** : Fail-safe ¼ turn (90°) electric actuator - IP66

Béné Inox – 11 chemin de la Pierre Blanche – 69800 SAINT-PRIEST – S.A.S with 240 000 € share capital – SIREN N° 311 810 287
Tel. N°: +33 (0)4 78 90 48 22 – Fax N°: +33 (0)4 78 90 69 59 – www.bene-inox.com – bene@bene-inox.com

Technical information, illustrations and photographs are provided for information only, they are not contractual. Some may vary according to the tolerances accepted in the profession and the applicable standards. All instructions for use, disassembly and maintenance are recommendations only. These could also vary depending on product usage conditions, its installation environment and purchaser requirements – of which the purchaser alone is responsible for their definition.