

# Ball valves

## Model 50155 3-part F/F ball valve (58463) with electric actuator IP66 (50840)



### Specifications

#### ⇒ Valve

**Dimensions:** DN8 to DN50 (1/4" to 2")

**Connection:** BSP female thread

**Pressure:** PN100 (1500 lbs)

**Operating temperature:** -29°C to +200°C

**Material:** 316 or CF8M stainless steel  
(for the stainless steel parts that can come into contact with the transported fluid)

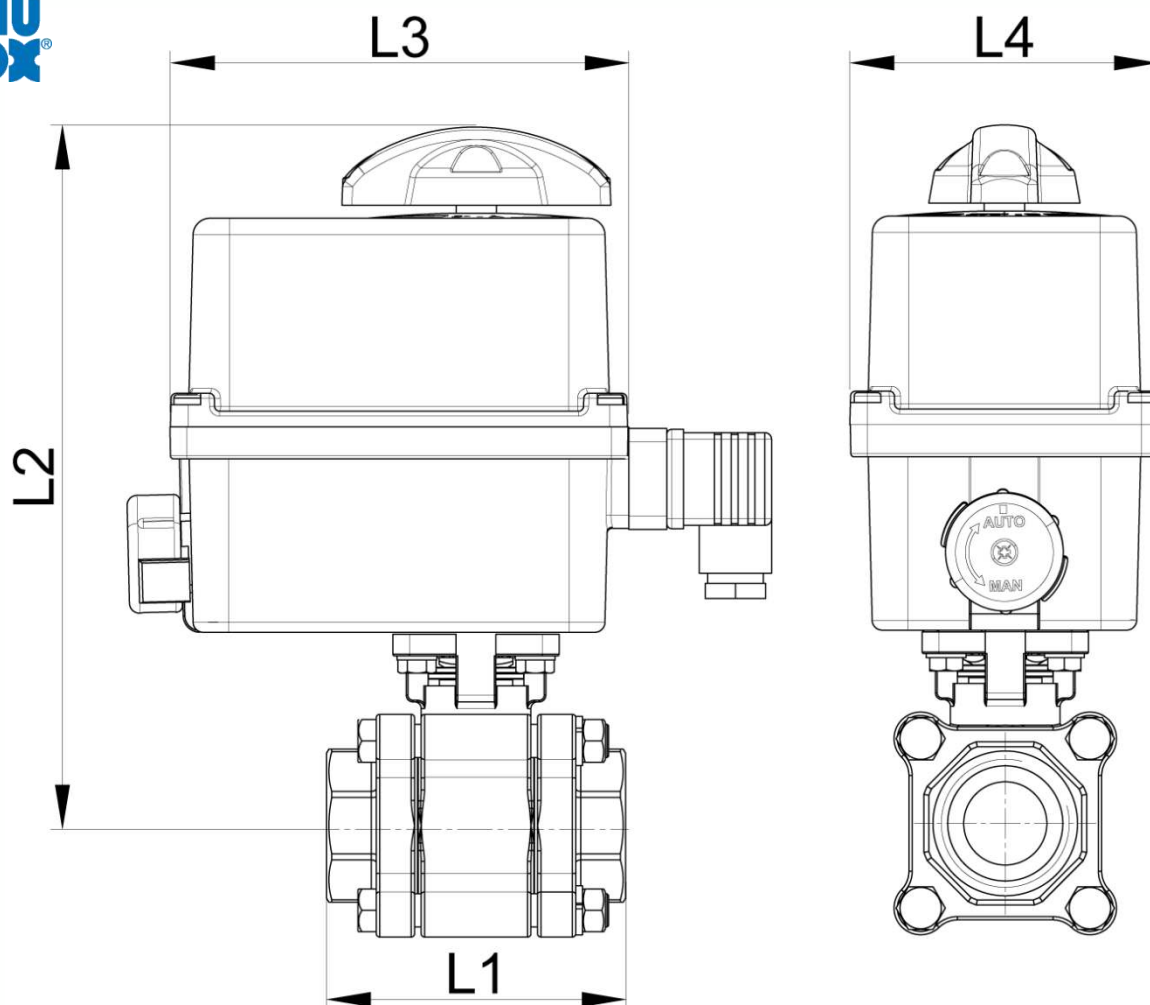
#### ⇒ Electric actuator

**Operating temperature:** -10°C to +55°C

Plastic housing IP66

Visual position indicator

Self-regulating anti-condensation heater



DN (mm)	NB (inches)	L1 (mm)	L2 (mm)	L3 (mm)	L4 (mm)	Opening/ closing time (90°) (s)	Weight (kg)	Part No. 100-230V AC and 100-350V DC	Opening/ closing time (90°) (s)	Part No. 15-30V AC and 12-48V DC
8	1/4"	75	195	136	92	12	1.65	450155-8A	11	450155-8B
10	3/8"	75	195	136	92	12	1.72	450155-10A	11	450155-10B
15	1/2"	75	195	136	92	12	1.78	450155-15A	11	450155-15B
20	3/4"	81	195	136	92	12	2.02	450155-20A	12	450155-20B
25	1"	90	202	136	92	26	2.47	450155-25A1	24	450155-25B1
25	1"	90	226	151	128	7	3.57	450155-25A2	7	450155-25B2
32	1 1/4"	110	210	136	92	26	3.10	450155-32A1	24	450155-32B1
32	1 1/4"	110	234	151	128	7	4.20	450155-32A2	7	450155-32B2
40	1 1/2"	122	239	151	128	12	5.10	450155-40A	12	450155-40B
50	2"	140	251	151	128	23	6.60	450155-50A	22	450155-50B

Electric actuator with plastic housing with IP66 protection rating.

Visual position indicator. Manual override control with safe clutch disengagement.

Configurable limit switches. Torque limiting device. Anti-condensation heater.

Actuator operating temperature: -10°C to +55°C (except for the fail-safe version: -10°C to +40°C).

Duty cycle: 50%. Number of starts per hour: 150.

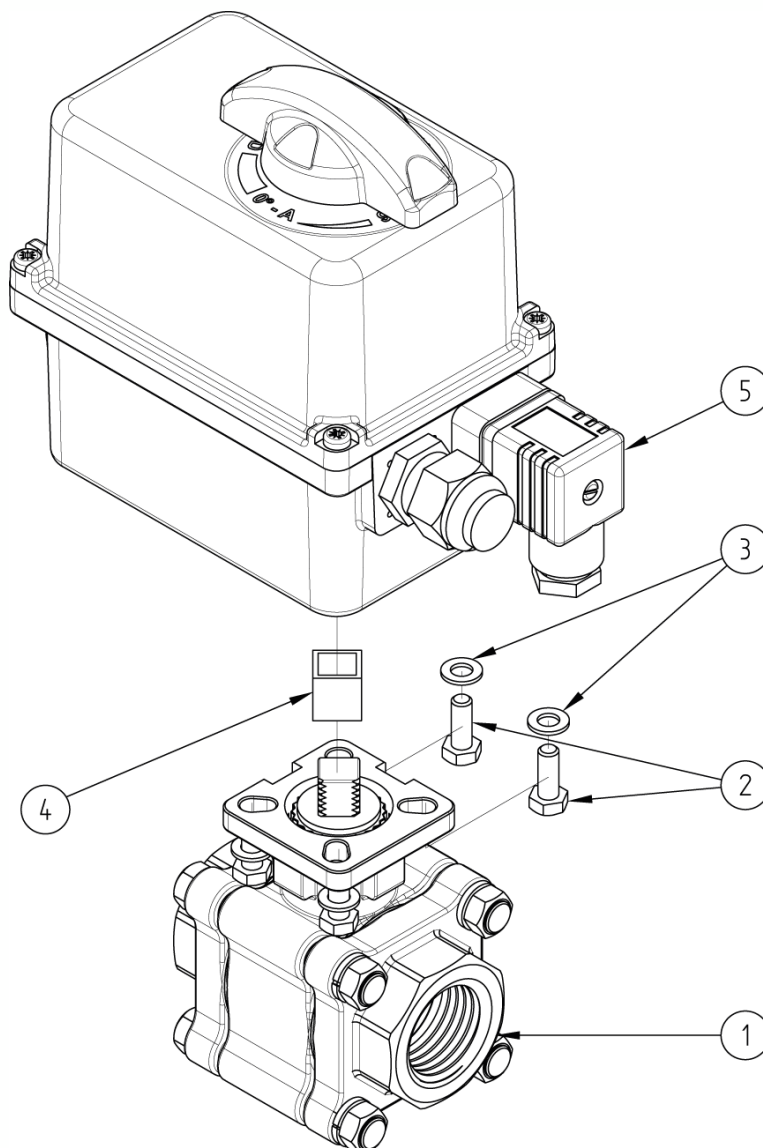
Actuator sized for a valve  $\Delta P = \max.$  16 bar. For  $\Delta P > 16$  bar, please contact us.

Standard operation: Opening/closing at 0/90°.

**Béné Inox** – 11 chemin de la Pierre Blanche – 69800 SAINT-PRIEST – S.A.S with 240 000 € share capital – SIREN N° 311 810 287

Tel. N°: +33 (0)4 78 90 48 22 – Fax N°: +33 (0)4 78 90 69 59 – [www.bene-inox.com](http://www.bene-inox.com) – [bene@bene-inox.com](mailto:bene@bene-inox.com)

Technical information, illustrations and photographs are provided for information only, they are not contractual. Some may vary according to the tolerances accepted in the profession and the applicable standards. All instructions for use, disassembly and maintenance are recommendations only. These could also vary depending on product usage conditions, its installation environment and purchaser requirements – of which the purchaser alone is responsible for their definition.



N°	Part Name	Material	Quantity
1	3-PART VALVE (58463)	CF8M	1
2	FIXING BOLT	STAINLESS STEEL	4
3	WASHER	STAINLESS STEEL	4
4	COUPLING	STAINLESS STEEL	0 or 1
5	ELECTRIC ACTUATOR (50840)	PLASTIC	1

You can refer to the following product data sheets for more technical information:

- **58463** : 3-part female/female valve
- **50840** : 1/4 turn (90°) electric actuator - IP66

**Béné Inox** – 11 chemin de la Pierre Blanche – 69800 SAINT-PRIEST – S.A.S with 240 000 € share capital – SIREN N° 311 810 287  
Tel. N°: +33 (0)4 78 90 48 22 – Fax N°: +33 (0)4 78 90 69 59 – [www.bene-inox.com](http://www.bene-inox.com) – [bene@bene-inox.com](mailto:bene@bene-inox.com)

Technical information, illustrations and photographs are provided for information only, they are not contractual. Some may vary according to the tolerances accepted in the profession and the applicable standards. All instructions for use, disassembly and maintenance are recommendations only. These could also vary depending on product usage conditions, its installation environment and purchaser requirements – of which the purchaser alone is responsible for their definition.