

Ball valves

Model 50147 3-part ball valve for socket welding (SW) (5847I) with electric actuator IP65 (50835)



Specifications

⇒ Valve

Dimensions: DN8 to DN50 (1/4" to 2")

Connection: to be welded (socket welding)

Pressure: PN100 (1500 lbs)

Operating temperature: -29°C to +200°C

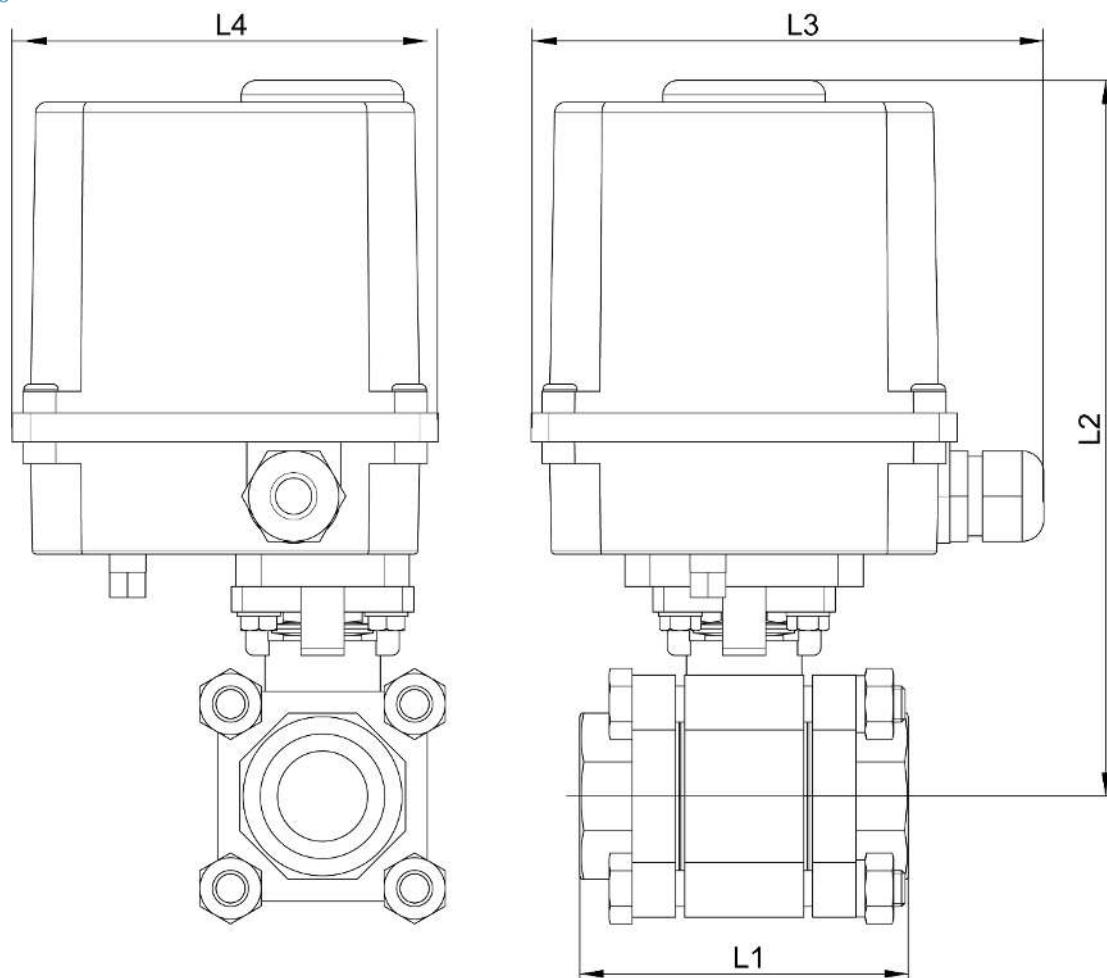
Material: 316 or CF8M stainless steel

(for the stainless steel parts that can come into contact with the transported fluid)

⇒ Electric actuator

Operating temperature: -10°C to +50°C

Material: Plastic

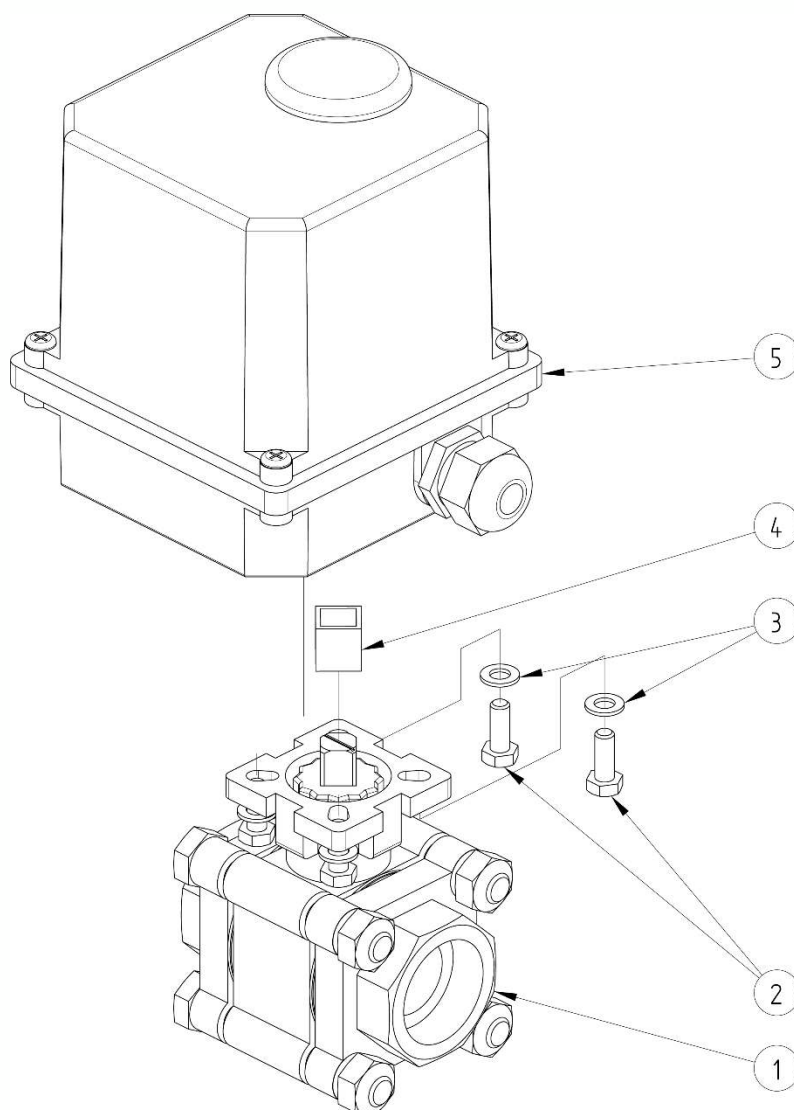


DN (mm)	NB (inches)	L1 (mm)	L2 (mm)	L3 (mm)	L4 (mm)	Opening/closing time (s)	Weight (kg)	Part No. 230V 50Hz
8	1/4"	75	186	143	118	10	2.25	450147-8A
10	3/8"	75	186	143	118	10	2.32	450147-10A
15	1/2"	75	186	143	118	10	2.38	450147-15A
20	3/4"	81	186	143	118	10	2.62	450147-20A
25	1"	90	193	143	118	10	3.07	450147-25A
32	1 1/4"	110	201	143	118	10	3.70	450147-32A
40	1 1/2"	122	206	143	118	10	4.60	450147-40A
50	2"	140	242	204	165	8	8.70	450147-50A

DN (mm)	NB (inches)	Opening/closing time (s)	Part No. 24V 50Hz	Opening/closing time (s)	Part No. 24V DC
8	1/4"	15	450147-8B	16	450147-8C
10	3/8"	15	450147-10B	16	450147-10C
15	1/2"	15	450147-15B	16	450147-15C
20	3/4"	15	450147-20B	16	450147-20C
25	1"	15	450147-25B	16	450147-25C
32	1 1/4"	15	450147-32B	16	450147-32C
40	1 1/2"	15	450147-40B	16	450147-40C

Béné Inox – 11 chemin de la Pierre Blanche – 69800 SAINT-PRIEST – S.A.S with 240 000 € share capital – SIREN N° 311 810 287
Tel. N°: +33 (0)4 78 90 48 22 – Fax N°: +33 (0)4 78 90 69 59 – www.bene-inox.com – bene@bene-inox.com

Technical information, illustrations and photographs are provided for information only, they are not contractual. Some may vary according to the tolerances accepted in the profession and the applicable standards. All instructions for use, disassembly and maintenance are recommendations only. These could also vary depending on product usage conditions, its installation environment and purchaser requirements – of which the purchaser alone is responsible for their definition.



N°	Part Name	Material	Quantity
1	3-PART VALVE (58471)	CF8M	1
2	FIXING BOLT	STAINLESS STEEL	4
3	WASHER	STAINLESS STEEL	4
4	COUPLING	STAINLESS STEEL	0 or 1
5	ELECTRIC ACTUATOR (50835)	PLASTIC	1

You can refer to the following product data sheets for more technical information:

- **58471** : 3-part valve to be welded (socket welding)
- **50835** : Electric actuator