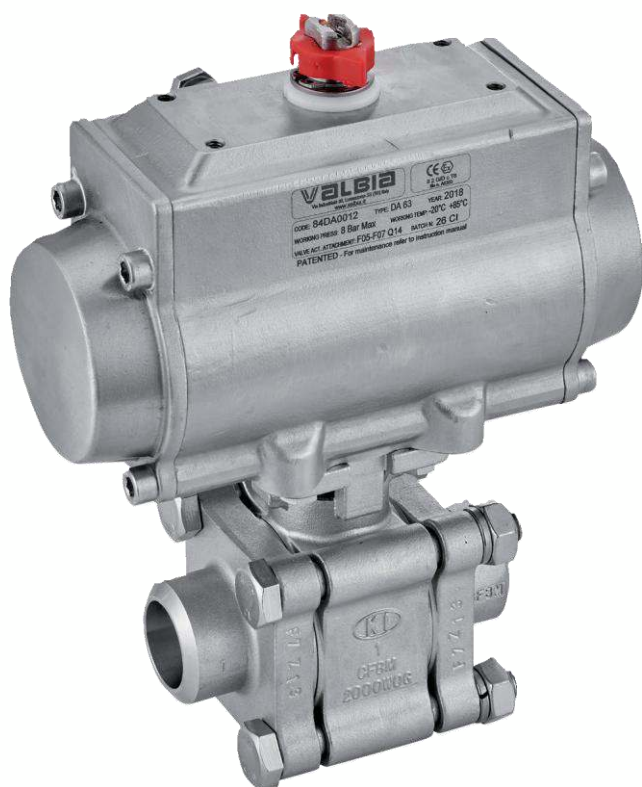


# Ball valves

## Model 50145 3-part ball valve for butt welding (BW) (58472) with stainless steel pneumatic actuator (50802)



### Specifications

#### ⇒ Valve

**Dimensions:** DN8 to DN50 (1/4" to 2")

**Connection:** to be welded (butt welding)

**Pressure:** PN100 (1500 lbs)

**Operating temperature:** -29°C to +200°C

**Material:** 316 or CF8M stainless steel

(for the stainless steel parts that can come into contact with the transported fluid)

#### ⇒ Pneumatic actuator

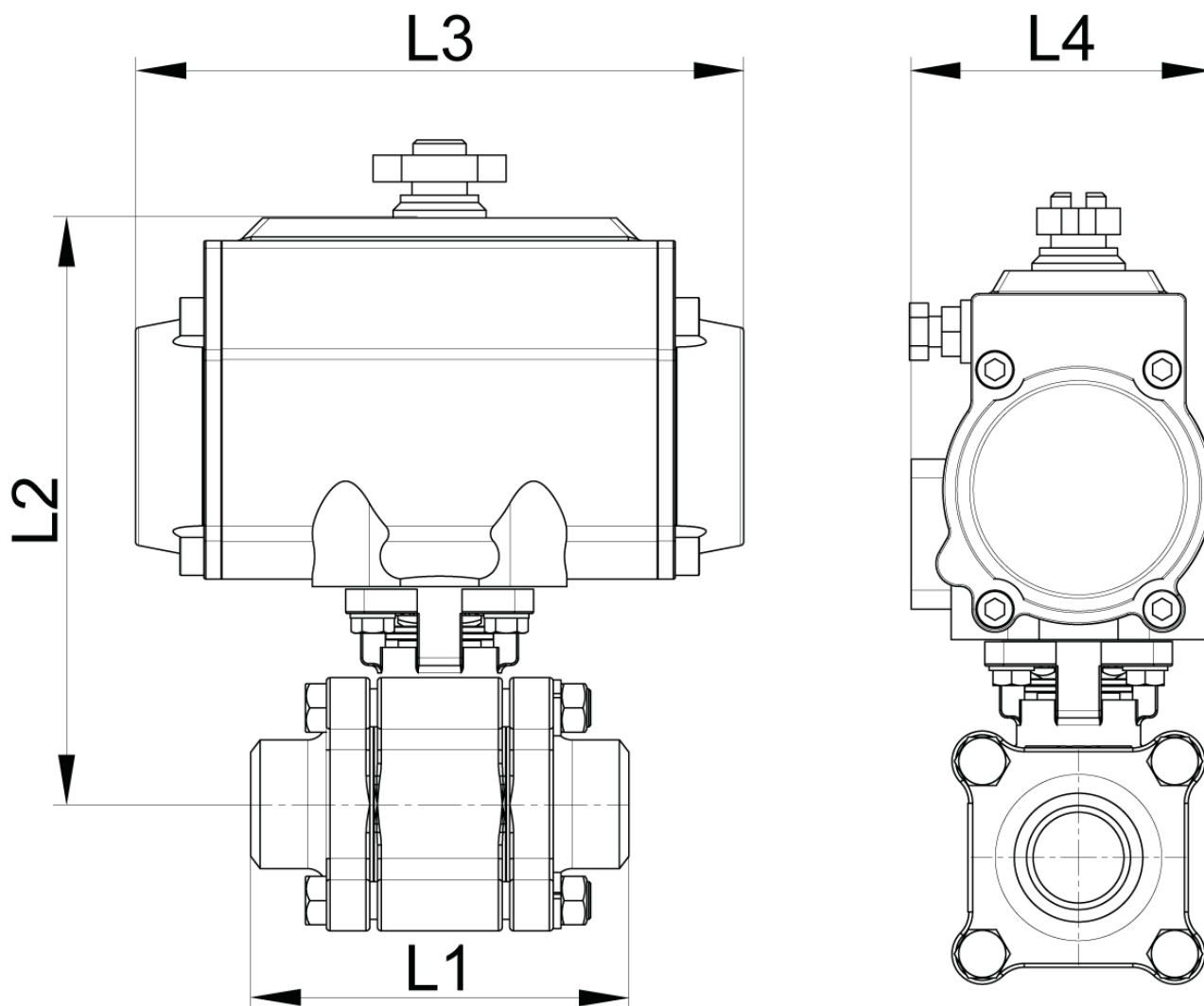
**Air connection:** 1/8" (VP50 to VP88) or

1/4" (VP100 to VP200)

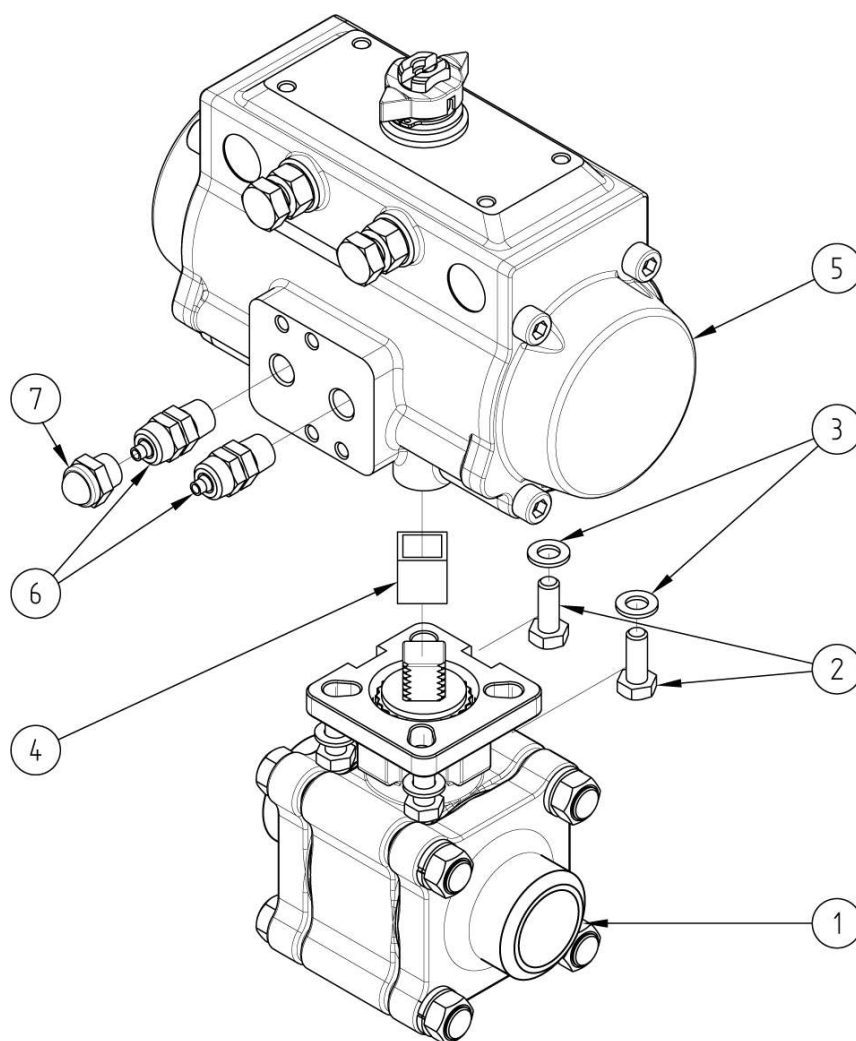
**Operating pressure:** 6 to 8 bar

**Operating temperature:** -20°C to +85°C

**Material:** Stainless steel



DN (mm)	NB (inches)	L1 (mm)	L2 (mm)	L3 (mm)	L4 (mm)	Weight (kg)	Spring return Part No.	Double- acting type Part No.
8	1/4"	70	129	141	71	3.05	450145-8SE	450145-8DE
10	3/8"	70	129	141	71	3.12	450145-10SE	450145-10DE
15	1/2"	75	129	141	71	3.18	450145-15SE	450145-15DE
20	3/4"	92	140	164	81	4.42	450145-20SE	-
20	3/4"	92	129	141	71	3.42	-	450145-20DE
25	1"	100	147	164	81	4.87	450145-25SE	450145-25DE
32	1"1/4	110	155	164	81	5.50	450145-32SE	450145-32DE
40	1"1/2	125	179	210	95	8.50	450145-40SE	450145-40DE
50	2"	150	191	210	95	10.00	450145-50SE	450145-50DE



N°	Part Name	Material	Quantity
1	3-PART VALVE (58472)	CF8M	1
2	FIXING BOLT	STAINLESS STEEL	4
3	WASHER	STAINLESS STEEL	4
4	COUPLING	STAINLESS STEEL	0 or 1
5	PNEUMATIC ACTUATOR (50802)	STAINLESS STEEL	1
6	CAPPED PNEUMATIC CONNECTOR	NICKEL-PLATED BRASS	1 (SE*) or 2 (DE**)
7	EXHAUST SILENCER	NICKEL-PLATED BRASS	1 (SE*)

\*Spring return pneumatic actuator \*\*Double-acting type pneumatic actuator

You can refer to the following product data sheets for more technical information:

- **58472** : 3-part ball valve to be butt welded (BW)
- **50802SE** : Spring return pneumatic actuator
- **50802DE** : Double-acting type pneumatic actuator

**Béné Inox** – 11 chemin de la Pierre Blanche – 69800 SAINT-PRIEST – S.A.S with 240 000 € share capital – SIREN N° 311 810 287  
Tel. N°: +33 (0)4 78 90 48 22 – Fax N°: +33 (0)4 78 90 69 59 – [www.bene-inox.com](http://www.bene-inox.com) – [bene@bene-inox.com](mailto:bene@bene-inox.com)

Technical information, illustrations and photographs are provided for information only, they are not contractual. Some may vary according to the tolerances accepted in the profession and the applicable standards. All instructions for use, disassembly and maintenance are recommendations only. These could also vary depending on product usage conditions, its installation environment and purchaser requirements – of which the purchaser alone is responsible for their definition.