

Ball valves

Model 50115 3-part F/F ball valve (58183) and ATEX electric actuator IP68 with positioning unit (50850)



Specifications

⇒ Valve

Dimensions: DN20 to DN100 (3/4" to 4")

Connection: BSP female thread

Pressure: PN63 (1000 lbs)

Operating temperature: -29°C to +175°C

Material: 316 or CF8M stainless steel
(for the stainless steel parts that can come into contact with the transported fluid)

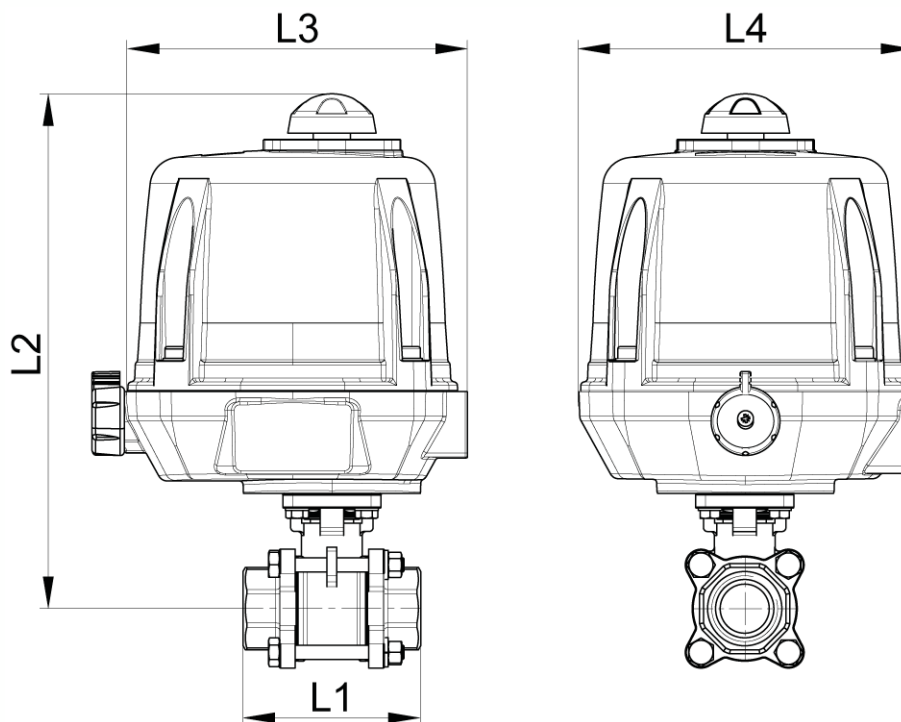
⇒ Electric actuator

Operating temperature: -20°C to +70°C

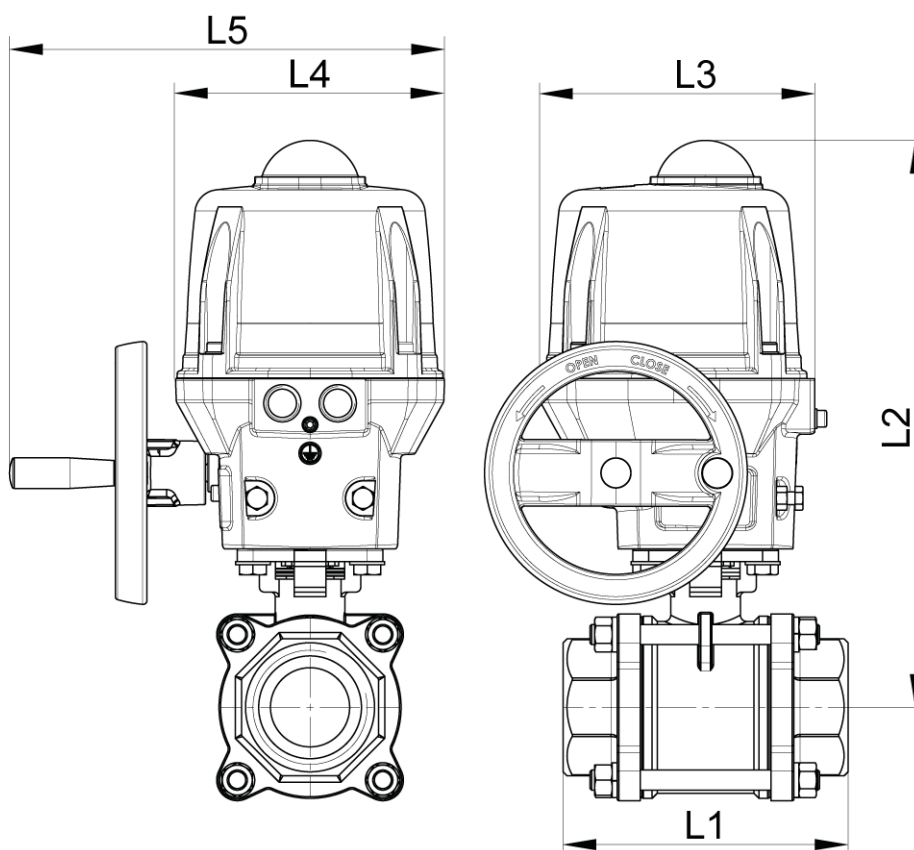
Aluminium housing and cap IP68

Visual position indicator

Anti-condensation heater



DN20 to DN50



DN65 to DN100

Béné Inox – 11 chemin de la Pierre Blanche – 69800 SAINT-PRIEST – S.A.S with 240 000 € share capital – SIREN N° 311 810 287
Tel. N°: +33 (0)4 78 90 48 22 – Fax N°: +33 (0)4 78 90 69 59 – www.bene-inox.com – bene@bene-inox.com

Technical information, illustrations and photographs are provided for information only, they are not contractual. Some may vary according to the tolerances accepted in the profession and the applicable standards. All instructions for use, disassembly and maintenance are recommendations only. These could also vary depending on product usage conditions, its installation environment and purchaser requirements – of which the purchaser alone is responsible for their definition.

| DN (mm) | NB (inches) | L1 (mm) | L2 (mm) | L3 (mm) | L4 (mm) | L5 (mm) | Opening/ closing time (90°) (s) | Weight (kg) | Part No. 100-230V AC and 100-350V DC | Part No. 15-30V AC and 12-48V DC |
|------------|----------------|------------|------------|------------|------------|------------|---------------------------------------|----------------|---|---|
| 20 | 3/4" | 80 | 250 | 192 | 170 | x | 15 | 4.32 | 450115-20A | 450115-20B |
| 25 | 1" | 90 | 260 | 192 | 170 | x | 15 | 4.77 | 450115-25A | 450115-25B |
| 32 | 1"1/4 | 110 | 264 | 192 | 170 | x | 15 | 5.40 | 450115-32A | 450115-32B |
| 40 | 1"1/2 | 120 | 273 | 192 | 170 | x | 15 | 6.25 | 450115-40A | 450115-40B |
| 50 | 2" | 140 | 279 | 192 | 170 | x | 20 | 7.90 | 450115-50A | 450115-50B |
| 65 | 2"1/2 | 185 | 358 | 209 | 170 | 275 | 15 | 14.00 | 450115-65A | 450115-65B |
| 80 | 3" | 205 | 367 | 209 | 170 | 275 | 30 | 17.30 | 450115-80A | 450115-80B |
| 100 | 4" | 240 | 398 | 209 | 170 | 275 | 60 | 29.10 | 450115-100A | 450115-100B |

ATEX 1/4 turn (90°) electric actuator with aluminium housing and cap IP68.

Visual position indicator. Manual override control with safe clutch disengagement.

Configurable limit switches. Torque limiting device. Anti-condensation heater.

Actuator operating temperature: -20°C to +70°C.

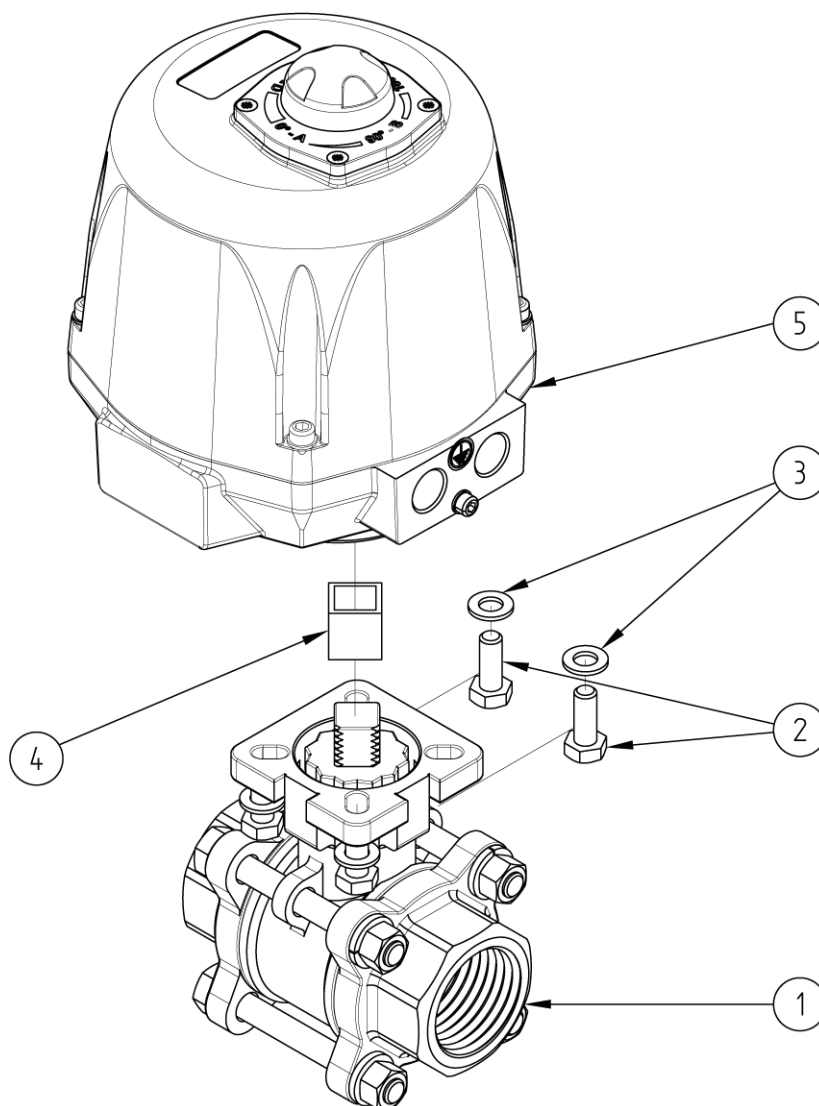
Duty cycle: 50%. Number of starts per hour: 150.

Actuator sized for a valve $\Delta P = \max$. 16 bar. For $\Delta P > 16$ bar, please contact us.

Positioner version: The integrated positioning unit makes it possible to control the valve (opening/closing regulation) with a 4-20mA (or 0/10V) signal.

You must order earthing braids separately.

Cable glands are not supplied.



| N° | Part Name | Material | Quantity |
|----|---------------------------|-----------------|----------|
| 1 | 3-PART VALVE (58183) | CF8M | 1 |
| 2 | FIXING BOLT | STAINLESS STEEL | 4 |
| 3 | WASHER | STAINLESS STEEL | 4 |
| 4 | COUPLING | STAINLESS STEEL | 0 or 1 |
| 5 | ELECTRIC ACTUATOR (50850) | ALUMINIUM | 1 |

You can refer to the following product data sheets for more technical information:

- **58183** : 3-part female/female valve
- **50850** : ATEX 1/4 turn (90°) electric actuator with 4/20mA positioning unit - IP68

Béné Inox – 11 chemin de la Pierre Blanche – 69800 SAINT-PRIEST – S.A.S with 240 000 € share capital – SIREN N° 311 810 287
Tel. N°: +33 (0)4 78 90 48 22 – Fax N°: +33 (0)4 78 90 69 59 – www.bene-inox.com – bene@bene-inox.com

Technical information, illustrations and photographs are provided for information only, they are not contractual. Some may vary according to the tolerances accepted in the profession and the applicable standards. All instructions for use, disassembly and maintenance are recommendations only. These could also vary depending on product usage conditions, its installation environment and purchaser requirements – of which the purchaser alone is responsible for their definition.