

# Ball valves

## Model 50114 3-part ball valve for butt welding (BW) (58192) with fail-safe ATEX electric actuator IP68 (50849)



### Specifications

#### ⇒ Valve

**Dimensions:** DN20 to DN100 (3/4" to 4")

**Connection:** to be welded (butt welding)

**Pressure:** PN63 (1000 lbs)

**Operating temperature:** -29°C to +175°C

**Material:** 316 or CF8M stainless steel  
(for the stainless steel parts that can come into contact with the transported fluid)

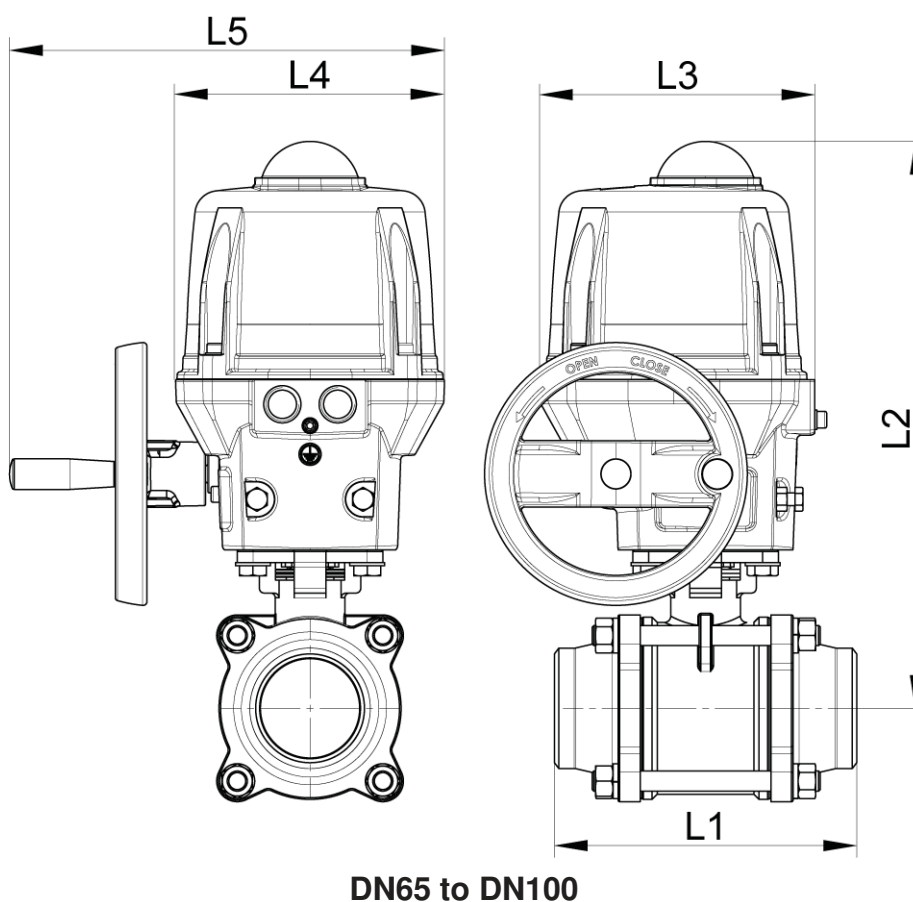
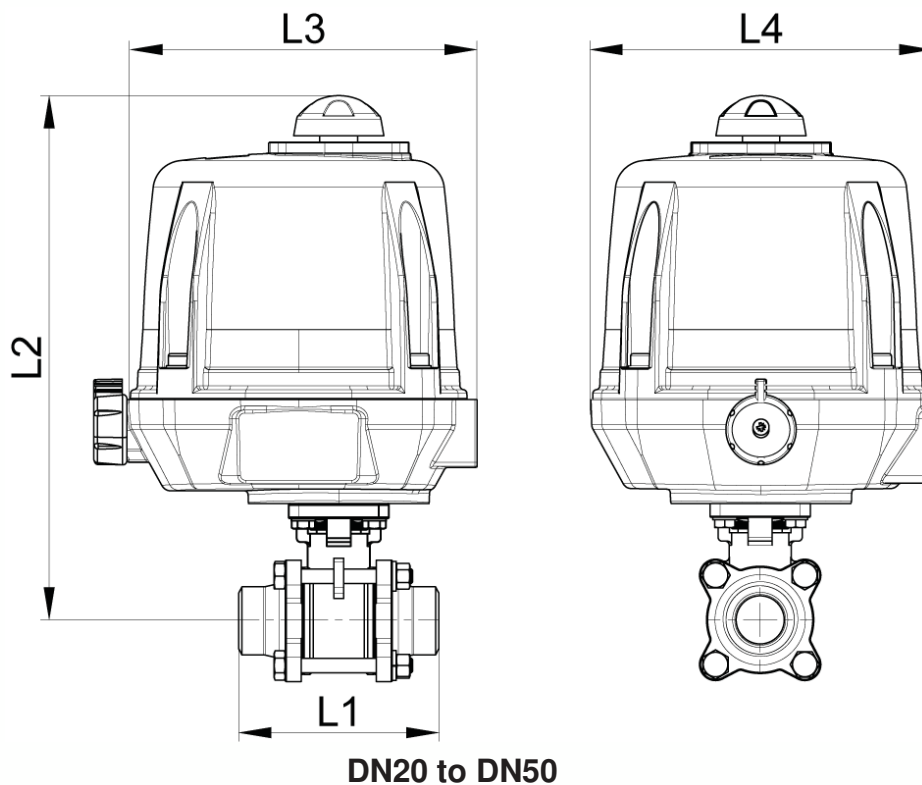
#### ⇒ Electric actuator

**Operating temperature:** -10°C to +40°C

Aluminium housing and cap IP68

Visual position indicator

Anti-condensation heater



**Béné Inox** – 11 chemin de la Pierre Blanche – 69800 SAINT-PRIEST – S.A.S with 240 000 € share capital – SIREN N° 311 810 287  
Tel. N°: +33 (0)4 78 90 48 22 – Fax N°: +33 (0)4 78 90 69 59 – [www.bene-inox.com](http://www.bene-inox.com) – [bene@bene-inox.com](mailto:bene@bene-inox.com)

Technical information, illustrations and photographs are provided for information only, they are not contractual. Some may vary according to the tolerances accepted in the profession and the applicable standards. All instructions for use, disassembly and maintenance are recommendations only. These could also vary depending on product usage conditions, its installation environment and purchaser requirements – of which the purchaser alone is responsible for their definition.

DN (mm)	NB (inches)	L1 (mm)	L2 (mm)	L3 (mm)	L4 (mm)	L5 (mm)	Opening/ closing time (90°) (s)	Weight (kg)	Part No. 100-230V AC and 100-350V DC	Part No. 15-30V AC and 12-48V DC
20	3/4"	90	250	192	170	x	7	5.22	450114-20A	450114-20B
25	1"	100	260	192	170	x	7	5.67	450114-25A	450114-25B
32	1"1/4	110	264	192	170	x	7	6.30	450114-32A	450114-32B
40	1"1/2	125	273	192	170	x	15	7.15	450114-40A	450114-40B
50	2"	150	279	192	170	x	15	8.80	450114-50A	450114-50B
65	2"1/2	190	358	209	170	275	15	14.90	450114-65A	450114-65B
80	3"	220	367	209	170	275	15	18.20	450114-80A	450114-80B
100	4"	270	398	209	170	275	30	30.00	450114-100A	450114-100B

ATEX 1/4 turn (90°) electric actuator with aluminium housing and cap IP68.

Visual position indicator. Manual override control with safe clutch disengagement.

Configurable limit switches. Torque limiting device. Anti-condensation heater.

Actuator operating temperature: -10°C to +40°C.

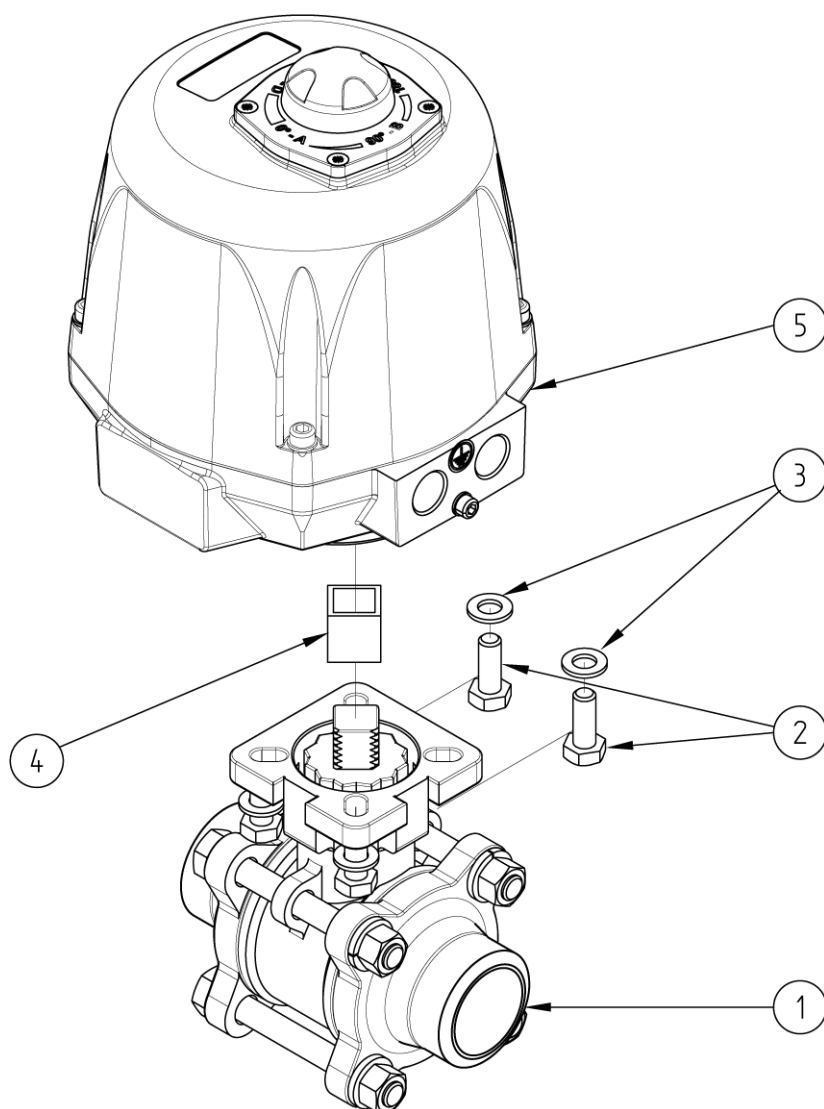
Duty cycle: 50%. Number of starts per hour: 150.

Actuator sized for a valve  $\Delta P = \max$ . 16 bar. For  $\Delta P > 16$  bar, please contact us.

Fail-safe version: The internal fail-safe backup unit (circuit board + battery) makes sure that the valve returns to the closed position if there is a power cut.

You must order earthing braids separately.

Cable glands are not supplied.



N°	Part Name	Material	Quantity
1	3-PART VALVE (58192)	CF8M	1
2	FIXING BOLT	STAINLESS STEEL	4
3	WASHER	STAINLESS STEEL	4
4	COUPLING	STAINLESS STEEL	0 or 1
5	ELECTRIC ACTUATOR (50849)	ALUMINIUM	1

You can refer to the following product data sheets for more technical information:

- **58192** : 3-part ball valve to be butt welded (BW)
- **50849** : Fail-safe ATEX 1/4 turn (90°) electric actuator - IP68

**Béné Inox** – 11 chemin de la Pierre Blanche – 69800 SAINT-PRIEST – S.A.S with 240 000 € share capital – SIREN N° 311 810 287  
Tel. N°: +33 (0)4 78 90 48 22 – Fax N°: +33 (0)4 78 90 69 59 – [www.bene-inox.com](http://www.bene-inox.com) – [bene@bene-inox.com](mailto:bene@bene-inox.com)

Technical information, illustrations and photographs are provided for information only, they are not contractual. Some may vary according to the tolerances accepted in the profession and the applicable standards. All instructions for use, disassembly and maintenance are recommendations only. These could also vary depending on product usage conditions, its installation environment and purchaser requirements – of which the purchaser alone is responsible for their definition.