

Ball valves

Model 50109 3-part F/F ball valve (58183) with ATEX electric actuator IP68 (50848)



Specifications

⇒ Valve

Dimensions: DN20 to DN100 (3/4" to 4")

Connection: BSP female thread

Pressure: PN63 (1000 lbs)

Operating temperature: -29°C to +175°C

Material: 316 or CF8M stainless steel
(for the stainless steel parts that can come into contact with the transported fluid)

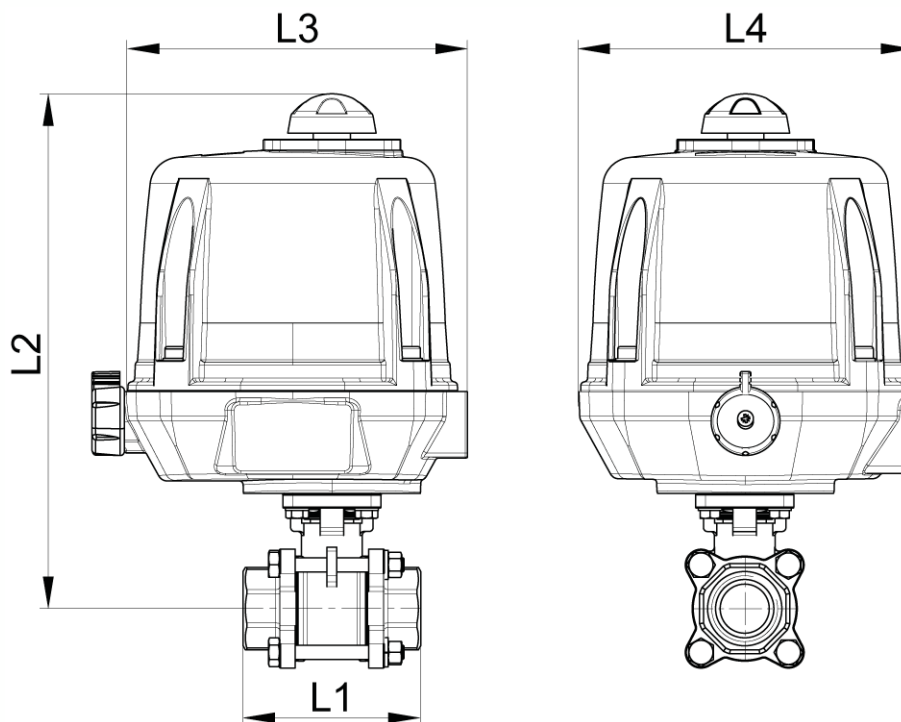
⇒ Electric actuator

Operating temperature: -20°C to +70°C

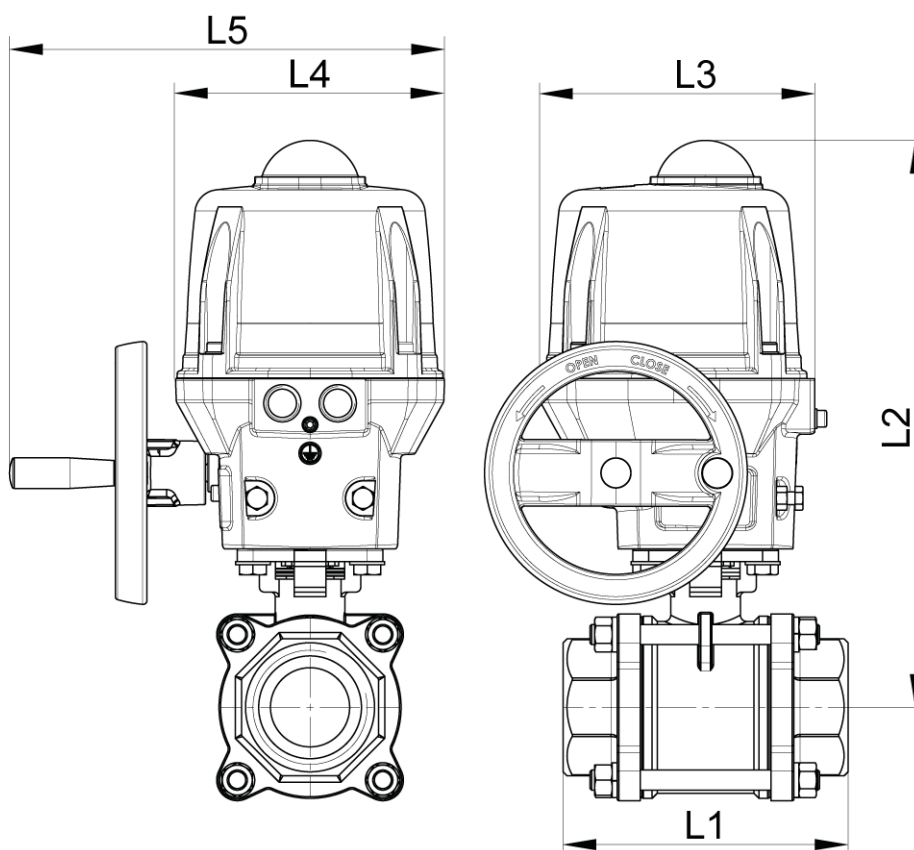
Aluminium housing and cap IP68

Visual position indicator

Anti-condensation heater



DN20 to DN50



DN65 to DN100

Béné Inox – 11 chemin de la Pierre Blanche – 69800 SAINT-PRIEST – S.A.S with 240 000 € share capital – SIREN N° 311 810 287
Tel. N°: +33 (0)4 78 90 48 22 – Fax N°: +33 (0)4 78 90 69 59 – www.bene-inox.com – bene@bene-inox.com

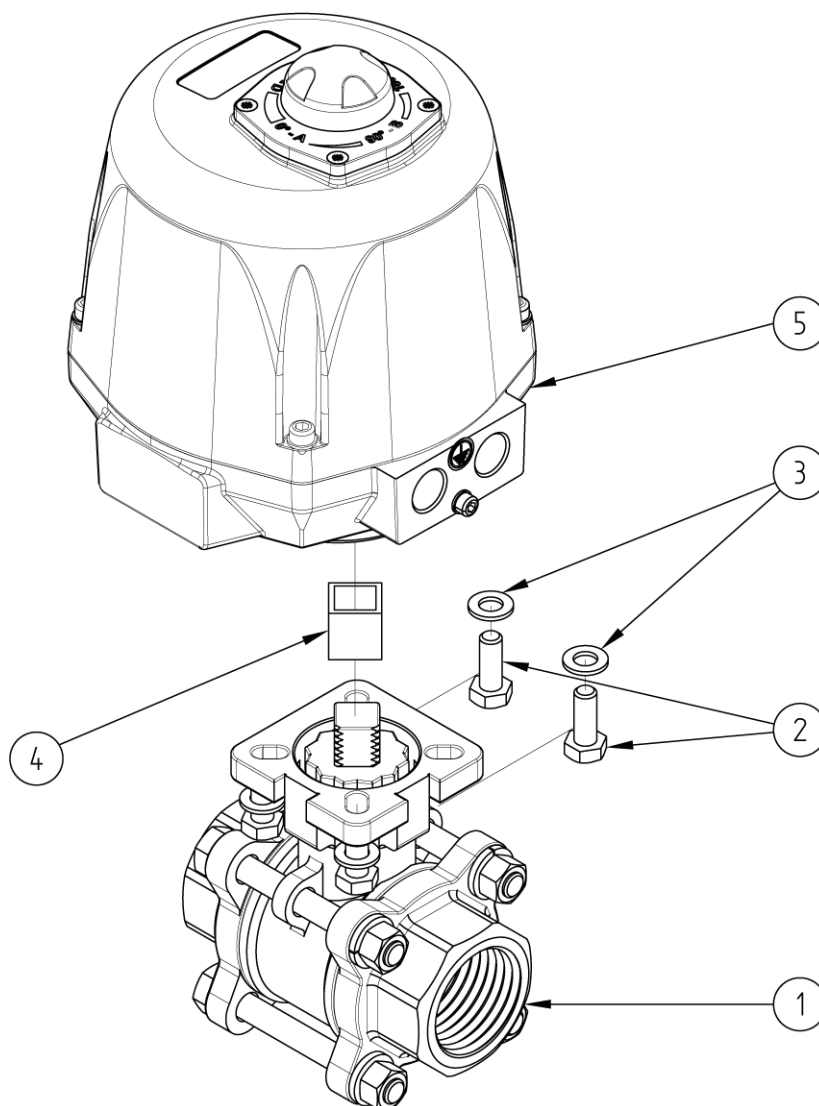
Technical information, illustrations and photographs are provided for information only, they are not contractual. Some may vary according to the tolerances accepted in the profession and the applicable standards. All instructions for use, disassembly and maintenance are recommendations only. These could also vary depending on product usage conditions, its installation environment and purchaser requirements – of which the purchaser alone is responsible for their definition.

DN (mm)	NB (inches)	L1 (mm)	L2 (mm)	L3 (mm)	L4 (mm)	L5 (mm)	Opening/ closing time (90°) (s)	Weight (kg)	Part No. 100-230V AC and 100-350V DC
20	3/4"	80	250	192	170	x	7	5.02	450109-20A
25	1"	90	260	192	170	x	7	5.47	450109-25A
32	1"1/4	110	264	192	170	x	7	6.10	450109-32A
40	1"1/2	120	273	192	170	x	15	6.95	450109-40A
50	2"	140	279	192	170	x	15	8.60	450109-50A
65	2"1/2	185	358	209	170	275	15	14.70	450109-65A
80	3"	205	367	209	170	275	15	18.00	450109-80A
100	4"	240	398	209	170	275	30	29.80	450109-100A

DN (mm)	NB (inches)	Opening/ closing time (90°) (s)	Part No. 15-30V AC and 12-48V DC	Opening/ closing time (90°) (s)	Part No. 400V TRI 50/60 Hz
20	3/4"	7	450109-20B	10	450109-20C
25	1"	7	450109-25B	10	450109-25C
32	1"1/4	7	450109-32B	10	450109-32C
40	1"1/2	15	450109-40B	10	450109-40C
50	2"	15	450109-50B	10	450109-50C
65	2"1/2	15	450109-65B	10	450109-65C
80	3"	15	450109-80B	10	450109-80C
100	4"	30	450109-100B	20	450109-100C

ATEX 1/4 turn (90°) electric actuator with aluminium housing and cap IP68.
 Visual position indicator. Manual override control with safe clutch disengagement.
 Configurable limit switches. Torque limiting device. Anti-condensation heater.
 Actuator operating temperature: -20°C to +70°C.
 Duty cycle: 50%. Number of starts per hour: 150.
 Actuator sized for a valve $\Delta P = \max. 16 \text{ bar}$. For $\Delta P > 16 \text{ bar}$, please contact us.
 Standard operation: Opening/closing at 0/90°.

You must order earthing braids separately.
 Cable glands are not supplied.



N°	Part Name	Material	Quantity
1	3-PART VALVE (58183)	CF8M	1
2	FIXING BOLT	STAINLESS STEEL	4
3	WASHER	STAINLESS STEEL	4
4	COUPLING	STAINLESS STEEL	0 or 1
5	ELECTRIC ACTUATOR (50848)	ALUMINIUM	1

You can refer to the following product data sheets for more technical information:

- **58183** : 3-part female/female valve
- **50848** : ATEX 1/4 turn (90°) electric actuator - IP68

Béné Inox – 11 chemin de la Pierre Blanche – 69800 SAINT-PRIEST – S.A.S with 240 000 € share capital – SIREN N° 311 810 287
Tel. N°: +33 (0)4 78 90 48 22 – Fax N°: +33 (0)4 78 90 69 59 – www.bene-inox.com – bene@bene-inox.com

Technical information, illustrations and photographs are provided for information only, they are not contractual. Some may vary according to the tolerances accepted in the profession and the applicable standards. All instructions for use, disassembly and maintenance are recommendations only. These could also vary depending on product usage conditions, its installation environment and purchaser requirements – of which the purchaser alone is responsible for their definition.