

Ball valves

Model 50105 3-part ball valve for butt welding (BW) (58192) and electric actuator IP68 with positioning unit (50846)



Specifications

⇒ Valve

Dimensions: DN20 to DN100 (3/4" to 4")

Connection: to be welded (butt welding)

Pressure: PN63 (1000 lbs)

Operating temperature: -29°C to +175°C

Material: 316 or CF8M stainless steel
(for the stainless steel parts that can come into contact with the transported fluid)

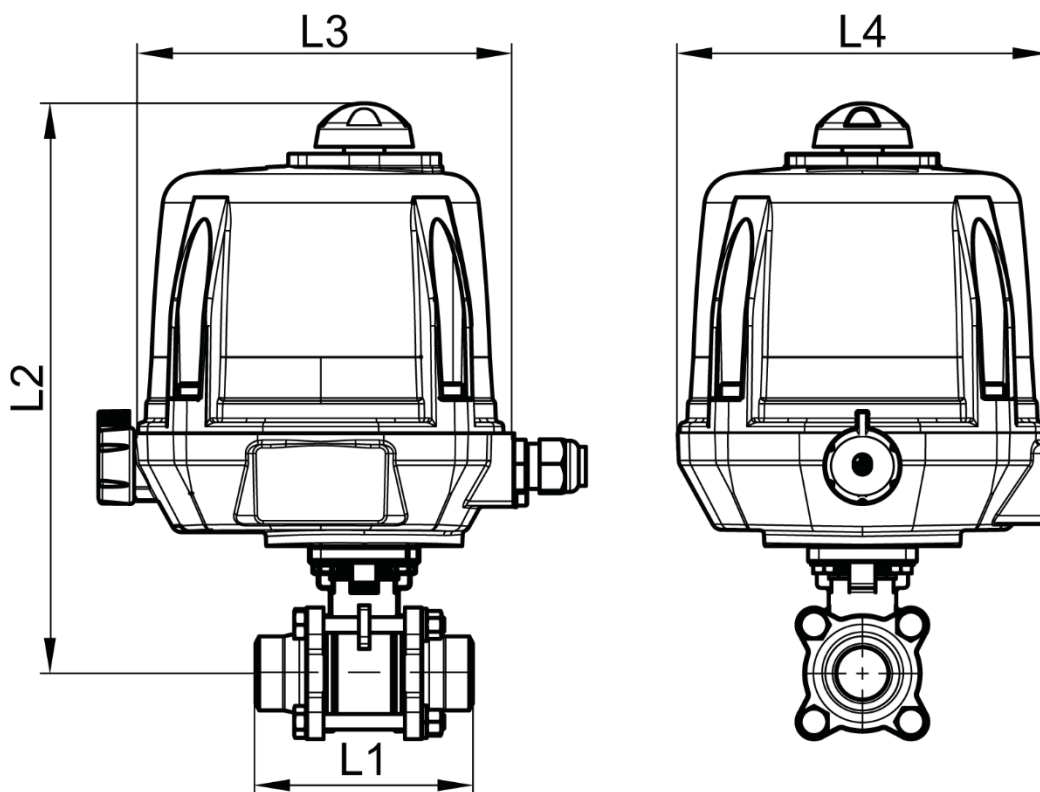
⇒ Electric actuator

Operating temperature: -20°C to +70°C

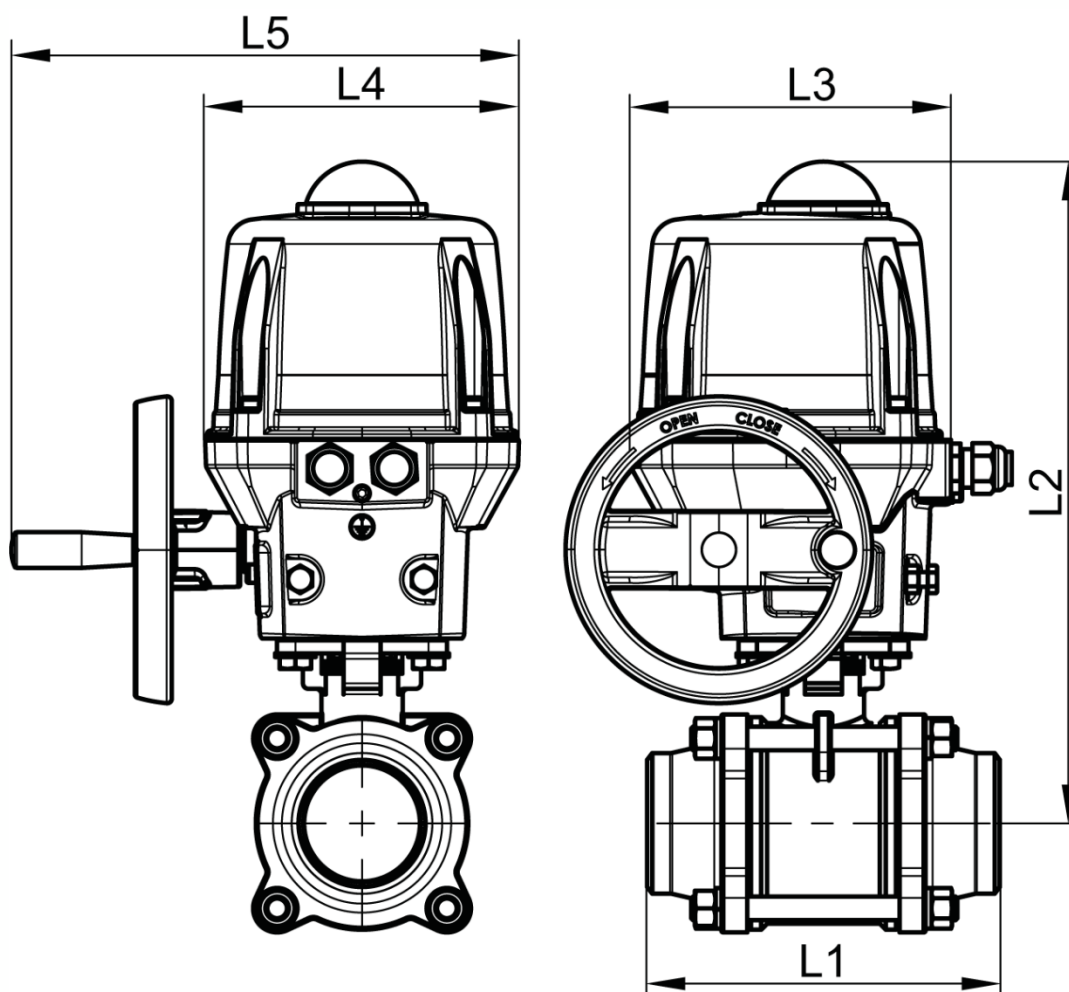
Aluminium housing and plastic cap IP68

Visual position indicator

Anti-condensation heater



DN20 to DN50



DN65 to DN100

Béné Inox – 11 chemin de la Pierre Blanche – 69800 SAINT-PRIEST – S.A.S with 240 000 € share capital – SIREN N° 311 810 287
Tel. N°: +33 (0)4 78 90 48 22 – Fax N°: +33 (0)4 78 90 69 59 – www.bene-inox.com – bene@bene-inox.com

Technical information, illustrations and photographs are provided for information only, they are not contractual. Some may vary according to the tolerances accepted in the profession and the applicable standards. All instructions for use, disassembly and maintenance are recommendations only. These could also vary depending on product usage conditions, its installation environment and purchaser requirements – of which the purchaser alone is responsible for their definition.

DN (mm)	NB (inches)	L1 (mm)	L2 (mm)	L3 (mm)	L4 (mm)	L5 (mm)	Opening/ closing time (90°) (s)	Weight (kg)	Part No. 100-230V AC and 100-350V DC	Part No. 15-30V AC and 12-48V DC
20	3/4"	90	250	192	170	x	15	4.32	450105-20A	450105-20B
25	1"	100	260	192	170	x	15	4.77	450105-25A	450105-25B
32	1"1/4	110	264	192	170	x	15	5.40	450105-32A	450105-32B
40	1"1/2	125	273	192	170	x	15	6.25	450105-40A	450105-40B
50	2"	150	279	192	170	x	20	7.90	450105-50A	450105-50B
65	2"1/2	190	358	209	170	275	15	14.00	450105-65A	450105-65B
80	3"	220	367	209	170	275	30	17.30	450105-80A	450105-80B
100	4"	270	398	209	170	275	60	29.10	450105-100A	450105-100B

Electric actuator with aluminium housing and plastic cap with IP68 protection rating.

Visual position indicator. Manual override control with safe clutch disengagement.

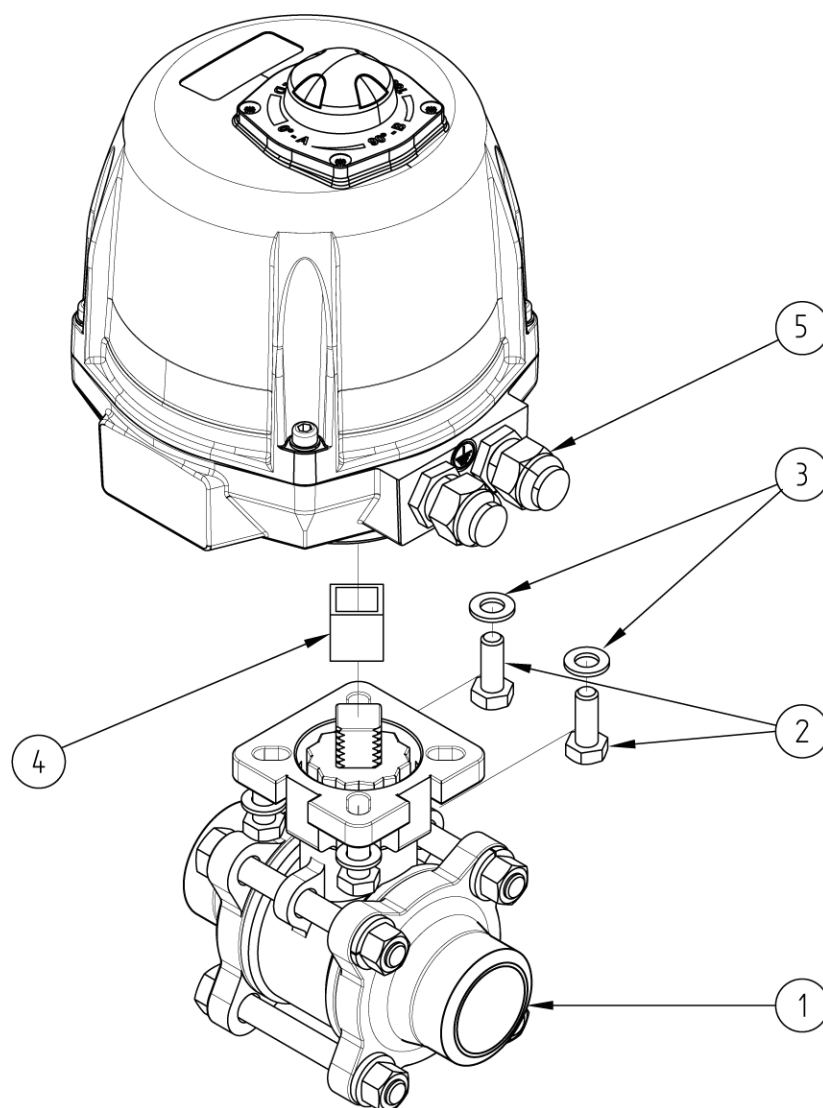
Configurable limit switches. Torque limiting device. Anti-condensation heater.

Actuator operating temperature: -20°C to +70°C.

Duty cycle: 50%. Number of starts per hour: 150.

Actuator sized for a valve $\Delta P = \max$. 16 bar. For $\Delta P > 16$ bar, please contact us.

Positioner version: The integrated positioning unit makes it possible to control the valve (opening/closing regulation) with a 4-20mA (or 0/10V) signal.



N°	Part Name	Material	Quantity
1	3-PART VALVE (58192)	CF8M	1
2	FIXING BOLT	STAINLESS STEEL	4
3	WASHER	STAINLESS STEEL	4
4	COUPLING	STAINLESS STEEL	0 or 1
5	ELECTRIC ACTUATOR (50846)	ALUMINIUM/PLASTIC	1

You can refer to the following product data sheets for more technical information:

- **58192** : 3-part valve to be welded (butt welding)
- **50846** : 1/4 turn (90°) electric actuator with 4/20mA positioning unit - IP68

Béné Inox – 11 chemin de la Pierre Blanche – 69800 SAINT-PRIEST – S.A.S with 240 000 € share capital – SIREN N° 311 810 287
Tel. N°: +33 (0)4 78 90 48 22 – Fax N°: +33 (0)4 78 90 69 59 – www.bene-inox.com – bene@bene-inox.com

Technical information, illustrations and photographs are provided for information only, they are not contractual. Some may vary according to the tolerances accepted in the profession and the applicable standards. All instructions for use, disassembly and maintenance are recommendations only. These could also vary depending on product usage conditions, its installation environment and purchaser requirements – of which the purchaser alone is responsible for their definition.