

Ball valves

Model 50099

**3-part ball valve for butt welding (BW)
(58192) with electric actuator IP68 (50844)**



Specifications

⇒ Valve

Dimensions: DN20 to DN100 (3/4" to 4")

Connection: to be welded (butt welding)

Pressure: PN63 (1000 lbs)

Operating temperature: -29°C to +175°C

Material: 316 or CF8M stainless steel
(for the stainless steel parts that can come into contact with the transported fluid)

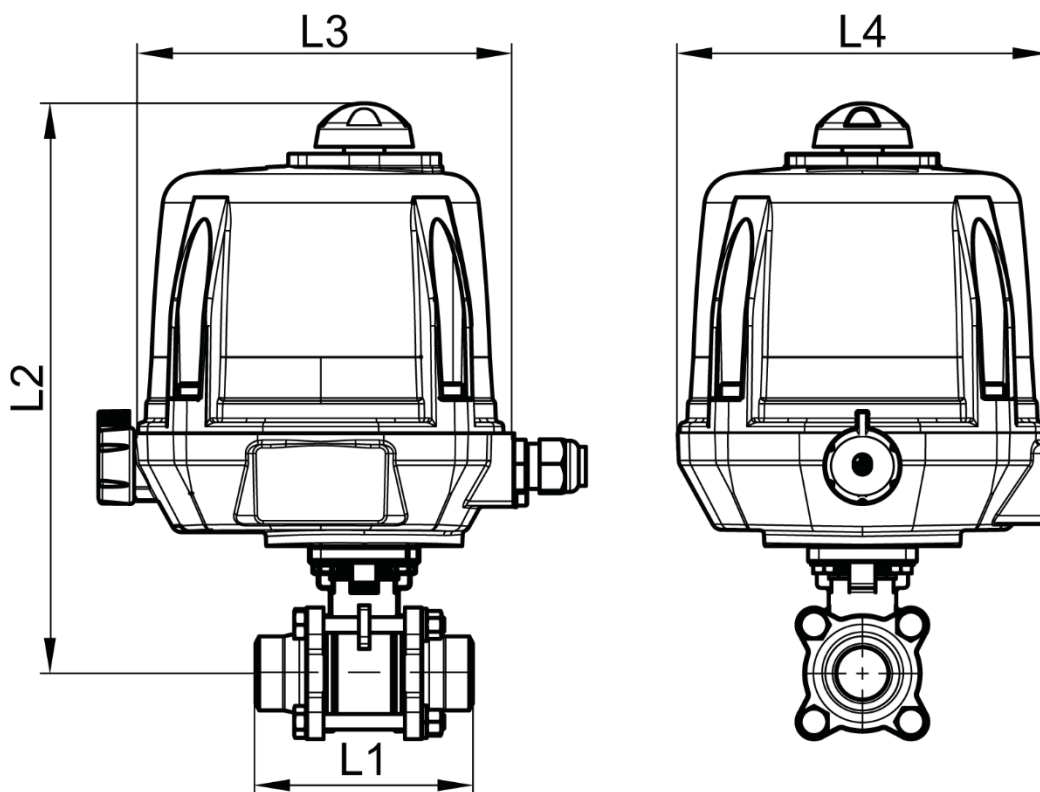
⇒ Electric actuator

Operating temperature: -20°C to +70°C

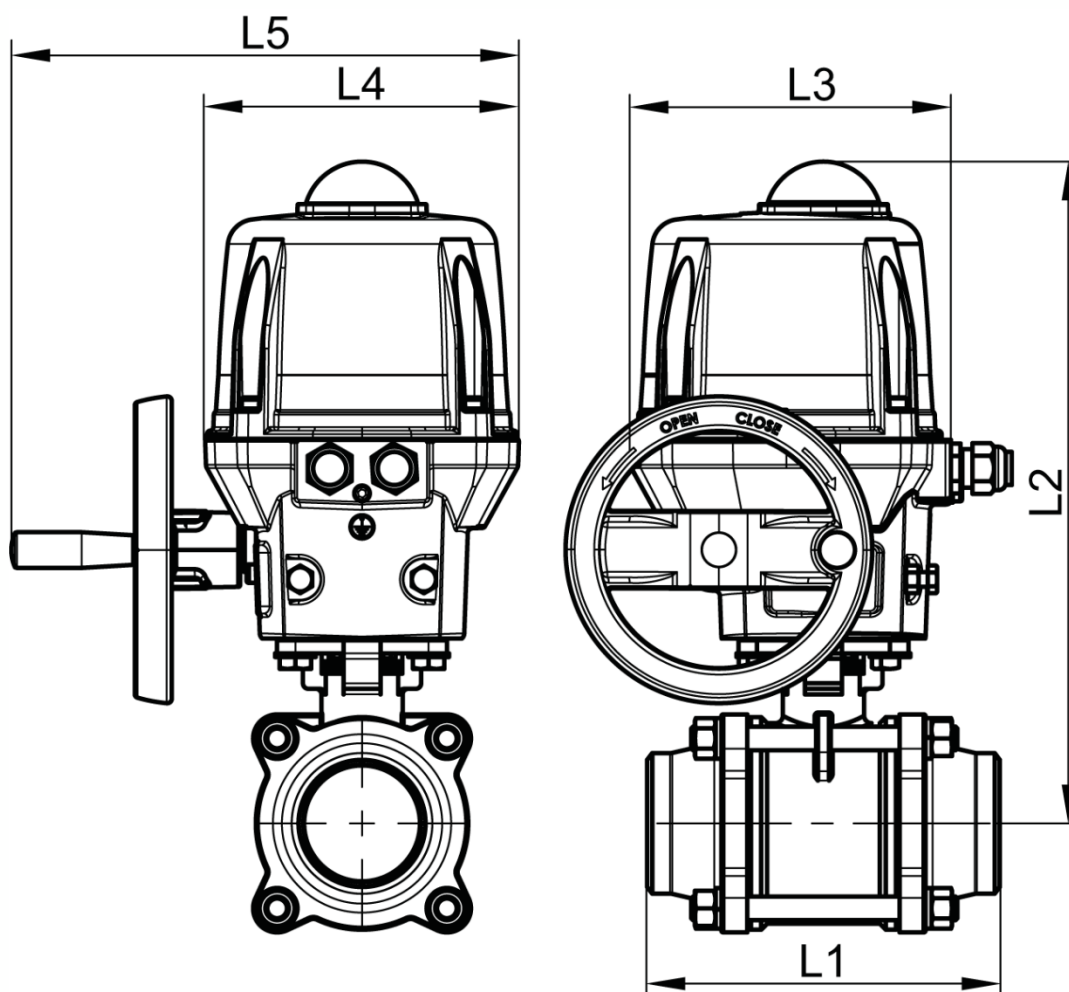
Aluminium housing and plastic cap IP68

Visual position indicator

Anti-condensation heater



DN20 to DN50



DN65 to DN100

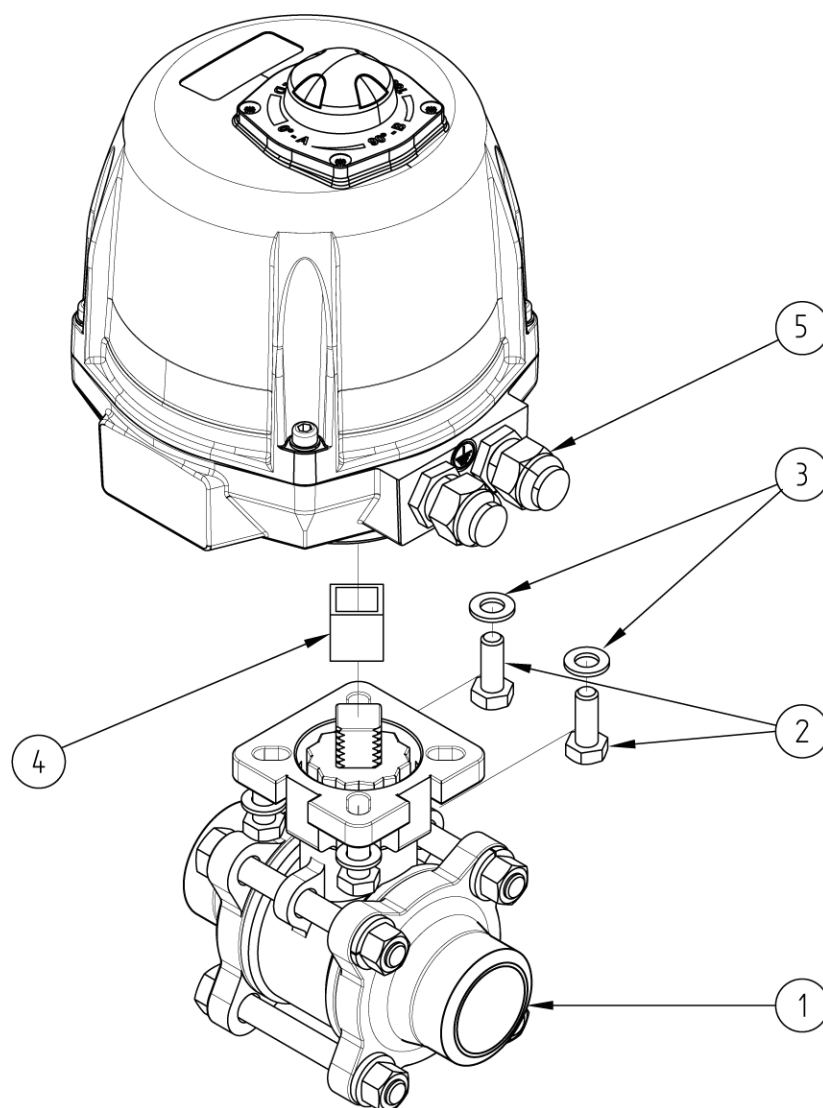
Béné Inox – 11 chemin de la Pierre Blanche – 69800 SAINT-PRIEST – S.A.S with 240 000 € share capital – SIREN N° 311 810 287
Tel. N°: +33 (0)4 78 90 48 22 – Fax N°: +33 (0)4 78 90 69 59 – www.bene-inox.com – bene@bene-inox.com

Technical information, illustrations and photographs are provided for information only, they are not contractual. Some may vary according to the tolerances accepted in the profession and the applicable standards. All instructions for use, disassembly and maintenance are recommendations only. These could also vary depending on product usage conditions, its installation environment and purchaser requirements – of which the purchaser alone is responsible for their definition.

DN (mm)	NB (inches)	L1 (mm)	L2 (mm)	L3 (mm)	L4 (mm)	L5 (mm)	Opening/ closing time (90°) (s)	Weight (kg)	Part No. 100-230V AC and 100-350V DC
20	3/4"	90	250	192	170	x	7	4.12	450099-20A
25	1"	100	260	192	170	x	7	4.57	450099-25A
32	1"1/4	110	264	192	170	x	7	5.20	450099-32A
40	1"1/2	125	273	192	170	x	15	6.05	450099-40A
50	2"	150	279	192	170	x	15	7.70	450099-50A
65	2"1/2	190	358	209	170	275	15	13.80	450099-65A
80	3"	220	367	209	170	275	15	17.10	450099-80A
100	4"	270	398	209	170	275	30	28.90	450099-100A

DN (mm)	NB (inches)	Opening/ closing time (90°) (s)	Part No. 15-30V AC and 12-48V DC	Opening/ closing time (90°) (s)	Part No. 400V TRI 50/60 Hz
20	3/4"	7	450099-20B	10	450099-20C
25	1"	7	450099-25B	10	450099-25C
32	1"1/4	7	450099-32B	10	450099-32C
40	1"1/2	15	450099-40B	10	450099-40C
50	2"	15	450099-50B	10	450099-50C
65	2"1/2	15	450099-65B	10	450099-65C
80	3"	15	450099-80B	10	450099-80C
100	4"	30	450099-100B	20	450099-100C

Electric actuator with aluminium housing and plastic cap with IP68 protection rating.
 Visual position indicator. Manual override control with safe clutch disengagement.
 Configurable limit switches. Torque limiting device. Anti-condensation heater.
 Actuator operating temperature: -20°C to +70°C.
 Duty cycle: 50%. Number of starts per hour: 150.
 Actuator sized for a valve $\Delta P = \max$. 16 bar. For $\Delta P > 16$ bar, please contact us.
 Standard operation: Opening/closing at 0/90°.



N°	Part Name	Material	Quantity
1	3-PART VALVE (58192)	CF8M	1
2	FIXING BOLT	STAINLESS STEEL	4
3	WASHER	STAINLESS STEEL	4
4	COUPLING	STAINLESS STEEL	0 or 1
5	ELECTRIC ACTUATOR (50844)	ALUMINIUM/PLASTIC	1

You can refer to the following product data sheets for more technical information:

- **58192** : 3-part valve to be welded (butt welding)
- **50844** : ¼ turn (90°) electric actuator - IP68

Béné Inox – 11 chemin de la Pierre Blanche – 69800 SAINT-PRIEST – S.A.S with 240 000 € share capital – SIREN N° 311 810 287
Tel. N°: +33 (0)4 78 90 48 22 – Fax N°: +33 (0)4 78 90 69 59 – www.bene-inox.com – bene@bene-inox.com

Technical information, illustrations and photographs are provided for information only, they are not contractual. Some may vary according to the tolerances accepted in the profession and the applicable standards. All instructions for use, disassembly and maintenance are recommendations only. These could also vary depending on product usage conditions, its installation environment and purchaser requirements – of which the purchaser alone is responsible for their definition.