

# Ball valves

**Model 50093**

**3-part ball valve for butt welding (BW)  
(58192)**

**and electric actuator IP66 with positioning  
unit (50842)**



## Specifications

### ⇒ Valve

**Dimensions:** DN8 to DN80 (1/4" to 3")

**Connection:** to be welded (butt welding)

**Pressure:** PN63 (1000 lbs)

**Operating temperature:** -29°C to +175°C

**Material:** 316 or CF8M stainless steel  
(for the stainless steel parts that can come into  
contact with the transported fluid)

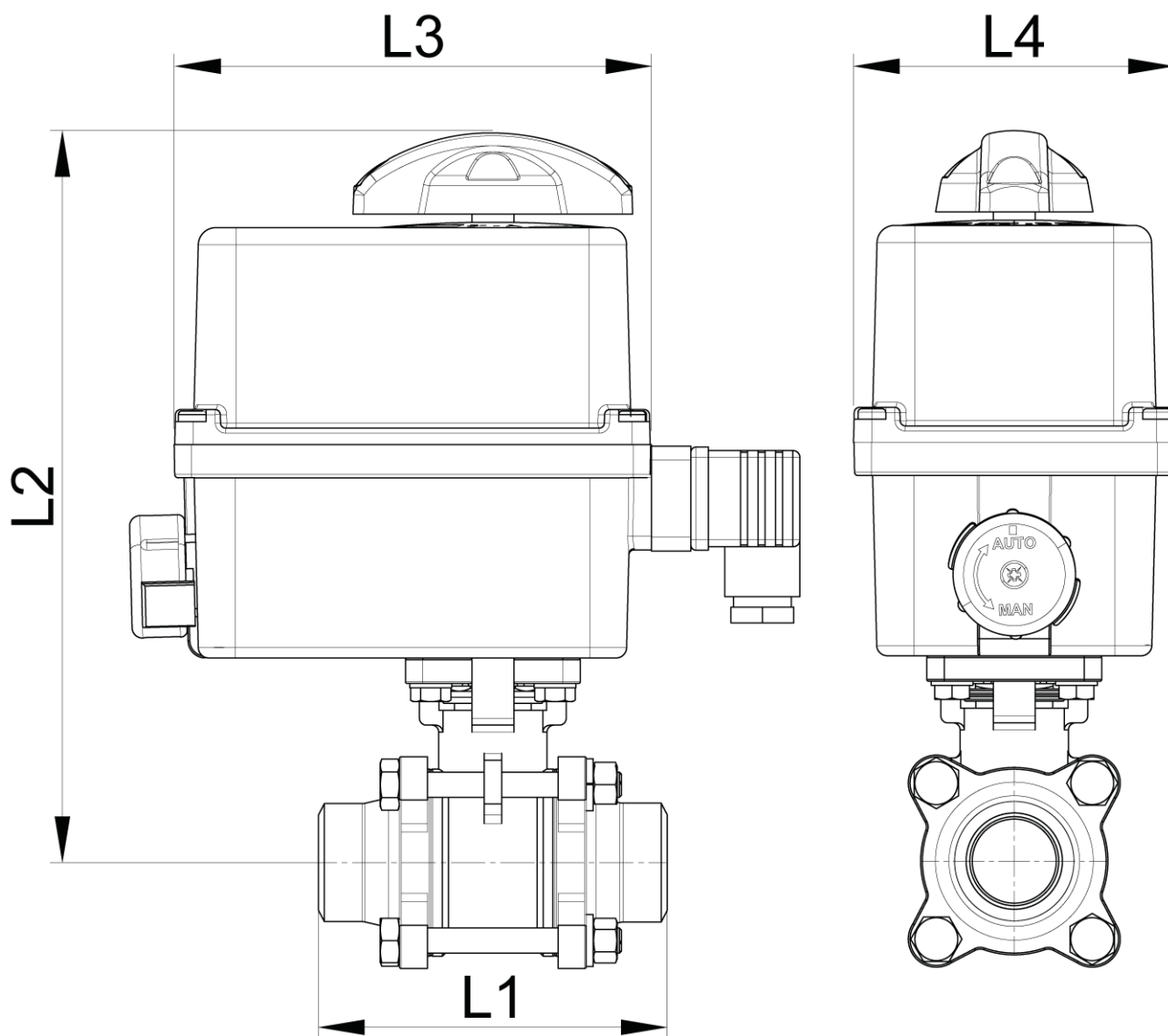
### ⇒ Electric actuator

**Operating temperature:** -10°C to +55°C

Plastic housing IP66

Visual position indicator

Anti-condensation heater



DN (mm)	NB (inches)	L1 (mm)	L2 (mm)	L3 (mm)	L4 (mm)	Opening/ closing time (90°) (s)	Weight (kg)	Part No. 100-230V AC and 100-350V DC	Opening/ closing time (90°) (s)	Part No. 15-30V AC and 12-48V DC
8	1/4"	70	194	136	92	25	1.72	450093-8A	25	450093-8B
10	3/8"	70	194	136	92	25	1.72	450093-10A	25	450093-10B
15	1/2"	75	194	136	92	25	1.78	450093-15A	25	450093-15B
20	3/4"	90	201	136	92	25	2.02	450093-20A	25	450093-20B
25	1"	100	235	151	128	40	3.57	450093-25A	40	450093-25B
32	1"1/4	110	239	151	128	40	4.20	450093-32A	40	450093-32B
40	1"1/2	125	248	151	128	79	5.05	450093-40A	79	450093-40B
50	2"	150	254	151	128	119	6.70	450093-50A	119	450093-50B
65	2"1/2	190	276	151	128	119	10.80	450093-65A	119	450093-65B

Electric actuator with plastic housing with IP66 protection rating.

Visual position indicator. Manual override control with safe clutch disengagement.

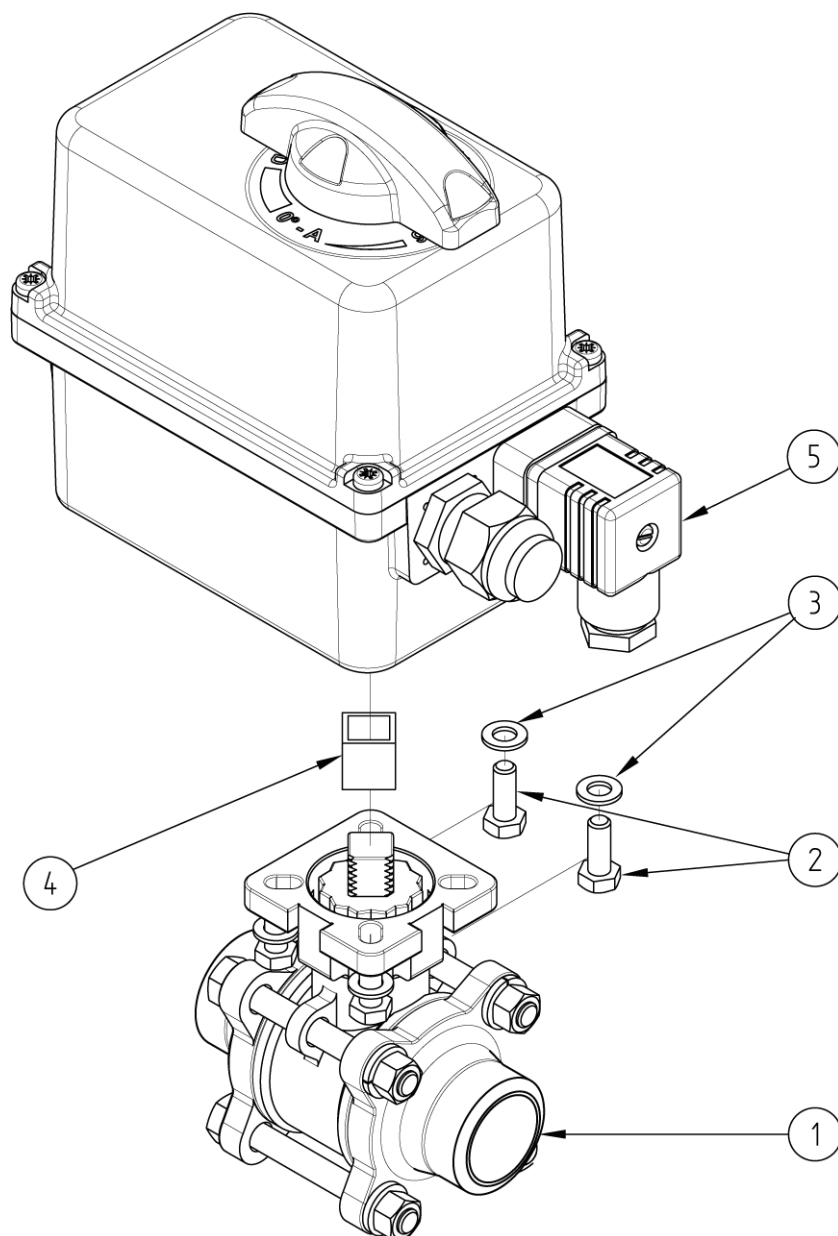
Configurable limit switches. Torque limiting device. Anti-condensation heater.

Actuator operating temperature: -10°C to +55°C.

Duty cycle: 50%. Number of starts per hour: 150.

Actuator sized for a valve  $\Delta P = \max. 16 \text{ bar}$ . For  $\Delta P > 16 \text{ bar}$ , please contact us.

Positioner version: The integrated positioning unit makes it possible to control the valve (opening/closing regulation) with a 4-20mA (or 0/10V) signal.



N°	Part Name	Material	Quantity
1	3-PART VALVE (58192)	CF8M	1
2	FIXING BOLT	STAINLESS STEEL	4
3	WASHER	STAINLESS STEEL	4
4	COUPLING	STAINLESS STEEL	0 or 1
5	ELECTRIC ACTUATOR (50842)	PLASTIC	1

You can refer to the following product data sheets for more technical information:

- **58192** : 3-part valve to be welded (butt welding)
- **50842** : 1/4 turn (90°) electric actuator with 4/20mA positioning unit - IP66