

# Ball valves

## Model 50089 3-part ball valve for socket welding (SW) (58191) with fail-safe electric actuator IP66 (50841)



### Specifications

#### ⇒ Valve

**Dimensions:** DN8 to DN80 (1/4" to 3")

**Connection:** to be welded (socket welding)

**Pressure:** PN63 (1000 lbs)

**Operating temperature:** -29°C to +175°C

**Material:** 316 or CF8M stainless steel  
(for the stainless steel parts that can come into contact with the transported fluid)

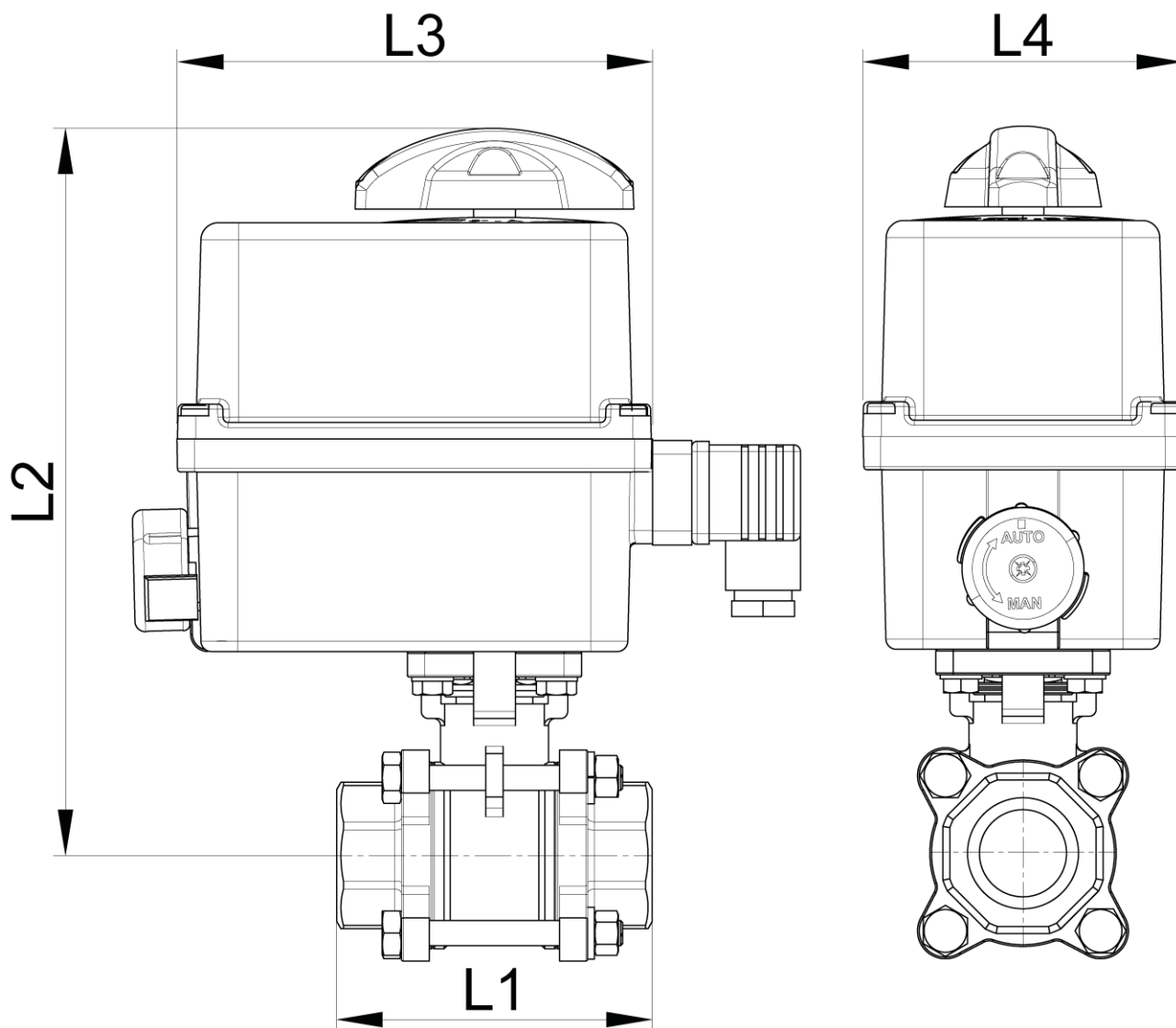
#### ⇒ Electric actuator

**Operating temperature:** -10°C to +40°C

Plastic housing IP66

Visual position indicator

Anti-condensation heater



DN (mm)	NB (inches)	L1 (mm)	L2 (mm)	L3 (mm)	L4 (mm)	Opening/ closing time (90°) (s)	Weight (kg)	Part No. 100-230V AC and 100-350V DC	Opening/ closing time (90°) (s)	Part No. 15-30V AC and 12-48V DC
8	1/4"	75	194	136	92	11	1.72	450089-8A	11	450089-8B
10	3/8"	75	194	136	92	11	1.72	450089-10A	11	450089-10B
15	1/2"	75	194	136	92	11	1.78	450089-15A	11	450089-15B
20	3/4"	80	201	136	92	12	2.02	450089-20A	12	450089-20B
25	1"	90	211	136	92	12	2.47	450089-25A	12	450089-25B
32	1"1/4	110	239	151	128	7	4.20	450089-32A	7	450089-32B
40	1"1/2	120	248	151	128	7	5.05	450089-40A	7	450089-40B
50	2"	140	254	151	128	12	6.70	450089-50A	12	450089-50B
65	2"1/2	185	276	151	128	12	10.80	450089-65A	12	450089-65B
80	3"	205	285	151	128	23	14.10	450089-80A	22	450089-80B

Electric actuator with plastic housing with IP66 protection rating.

Visual position indicator. Manual override control with safe clutch disengagement.

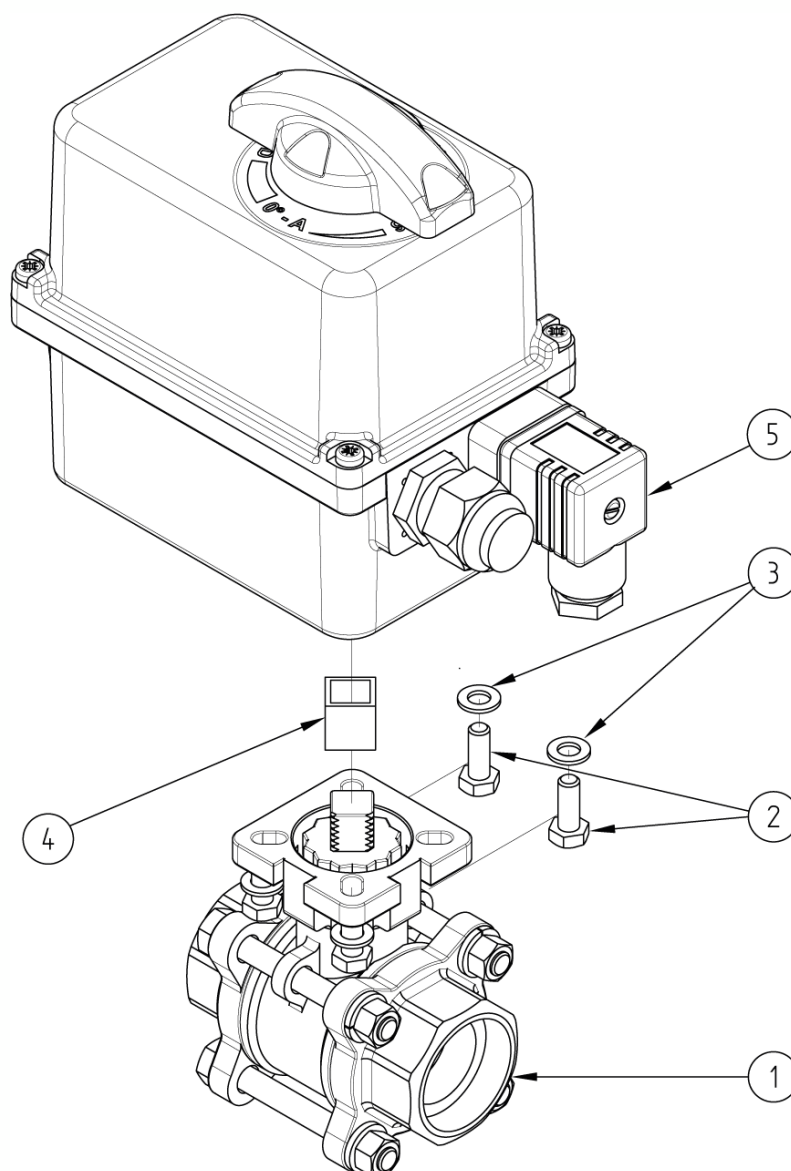
Configurable limit switches. Torque limiting device. Anti-condensation heater.

Actuator operating temperature: -10°C to +40°C.

Duty cycle: 50%. Number of starts per hour: 150.

Actuator sized for a valve  $\Delta P = \max. 16 \text{ bar}$ . For  $\Delta P > 16 \text{ bar}$ , please contact us.

Fail-safe version: The internal fail-safe backup unit (circuit board + battery) makes sure that the valve returns to the closed position if there is a power cut.



N°	Part Name	Material	Quantity
1	3-PART VALVE (58191)	CF8M	1
2	FIXING BOLT	STAINLESS STEEL	4
3	WASHER	STAINLESS STEEL	4
4	COUPLING	STAINLESS STEEL	0 or 1
5	ELECTRIC ACTUATOR (50841)	PLASTIC	1

You can refer to the following product data sheets for more technical information:

- **58191** : 3-part valve to be welded (socket welding)
- **50841** : Fail-safe ¼ turn (90°) electric actuator - IP66

**Béné Inox** – 11 chemin de la Pierre Blanche – 69800 SAINT-PRIEST – S.A.S with 240 000 € share capital – SIREN N° 311 810 287  
Tel. N°: +33 (0)4 78 90 48 22 – Fax N°: +33 (0)4 78 90 69 59 – [www.bene-inox.com](http://www.bene-inox.com) – [bene@bene-inox.com](mailto:bene@bene-inox.com)

Technical information, illustrations and photographs are provided for information only, they are not contractual. Some may vary according to the tolerances accepted in the profession and the applicable standards. All instructions for use, disassembly and maintenance are recommendations only. These could also vary depending on product usage conditions, its installation environment and purchaser requirements – of which the purchaser alone is responsible for their definition.