

Ball valves

Model 50086

**3-part ball valve for socket welding (SW)
(58191) with electric actuator IP66 (50840)**



Specifications

⇒ Valve

Dimensions: DN8 to DN80 (1/4" to 3")

Connection: to be welded (socket welding)

Pressure: PN63 (1000 lbs)

Operating temperature: -29°C to +175°C

Material: 316 or CF8M stainless steel

(for the stainless steel parts that can come into contact with the transported fluid)

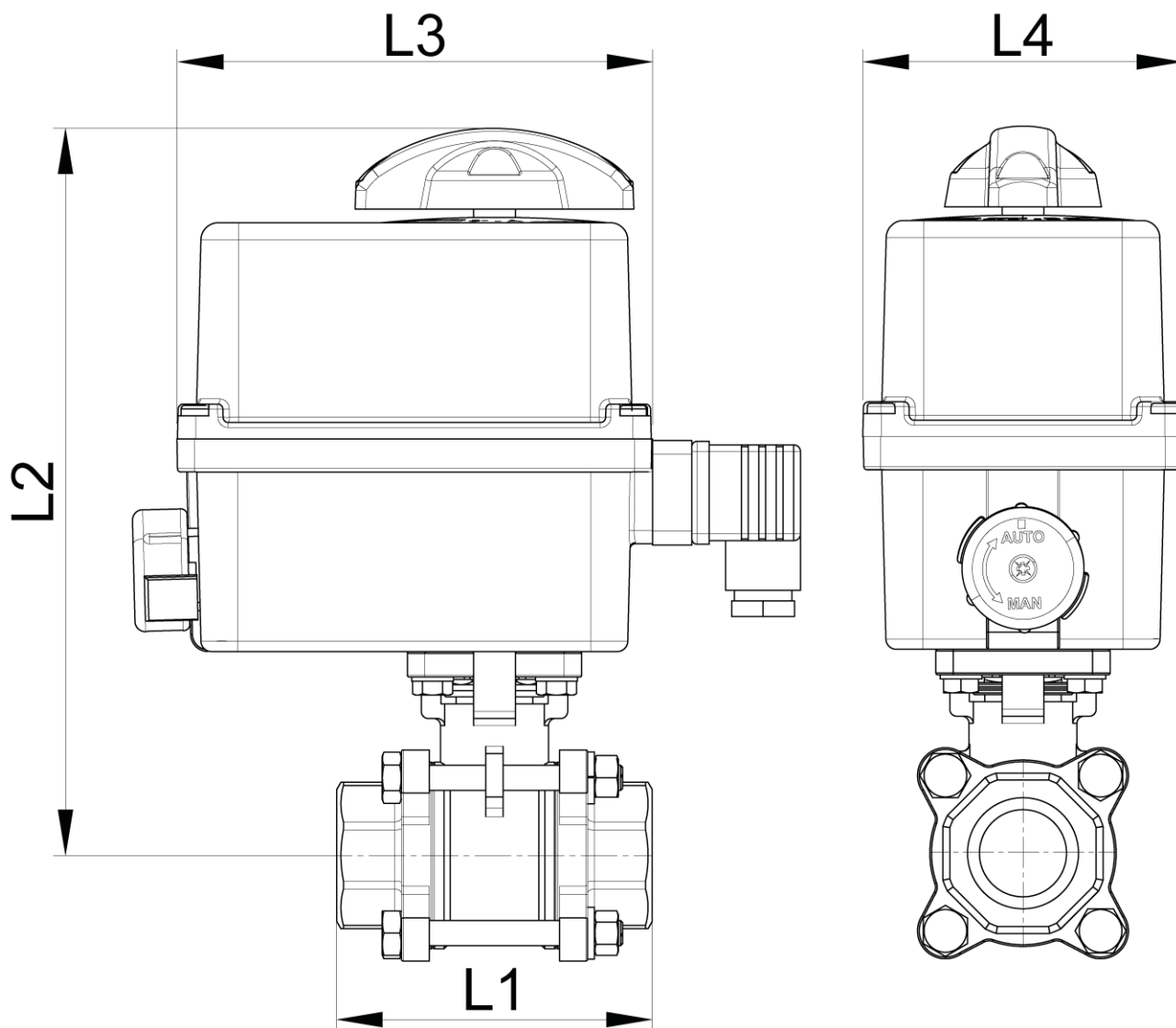
⇒ Electric actuator

Operating temperature: -10°C to +55°C

Plastic housing IP66

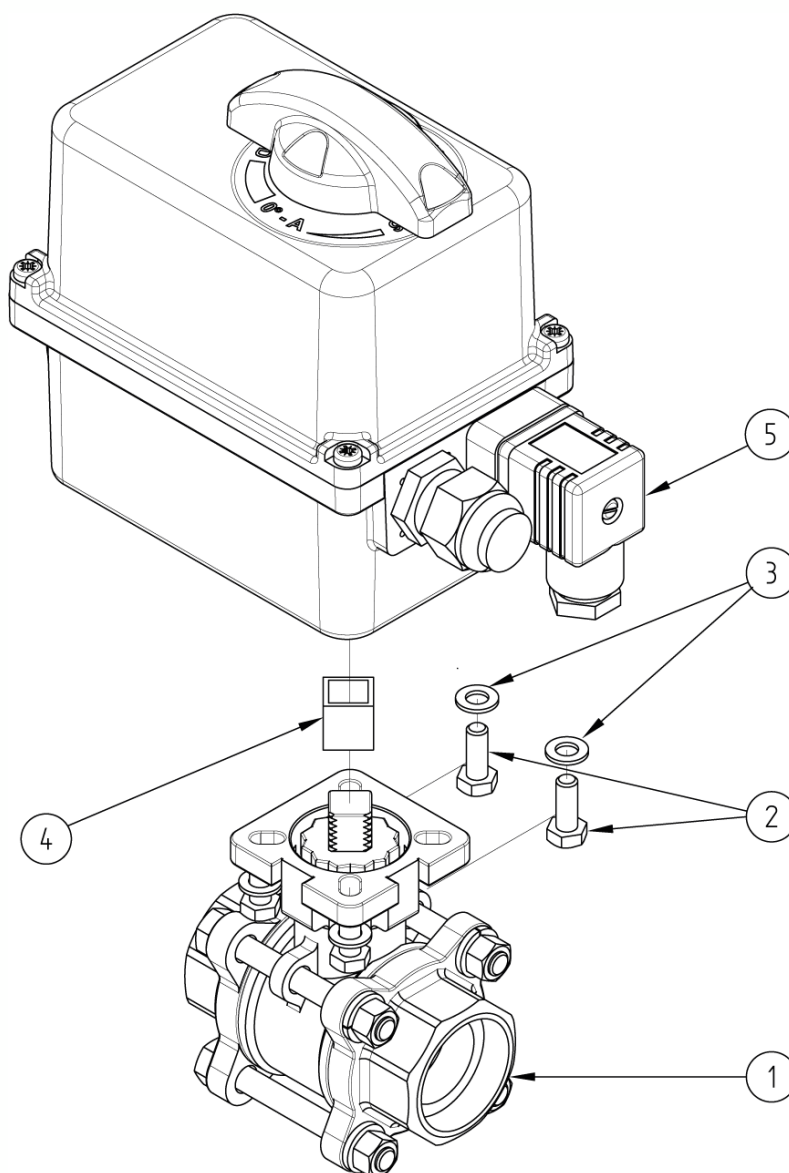
Visual position indicator

Anti-condensation heater



DN (mm)	NB (inches)	L1 (mm)	L2 (mm)	L3 (mm)	L4 (mm)	Opening/ closing time (90°) (s)	Weight (kg)	Part No. 100-230V AC and 100-350V DC	Opening/ closing time (90°) (s)	Part No. 15-30V AC and 12-48V DC
8	1/4"	75	194	136	92	11	1.52	450086-8A	11	450086-8B
10	3/8"	75	194	136	92	11	1.52	450086-10A	11	450086-10B
15	1/2"	75	194	136	92	11	1.58	450086-15A	11	450086-15B
20	3/4"	80	201	136	92	12	1.82	450086-20A	12	450086-20B
25	1"	90	211	136	92	12	2.27	450086-25A	12	450086-25B
32	1"1/4	110	215	136	92	26	2.90	450086-32A1	24	450086-32B1
32	1"1/4	110	239	151	128	7	4.00	450086-32A2	7	450086-32B2
40	1"1/2	120	224	136	92	26	3.75	450086-40A1	24	450086-40B1
40	1"1/2	120	248	151	128	7	4.85	450086-40A2	7	450086-40B2
50	2"	140	254	151	128	12	6.50	450086-50A	12	450086-50B
65	2"1/2	185	276	151	128	12	10.60	450086-65A	12	450086-65B
80	3"	205	285	151	128	23	13.90	450086-80A	22	450086-80B

Electric actuator with plastic housing with IP66 protection rating.
 Visual position indicator. Manual override control with safe clutch disengagement.
 Configurable limit switches. Torque limiting device. Anti-condensation heater.
 Actuator operating temperature: -10°C to +55°C.
 Duty cycle: 50%. Number of starts per hour: 150.
 Actuator sized for a valve $\Delta P = \max. 16 \text{ bar}$. For $\Delta P > 16 \text{ bar}$, please contact us.
 Standard operation: Opening/closing at 0/90°.



N°	Part Name	Material	Quantity
1	3-PART VALVE (58191)	CF8M	1
2	FIXING BOLT	STAINLESS STEEL	4
3	WASHER	STAINLESS STEEL	4
4	COUPLING	STAINLESS STEEL	0 or 1
5	ELECTRIC ACTUATOR (50840)	PLASTIC	1

You can refer to the following product data sheets for more technical information:

- **58191** : 3-part valve to be welded (socket welding)
- **50840** : ¼ turn (90°) electric actuator - IP66

Béné Inox – 11 chemin de la Pierre Blanche – 69800 SAINT-PRIEST – S.A.S with 240 000 € share capital – SIREN N° 311 810 287
Tel. N°: +33 (0)4 78 90 48 22 – Fax N°: +33 (0)4 78 90 69 59 – www.bene-inox.com – bene@bene-inox.com

Technical information, illustrations and photographs are provided for information only, they are not contractual. Some may vary according to the tolerances accepted in the profession and the applicable standards. All instructions for use, disassembly and maintenance are recommendations only. These could also vary depending on product usage conditions, its installation environment and purchaser requirements – of which the purchaser alone is responsible for their definition.