

# Ball valves

## Model 50074 3-part ball valve for socket welding (SW) (58191) with stainless steel pneumatic actuator (50802)



### Specifications

#### ⇒ Valve

**Dimensions:** DN8 to DN80 (1/4" to 3")

**Connection:** to be welded (socket welding)

**Pressure:** PN63 (1000 lbs)

**Operating temperature:** -29°C to +175°C

**Material:** 316 or CF8M stainless steel  
(for the stainless steel parts that can come into contact with the transported fluid)

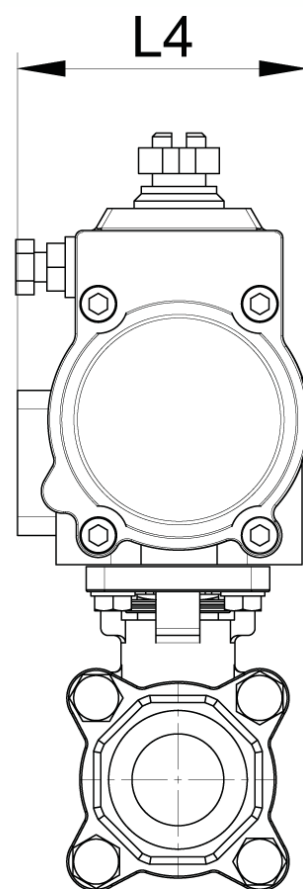
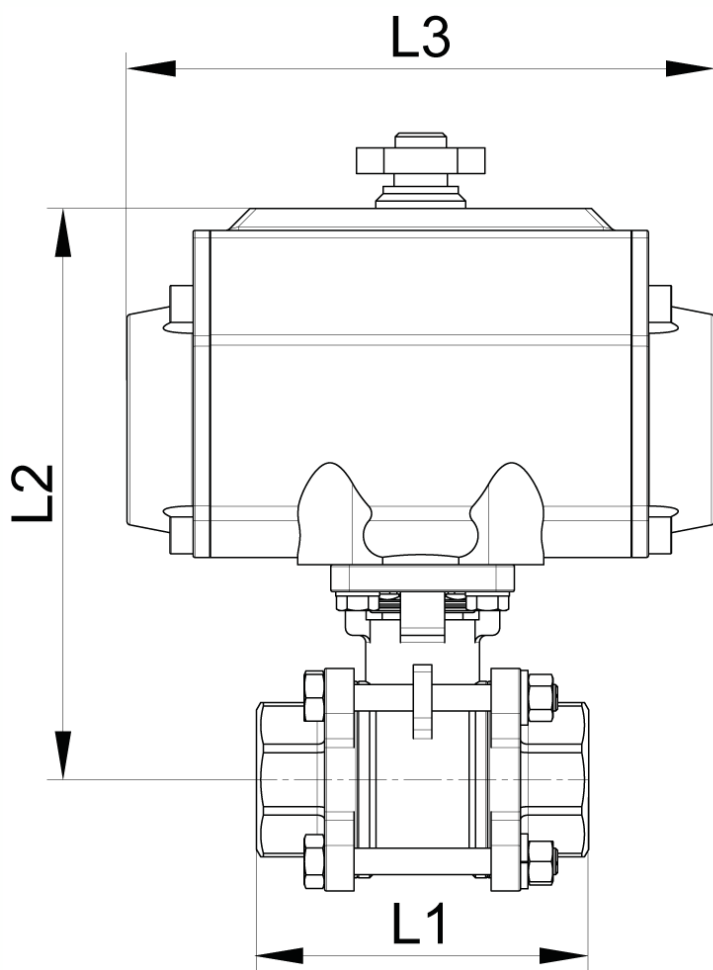
#### ⇒ Pneumatic actuator

**Air connection:** 1/8" (VP50 to VP88) or 1/4" (VP100 to VP200)

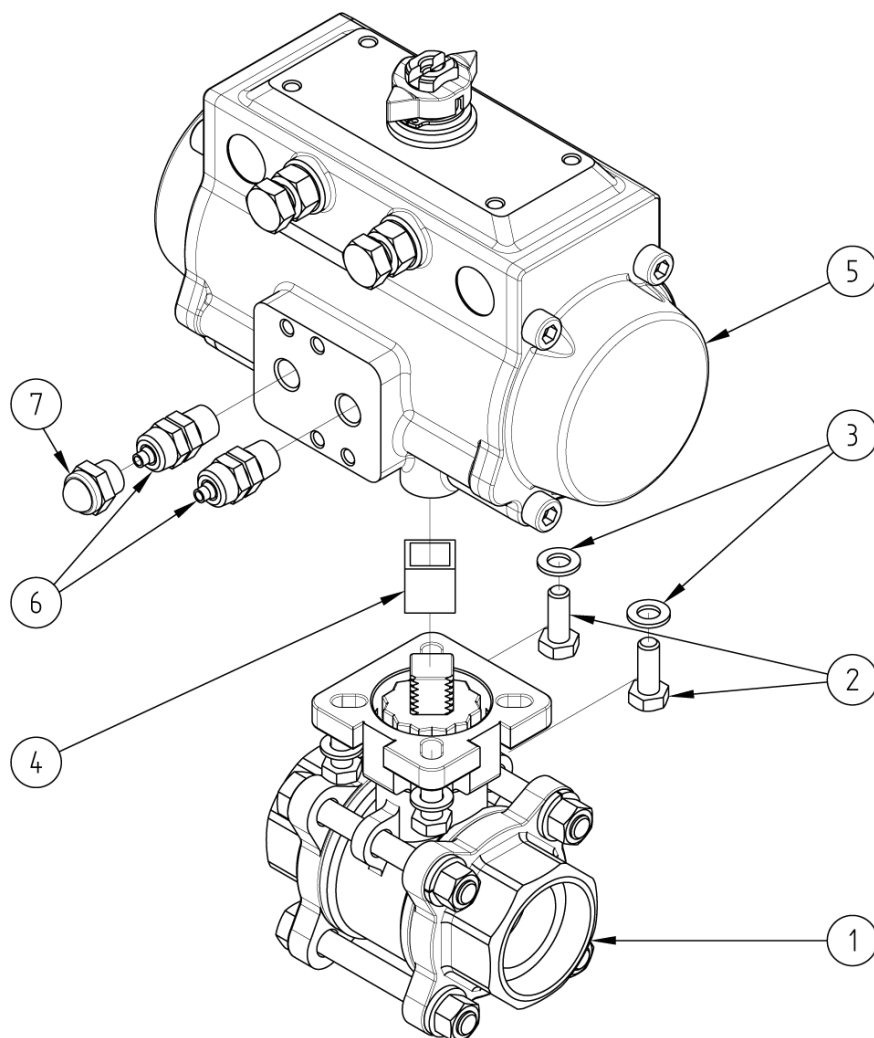
**Operating pressure:** 6 to 8 bar

**Operating temperature:** -20°C to +85°C

**Material:** Stainless steel



DN (mm)	NB (inches)	L1 (mm)	L2 (mm)	L3 (mm)	L4 (mm)	Weight (kg)	Spring return Part No.	Double-acting type Part No.
8	1/4"	75	128	141	71	2.92	450074-8SE	450074-8DE
10	3/8"	75	128	141	71	2.92	450074-10SE	450074-10DE
15	1/2"	75	128	141	71	2.98	450074-15SE	450074-15DE
20	3/4"	80	146	164	81	4.22	450074-20SE	-
20	3/4"	80	135	141	71	3.22	-	450074-20DE
25	1"	90	156	164	81	4.67	450074-25SE	450074-25DE
32	1 1/4"	110	160	164	81	5.30	450074-32SE	450074-32DE
40	1 1/2"	120	188	210	95	8.25	450074-40SE	450074-40DE
50	2"	140	194	210	95	9.90	450074-50SE	450074-50DE
65	2 1/2"	185	244	275	123	20.20	450074-65SE	-
65	2 1/2"	185	229	241	106	16.80	-	450074-65DE
80	3"	205	253	275	123	23.50	450074-80SE	450074-80DE



N°	Part Name	Material	Quantity
1	3-PART VALVE (58191)	CF8M	1
2	FIXING BOLT	STAINLESS STEEL	4
3	WASHER	STAINLESS STEEL	4
4	COUPLING	STAINLESS STEEL	0 or 1
5	PNEUMATIC ACTUATOR (50802)	STAINLESS STEEL	1
6	CAPPED PNEUMATIC CONNECTOR	NICKEL-PLATED BRASS	1 (SE*) or 2 (DE**)
7	EXHAUST SILENCER	NICKEL-PLATED BRASS	1 (SE*)

\*Spring return pneumatic actuator \*\*Double-acting type pneumatic actuator

You can refer to the following product data sheets for more technical information:

- **58191** : 3-part valve to be welded (socket welding)
- **50802SE** : Spring return pneumatic actuator
- **50802DE** : Double-acting type pneumatic actuator

**Béné Inox** – 11 chemin de la Pierre Blanche – 69800 SAINT-PRIEST – S.A.S with 240 000 € share capital – SIREN N° 311 810 287  
Tel. N°: +33 (0)4 78 90 48 22 – Fax N°: +33 (0)4 78 90 69 59 – [www.bene-inox.com](http://www.bene-inox.com) – [bene@bene-inox.com](mailto:bene@bene-inox.com)

Technical information, illustrations and photographs are provided for information only, they are not contractual. Some may vary according to the tolerances accepted in the profession and the applicable standards. All instructions for use, disassembly and maintenance are recommendations only. These could also vary depending on product usage conditions, its installation environment and purchaser requirements – of which the purchaser alone is responsible for their definition.