

Ball valves

Model 50072 3-part ball valve for butt welding (BW) (58192) with aluminium pneumatic actuator (50800)



Specifications

⇒ Valve

Dimensions: DN8 to DN100 (1/4" to 4")

Connection: to be welded (butt welding)

Pressure: PN63 (1000 lbs)

Operating temperature: -29°C to +175°C

Material: 316 or CF8M stainless steel
(for the stainless steel parts that can come into contact with the transported fluid)

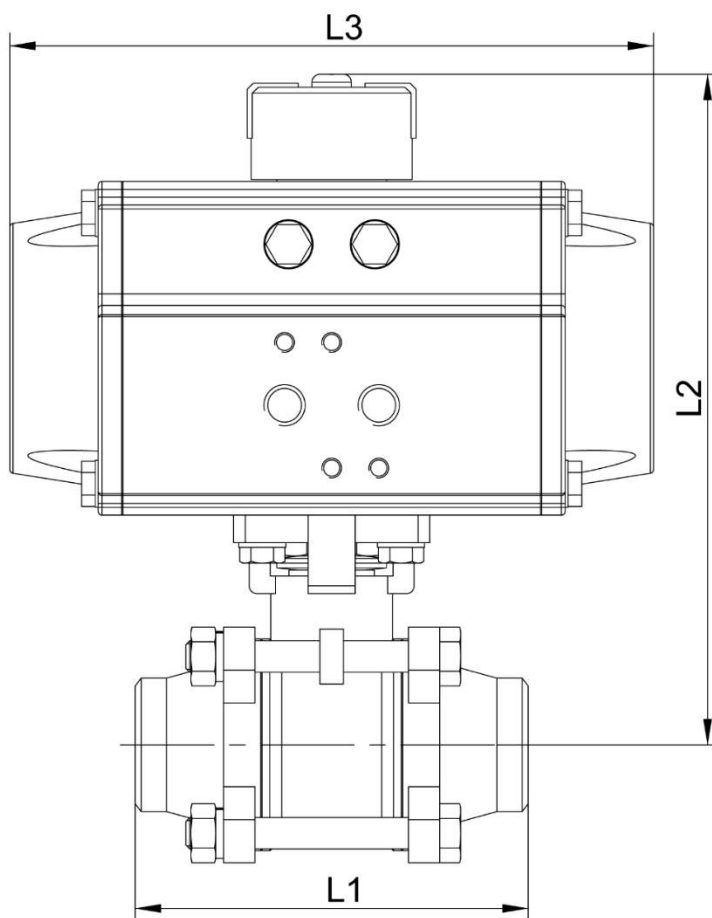
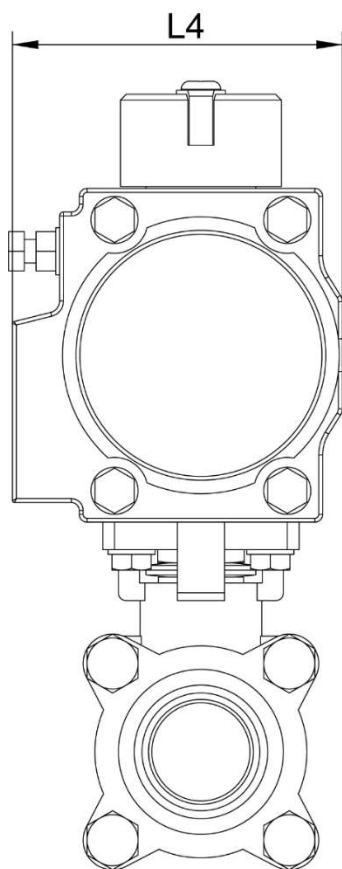
⇒ Pneumatic actuator

Air connection: 1/8" (VP50 to VP88) or
1/4" (VP100 to VP200)

Operating pressure: 6 to 8 bar

Operating temperature: -20°C to +80°C

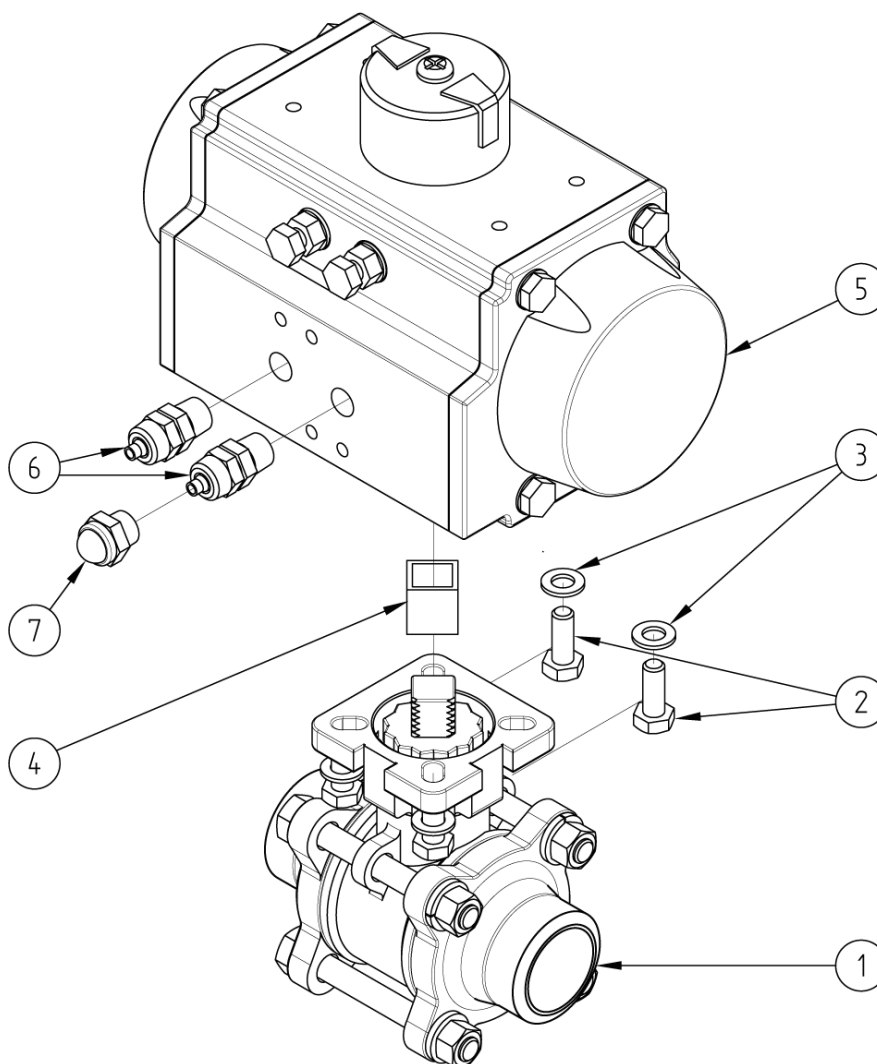
Material: Aluminium



DN (mm)	NB (inches)	L1 (mm)	L2 (mm)	L3 (mm)	L4 (mm)	Weight (kg)	Spring return Part No.	Double- acting type Part No.
8	1/4"	70	114	148	72	1.72	450072-8SE	450072-8DE
10	3/8"	70	114	148	72	1.72	450072-10SE	450072-10DE
15	1/2"	75	114	148	72	1.78	450072-15SE	450072-15DE
20	3/4"	90	134	164	84	2.52	450072-20SE	-
20	3/4"	90	121	148	72	2.02	-	4500712-20DE
25	1"	110	148	164	84	3.60	450072-25SE	450072-25DE
32	1 1/4"	125	175	208	96	6.00	450072-32SE	450072-32DE
40	1 1/2"	150	181	208	96	7.65	450072-40SE	450072-40DE
50	2"	190	228	268	123	14.50	450072-50SE	450072-50DE
65	2 1/2"	185	228	268	123	14.50	450072-65SE	-
65	2 1/2"	190	216	248	108	12.90	-	450072-65DE
80	3"	220	237	268	123	17.80	450072-80SE	450072-80DE
100	4"	270	299	347	151	34.90	450072-100SE	450072-100DE

Béné Inox – 11 chemin de la Pierre Blanche – 69800 SAINT-PRIEST – S.A.S with 240 000 € share capital – SIREN N° 311 810 287
Tel. N°: +33 (0)4 78 90 48 22 – Fax N°: +33 (0)4 78 90 69 59 – www.bene-inox.com – bene@bene-inox.com

Technical information, illustrations and photographs are provided for information only, they are not contractual. Some may vary according to the tolerances accepted in the profession and the applicable standards. All instructions for use, disassembly and maintenance are recommendations only. These could also vary depending on product usage conditions, its installation environment and purchaser requirements – of which the purchaser alone is responsible for their definition.



N°	Part Name	Material	Quantity
1	3-PART VALVE (58192)	CF8M	1
2	FIXING BOLT	STAINLESS STEEL	4
3	WASHER	STAINLESS STEEL	4
4	COUPLING	STAINLESS STEEL	0 or 1
5	PNEUMATIC ACTUATOR (50800)	ALUMINIUM	1
6	CAPPED PNEUMATIC CONNECTOR	NICKEL-PLATED BRASS	1 (SE*) or 2 (DE**)
7	EXHAUST SILENCER	NICKEL-PLATED BRASS	1 (SE*)

*Spring return pneumatic actuator **Double-acting type pneumatic actuator

You can refer to the following product data sheets for more technical information:

- **58192** : 3-part valve to be welded (butt welding)
- **50800SE** : Spring return pneumatic actuator
- **50800DE** : Double-acting type pneumatic actuator

Béné Inox – 11 chemin de la Pierre Blanche – 69800 SAINT-PRIEST – S.A.S with 240 000 € share capital – SIREN N° 311 810 287
Tel. N°: +33 (0)4 78 90 48 22 – Fax N°: +33 (0)4 78 90 69 59 – www.bene-inox.com – bene@bene-inox.com

Technical information, illustrations and photographs are provided for information only, they are not contractual. Some may vary according to the tolerances accepted in the profession and the applicable standards. All instructions for use, disassembly and maintenance are recommendations only. These could also vary depending on product usage conditions, its installation environment and purchaser requirements – of which the purchaser alone is responsible for their definition.