

Ball valves

Model 50063 2-part F/F ball valve (58308) and electric actuator IP68 with positioning unit (50846)



Specifications

⇒ Valve

Dimensions: DN20 to DN80 (3/4" to 3")

Connection: BSP female thread

Pressure: PN63 (1000 lbs)

Operating temperature: -29°C to +175°C

Material: 316 or CF8M stainless steel
(for the stainless steel parts that can come into contact with the transported fluid)

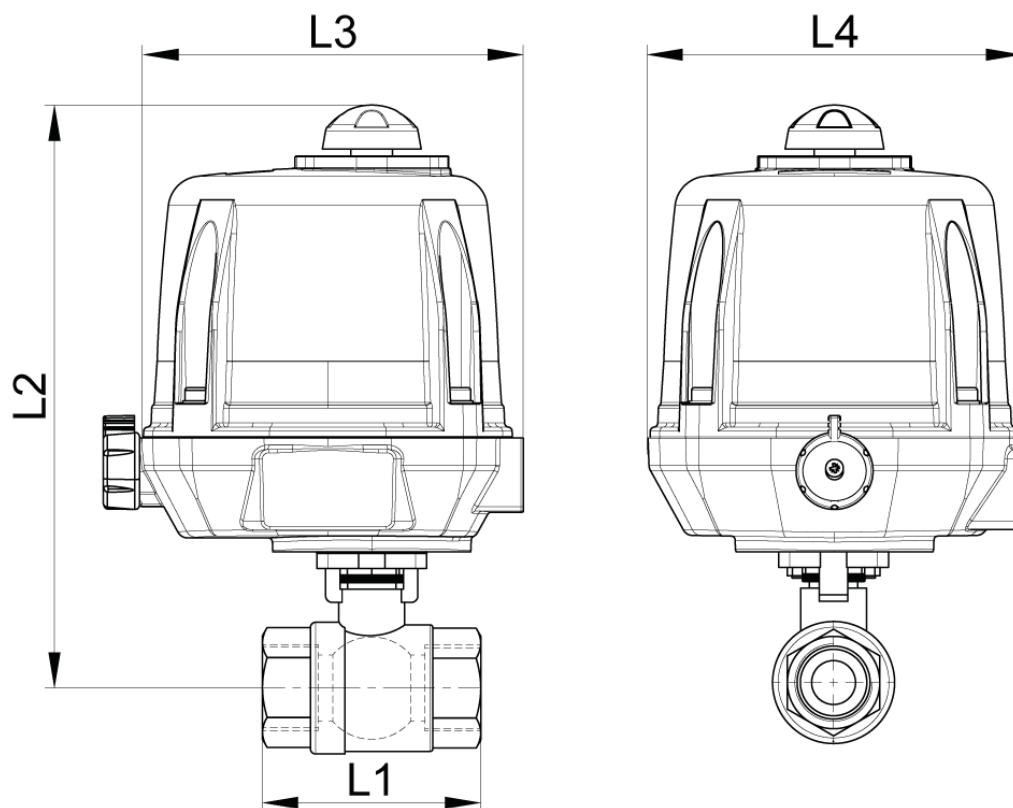
⇒ Electric actuator

Operating temperature: -20°C to +70°C

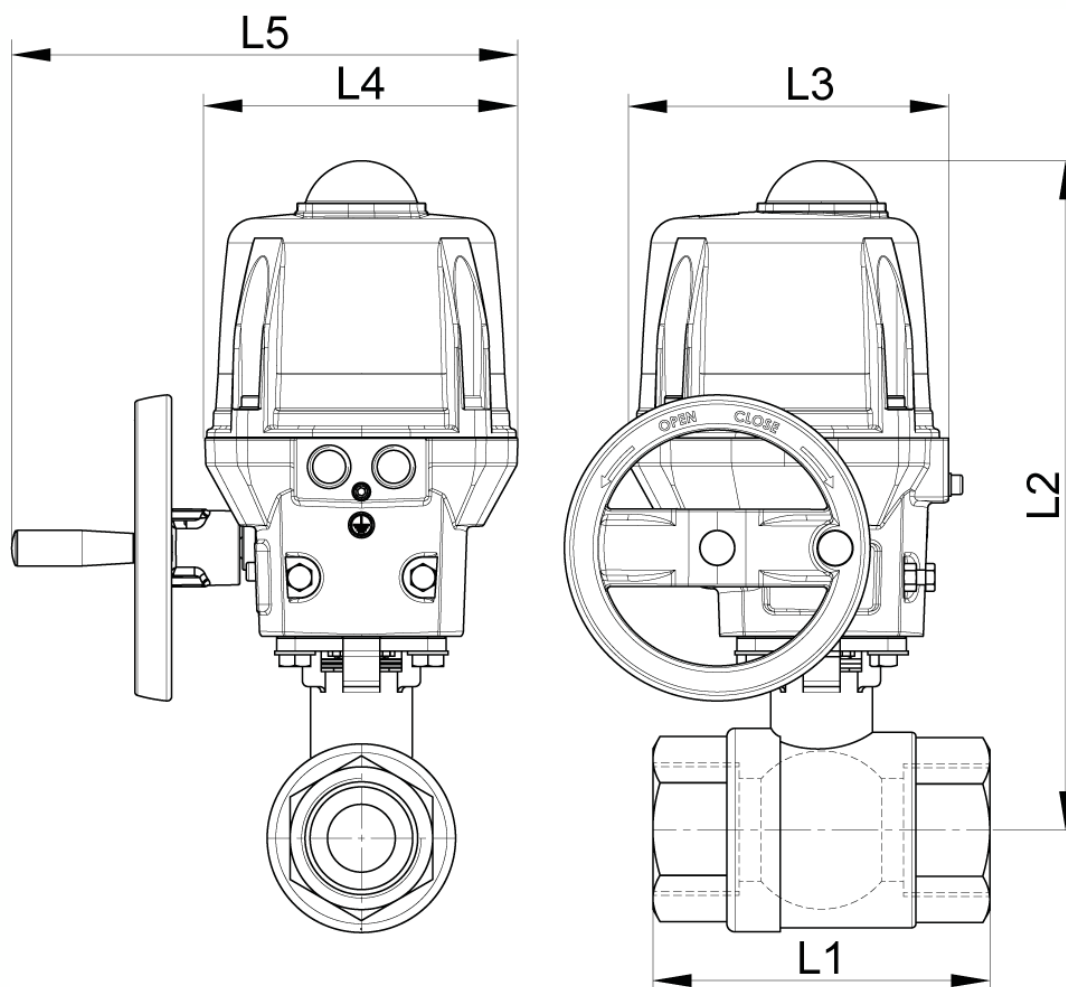
Aluminium housing and plastic cap IP68

Visual position indicator

Anti-condensation heater



DN20 to DN50



DN65 to DN80

Béné Inox – 11 chemin de la Pierre Blanche – 69800 SAINT-PRIEST – S.A.S with 240 000 € share capital – SIREN N° 311 810 287
Tel. N°: +33 (0)4 78 90 48 22 – Fax N°: +33 (0)4 78 90 69 59 – www.bene-inox.com – bene@bene-inox.com

Technical information, illustrations and photographs are provided for information only, they are not contractual. Some may vary according to the tolerances accepted in the profession and the applicable standards. All instructions for use, disassembly and maintenance are recommendations only. These could also vary depending on product usage conditions, its installation environment and purchaser requirements – of which the purchaser alone is responsible for their definition.

DN (mm)	NB (inches)	L1 (mm)	L2 (mm)	L3 (mm)	L4 (mm)	L5 (mm)	Opening/ closing time (90°) (s)	Weight (kg)	Part No. 100-230V AC and 100-350V DC	Part No. 15-30V AC and 12-48V DC
20	3/4"	70	250	192	170	x	15	3.71	450063-20A	450063-20B
25	1"	85	259	192	170	x	15	4.20	450063-25A	450063-25B
32	1"1/4	94	264	192	170	x	15	4.52	450063-32A	450063-32B
40	1"1/2	105	273	192	170	x	15	5.14	450063-40A	450063-40B
50	2"	125	280	192	170	x	20	6.37	450063-50A	450063-50B
65	2"1/2	155	358	209	170	275	15	11.10	450063-65A	450063-65B
80	3"	173	367	209	170	275	30	18.20	450063-80A	450063-80B

Electric actuator with aluminium housing and plastic cap with IP68 protection rating.

Visual position indicator. Manual override control with safe clutch disengagement.

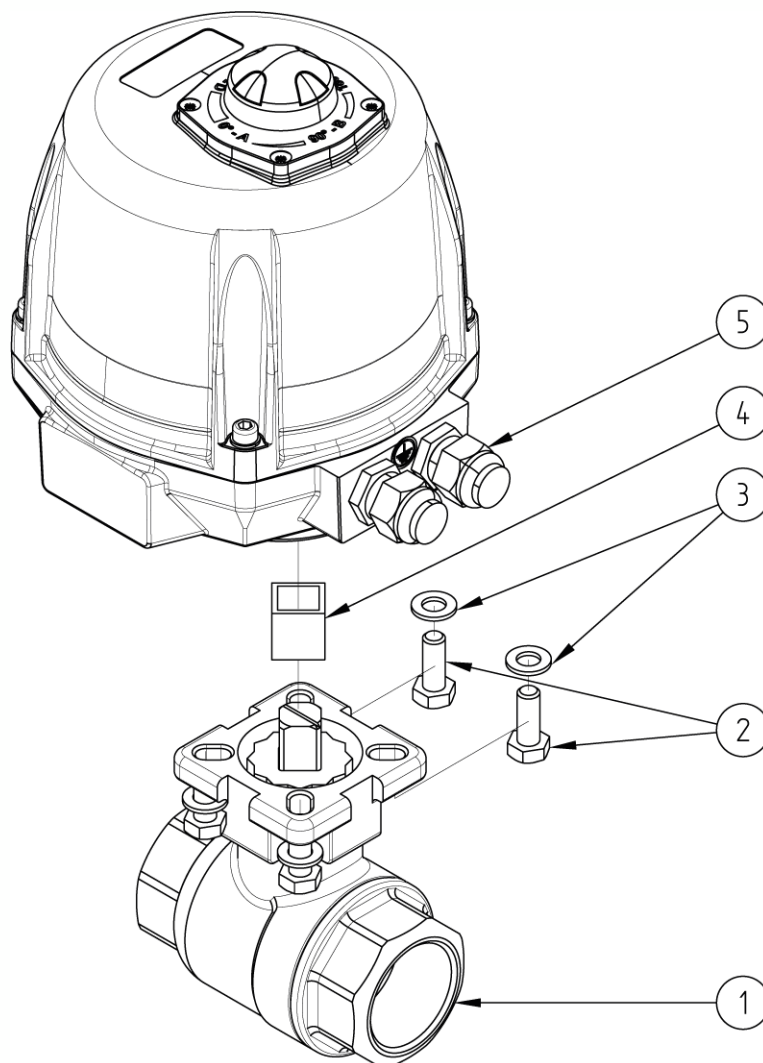
Configurable limit switches. Torque limiting device. Anti-condensation heater.

Actuator operating temperature: -20°C to +70°C.

Duty cycle: 50%. Number of starts per hour: 150.

Actuator sized for a valve $\Delta P = \max$. 16 bar. For $\Delta P > 16$ bar, please contact us.

Positioner version: The integrated positioning unit makes it possible to control the valve (opening/closing regulation) with a 4-20mA (or 0/10V) signal.



N°	Part Name	Material	Quantity
1	2-PART VALVE (58308)	CF8M	1
2	FIXING BOLT	STAINLESS STEEL	4
3	WASHER	STAINLESS STEEL	4
4	COUPLING	STAINLESS STEEL	0 or 1
5	ELECTRIC ACTUATOR (50846)	ALUMINIUM/PLASTIC	1

You can refer to the following product data sheets for more technical information:

- **58308** : 2-part female/female valve
- **50846** : 1/4 turn (90°) electric actuator with 4/20mA positioning unit - IP68

Béné Inox – 11 chemin de la Pierre Blanche – 69800 SAINT-PRIEST – S.A.S with 240 000 € share capital – SIREN N° 311 810 287
Tel. N°: +33 (0)4 78 90 48 22 – Fax N°: +33 (0)4 78 90 69 59 – www.bene-inox.com – bene@bene-inox.com

Technical information, illustrations and photographs are provided for information only, they are not contractual. Some may vary according to the tolerances accepted in the profession and the applicable standards. All instructions for use, disassembly and maintenance are recommendations only. These could also vary depending on product usage conditions, its installation environment and purchaser requirements – of which the purchaser alone is responsible for their definition.